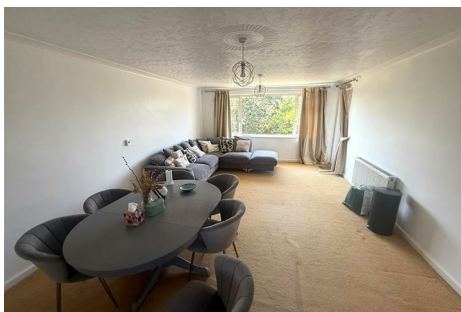


# RAINBOW REID



ESTATE AGENTS || LETTING AGENTS || PROPERTY MANAGEMENT



## 5, Graham Court Eastcote Lane Northolt, London, UB5 4HT

Located on a quiet side street is this extremely spacious (789SQFT), second floor, two double bedroom apartment that is ready to let immediately. The property in full comprises, entrance hall, spacious lounge/diner with access to a private balcony, kitchen, bathroom and two double bedrooms.

Externally the property features beautifully maintained communal gardens which are overlooked by the balcony space. There is also unrestricted parking outside the building (not allocated) which is available on a first come first serve basis.

Location:  
Stations are within walking distance, Northolt and South Ruislip Central line Stations are both 0.7 miles. Northolt Park Station is 1 mile away, Northolt Park Overground Station. Northolt Park is served by Chiltern Railways (21 minutes to Marylebone Station).

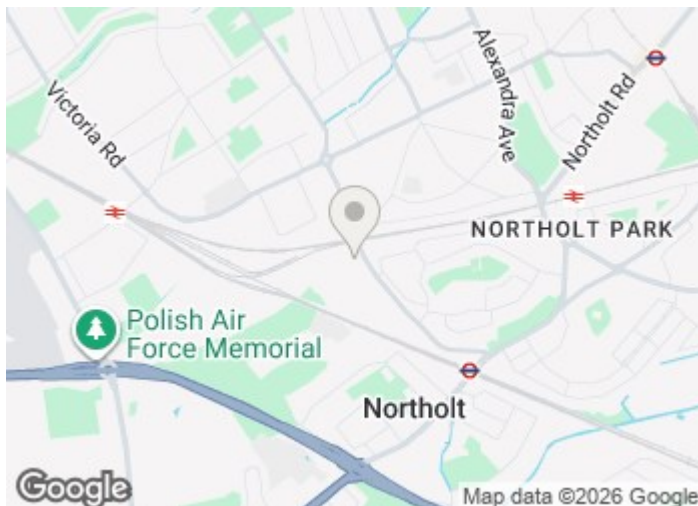
**£1,650 Per Month**

# 5, Graham Court Eastcote Lane

Northolt, London, UB5 4HT



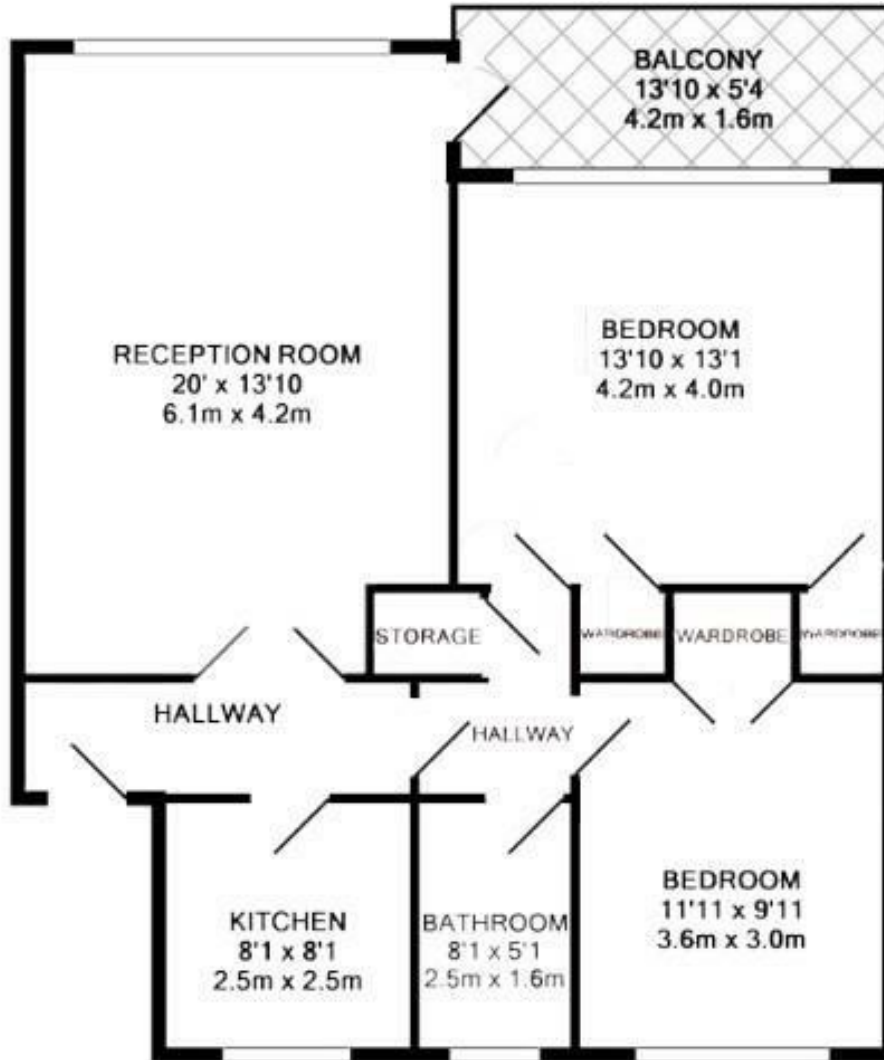
- EXTREMELY SPACIOUS (789SQFT)
- SPACIOUS LIVING/DINING AREA WITH BALCONY
- UNRESTRICTED PARKING (NOT ALLOCATED)
- SECOND FLOOR
- SEPERATE KITCHEN
- EXCELLENT LOCAL AMENITIES
- TWO DOUBLE BEDROOMS
- MODERN BATHROOM
- CLOSE TO PUBLIC TRANSPORT LINKS



## Directions



# Floor Plan



TOTAL APPROX. FLOOR AREA 789 SQ.FT. (73.3 SQ.M.)

These particulars, whilst believed to be accurate are set out as a general outline only for guidance and do not constitute any part of an offer or contract. Intending purchasers should not rely on them as statements of representation of fact, but must satisfy themselves by inspection or otherwise as to their accuracy. No person in this firm's employment has the authority to make or give any representation or warranty in respect of the property.

