

whiteley helyar



1,196 ft²



3 bedrooms



bathroom



permit parking

Guide Price £425,000

Garden Maisonette, 47 New King Street, Bath, BA1 2BN

An elegant garden maisonette forming part of this Grade II Listed Georgian townhouse positioned in this centrally located yet peaceful road in the heart of the city centre. This well presented property offers spacious and versatile accommodation and retains a number of delightful period features such as high ceilings, sash windows and period fireplaces. Chain free.

EXTERNALLY

The property offers a private low maintenance garden to the rear perfect for entertaining and alfresco dining planted with an array of bushes, shrubs and trees.

ACCOMMODATION

entrance hall
impressive sitting room
kitchen dining room
ground floor cloakroom

utility room
three bedrooms
bathroom
gas fired heating

LOCATION

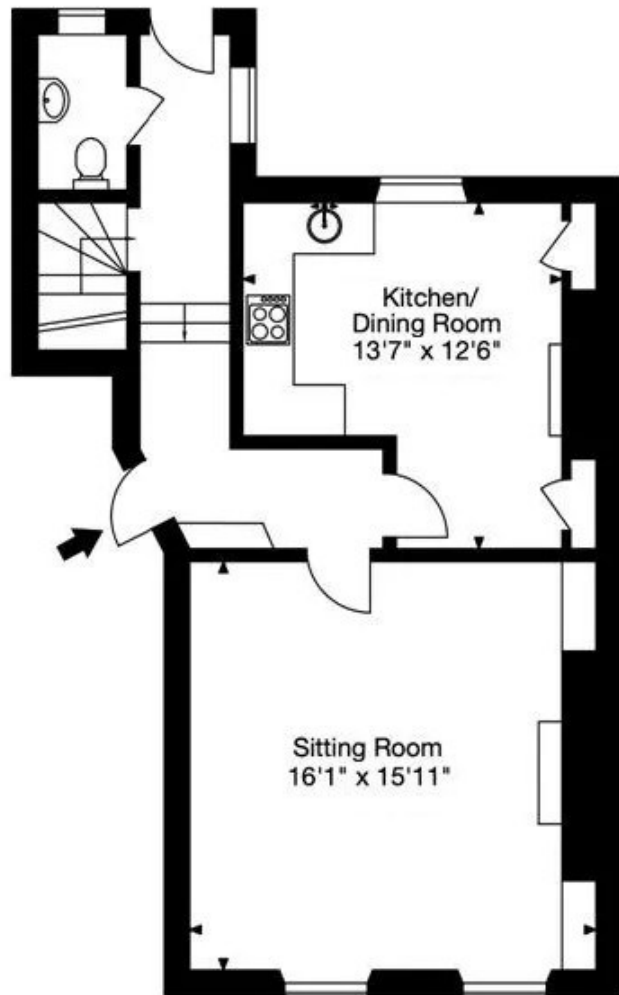
New King Street occupies a convenient and popular position close to Sainsbury's supermarket and within easy strolling distance of the shops, amenities and Railway station in Bath. The property is also ideally placed for access to the river and Bristol and Bath Cycle Path affording easy access to the countryside.



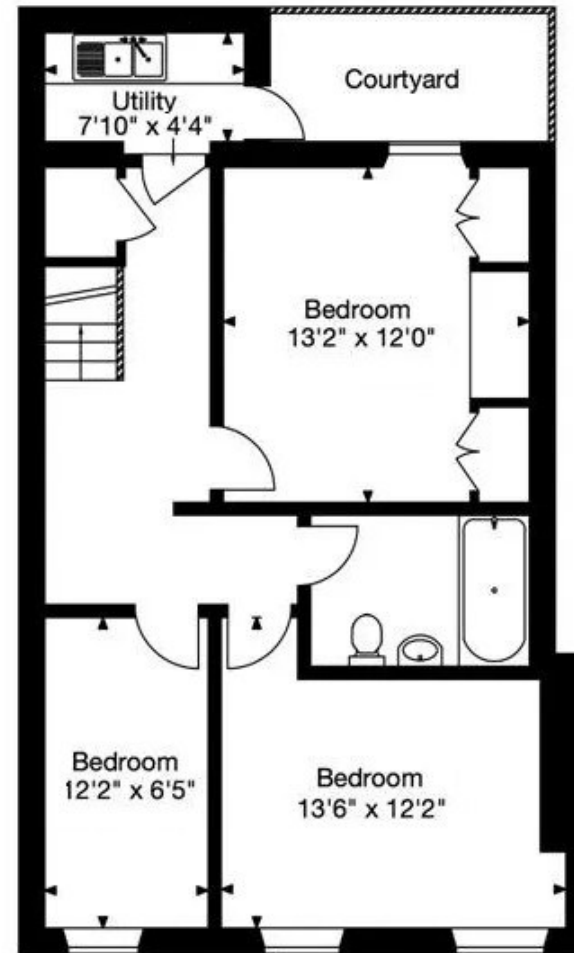


Approx. Gross Internal Area 1196 Sq Ft - 111 Sq M

Whilst every attempt has been made to ensure the accuracy of the floorplan contained here, measurements of doors, windows, rooms and any other items are approximate and no responsibility is taken for any error, omission or mis-statement. This plan is purely for illustrative purposes only and should be used as such by any prospective purchaser.



Ground Floor



Garden Floor



Tenure: Share of Freehold
Term: Residue of a 999 year lease
Service Charge: £300.00 per month
Council Tax: 'C' = £1,968.48

Energy Efficiency Rating		Current	Potential
Very energy efficient - lower running costs			
(92+)	A		
(81-91)	B		
(69-80)	C		77
(54-68)	D	59	
(39-54)	E		
(21-38)	F		
(1-20)	G		
Not energy efficient - higher running costs			
England & Wales		EU Directive 2002/91/EC	