



Westcliff Park Drive , Westcliff-On-Sea SS0 9LN

- Three spacious bedrooms
- Charming mid-terrace house
 - Close to London Road
- In need of modernisation throughout
 - Located in Westcliff-On-Sea
- Two cosy reception rooms
 - Lovely rear garden
 - Near local amenities
 - Great potential
 - No Onward chain

£300,000 Freehold





Location

Hall

Lounge
16'6 x 11'6



Dining room
15'3 x 10'3

Kitchen
13'5 x 6'7

Landing

Bedroom 1
16'3 x 10'6

Bedroom 2
13'6 x 10'5



Bedroom 3
9'9 x 6'6

Bathroom



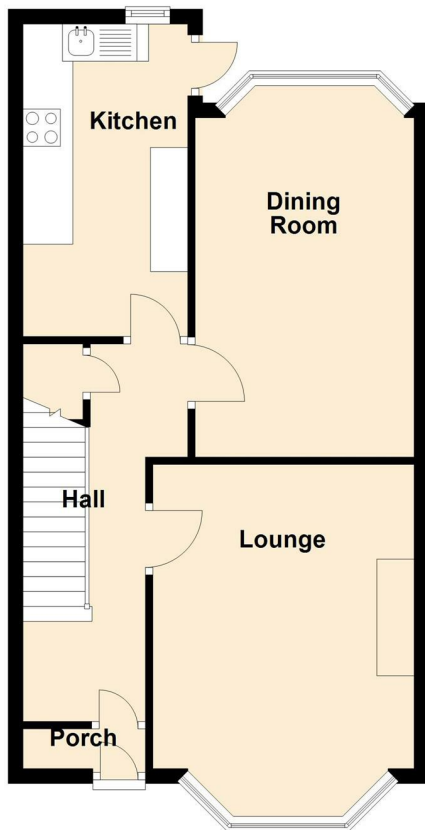


Local Authority
Council Tax Band D
EPC Rating



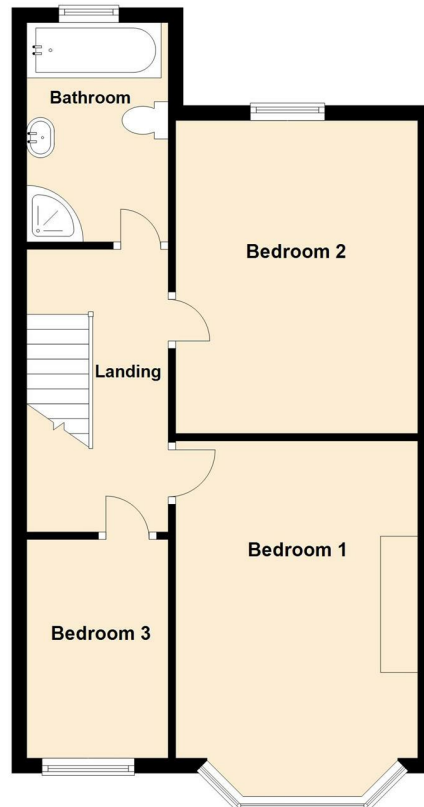
Ground Floor

Approx. 49.4 sq. metres (531.8 sq. feet)



First Floor

Approx. 47.8 sq. metres (514.5 sq. feet)



Total area: approx. 97.2 sq. metres (1046.3 sq. feet)

Sales Office

190 London Road, Southend-On-Sea,
Essex, SS1 1PJ

Contact

01702 34 11 77

<https://hairandson.co.uk/>

Agents Note: Whilst every care has been taken to prepare these particulars, they are for guidance purposes only. All measurements are approximate and for general guidance purposes only and whilst every care has been taken to ensure accuracy, they should not be relied upon and potential buyers/tenants are advised to recheck the measurements.