



Tweed Street, New Lubbethorpe, LE19 4BH

**ANDREW
GRANGER & CO**

Part of
**SHELDON
BOSLEY
KNIGHT** LAND AND
PROPERTY
PROFESSIONALS

Property Description

*** PART EXCHANGE ***



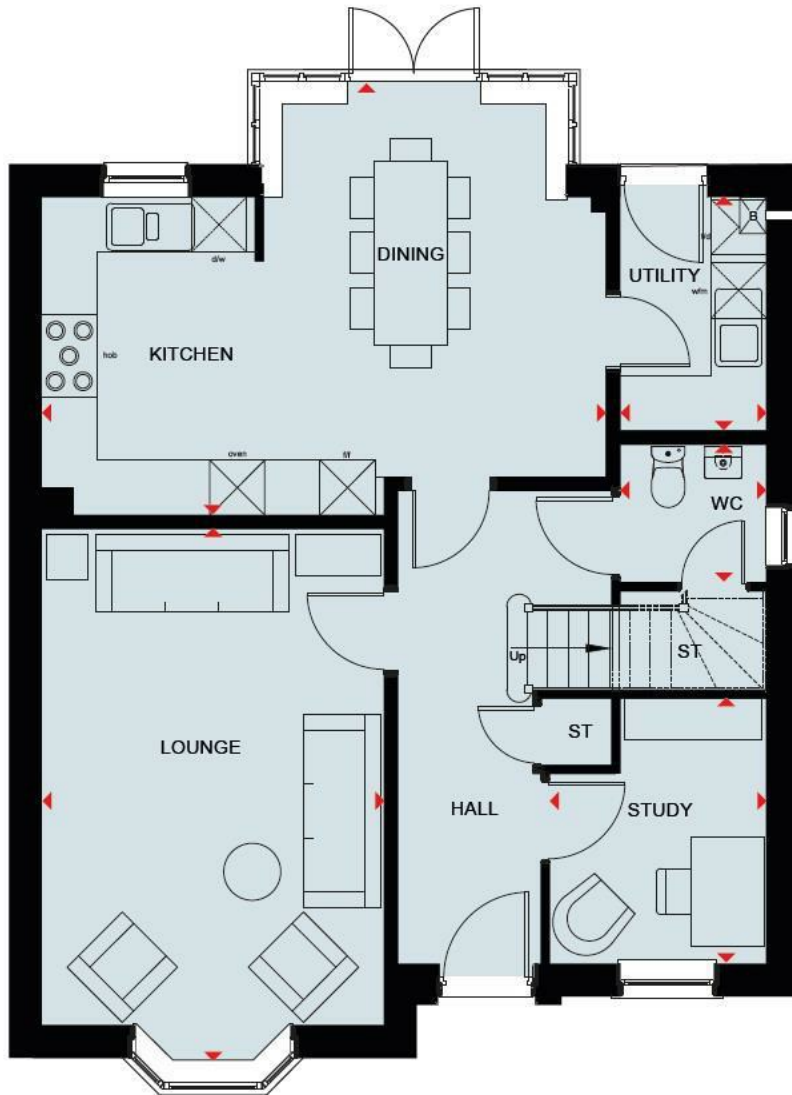


Key Features

- PART EXCHANGE
- Four bedroom detached family home
- Garage and driveway parking
- Spacious kitchen-diner with French doors
- Large family bathroom

£559,995





EPC Rating -

Tenure - Freehold

Council Tax Band - New Build

Local Authority

DISCLAIMER

All fixtures and fittings mentioned in these particulars are included in the sale, all others in the property are specifically excluded. Photographs are reproduced for general information and it must not be inferred that any item is included for sale with the property. These particulars are thought to be materially correct. Their accuracy is not guaranteed and they do not form part of any contract.

We routinely refer clients to both our recommended Legal Firm and a panel of Financial Services Providers. It is your decision whether you choose to deal with these companies. In making that decision, you should know that we receive a referral fee

THE SKYLARKS

EAST LEAKE



The Skylarks, Rempstone Road, East Leake, Loughborough, LE12 6PW
2, 3, 4 and 5 bedroom homes

- **The Wilford**
2 bedroom home
- **The Archford**
3 bedroom home
- **The Hadley**
3 bedroom home
- **The Conington**
3 bedroom home
- **The Bardan**
3 bedroom home
- **The Abbeydale**
3 bedroom home
- **The Falway**
3 bedroom home
- **The Kennell**
3 bedroom home
- **The Ingiby**
4 bedroom home
- **The Herford**
4 bedroom home
- **The Winstone**
4 bedroom home
- **The Avondale**
4 bedroom home
- **The Layton**
4 bedroom home
- **The Holden**
4 bedroom home
- **The Lichfield**
5 bedroom home
- **The Henley**
5 bedroom home

- **Affordable Housing**

- MS** Marketing Suite
- SH** Show Home

- SCP** Bin Collection Point
- S/S** Substation
- BS** Bins Store
- V** Visitor Parking Space



- Wildlife Protected Area**
- Balancing Pond**
- Woodland Area**
- Trees**
- Hibernacula**
- Wildflower Meadow**
- Mature Tree Lines**
- Gravel Paths**

Giving nature a home on this development

- Wooden Hedgemoor Nest Box**
- Swift Brick Sparrow Terrace Instock Eco Habitat**
- Bird Box**
- Bat Box**
- Hedgemoor Highway**
- Beehive Habitat**

Profiling of our sustainability features are subject to change. Speak to sales before visiting.

See the Difference at dwh.co.uk

To view this property please contact our New Homes (Leicestershire) office on 0116 3087740

DAVID WILSON HOMES
WHERE QUALITY MEETS AFFORDABILITY
Part of

ANDREW GRANGER & CO
LAND AND PROPERTY PROFESSIONALS

SHELDON BOSLEY KNIGHT
LAND AND PROPERTY PROFESSIONALS

These images are for illustrative purposes only and are not intended to form part of any contract or warranty unless specifically incorporated in writing. Development layouts including house plans and landscaping are subject to change including any changes required due to a change in planning permission. The Skylarks is a marketing name only and may not be the designated postal address, which may be determined by The Post Office.

H6112/021/01 Rev 2