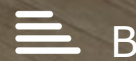




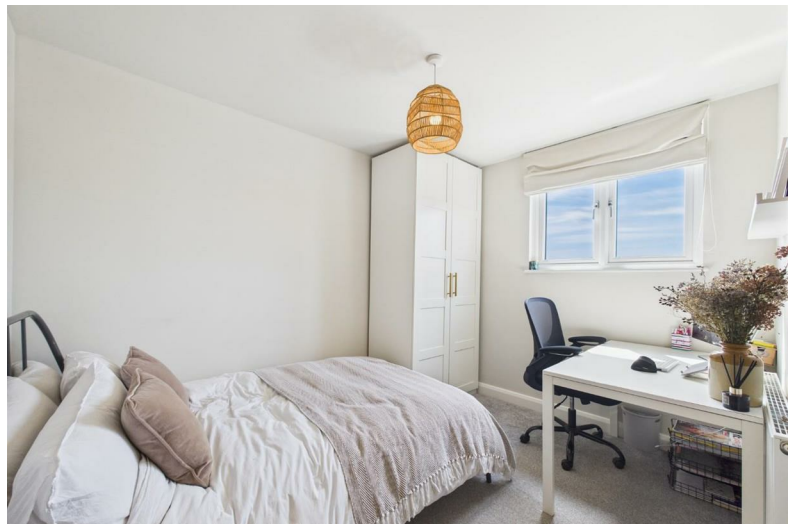
Flat 9, Lacie Court Gilbert Road

Redfield, Bristol, BS5 9FN

Asking price **£285,000**



Flat 9, Lacie Court Gilbert Road



Description

Welcome to this well-presented 2 bedroom second floor apartment set in a contemporary development and only a stones throw away from Redfield's vibrant Church Road with all the shops, cafes and amenities it has to offer. With an allocated parking space, St. George Park within walking distance and good transport links into the city, this property is an ideal first time buy.

Comprising of entrance hallway leading to a spacious open plan living area / kitchen diner offering a modern and contemporary style of living. The property features a large master bedroom, a second double bedroom and a modern bathroom.

Further benefits include an allocated parking space, bike storage, double glazing and gas central heating from a combination boiler. Don't miss out on the opportunity to make this gem your own, call now to book a viewing!!

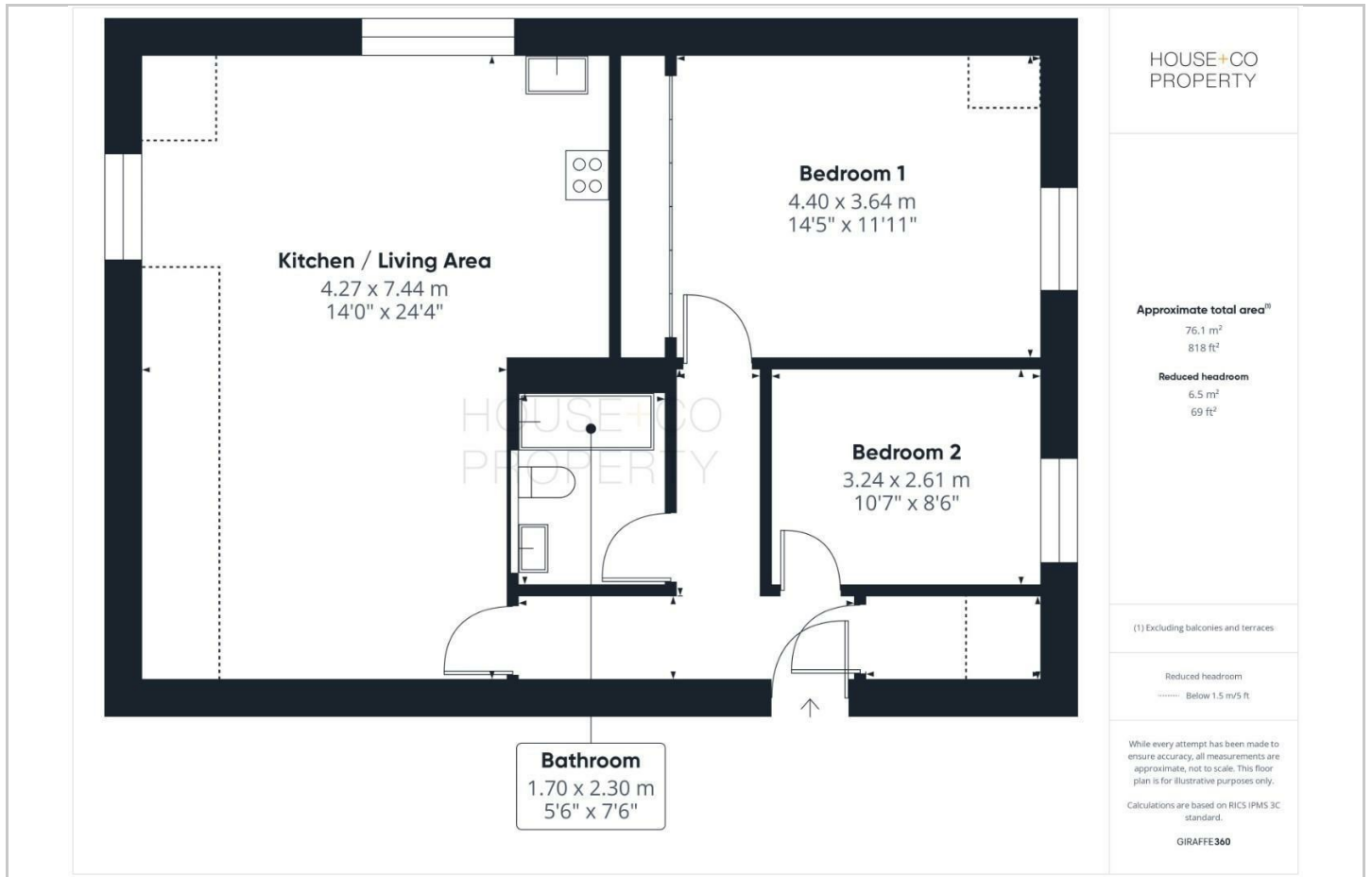
993 years remaining on the lease. No ground rent and a monthly service charge of £148.51.

- SECOND FLOOR FLAT
- ALLOCATED PARKING
- CLOSE TO ST. GEORGE PARK
- NEAR CHURCH ROAD
- BIKE STORE
- TWO DOUBLE BEDROOMS
- OPEN PLAN LIVING
- MODERN KITCHEN
- MODERN BATHROOM
- GAS CENTRAL HEATING AND DOUBLE GLAZING





Floor Plan



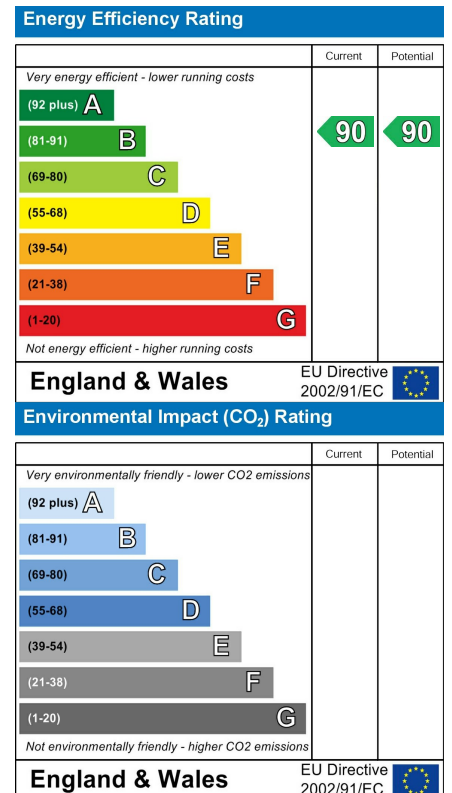
Area Map



Viewing

Please contact our House + Co Property (Sales) Office on 0117 907 0020 if you wish to arrange a viewing appointment for this property or require further information.

Energy Efficiency Graph



These particulars, whilst believed to be accurate are set out as a general outline only for guidance and do not constitute any part of an offer or contract. Intending purchasers should not rely on them as statements of representation of fact, but must satisfy themselves by inspection or otherwise as to their accuracy. No person in this firm's employment has the authority to make or give any representation or warranty in respect of the property.