

Chancellors Street, W6

£520,000

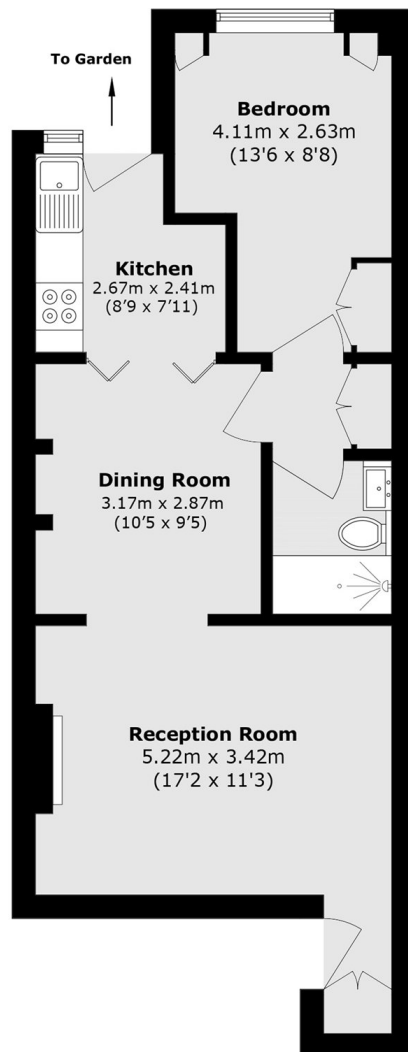
This large share of freehold one bedroom flat is excellently located close to Hammersmith Broadway and the River Thames. The flat benefits from having its own private entrance, wood flooring, sash windows and offers a wonderful open plan kitchen/living space leading onto a private rear garden.

Chancellors Street is a popular road close to the River Thames tow path and a short walk from Hammersmith Broadway. It is closely located to the riverside which offers popular restaurants and pubs.

Features

- One Bedroom
- Private Entrance
- Period Detail
- Share Of Freehold
- Private Garden
- Riverside Location

Chancellors Street, London, W6



Total area (approx.): 48.3 sq. m (519.9 sq. ft)