



Jordan fishwick

Buxton Road Furness Vale High Peak



Buxton Road Furness Vale High Peak SK23 7PX

£230,000



The Property

Located in the popular village of Furness Vale, with direct rail to Manchester Piccadilly, a stone built two bedroom end of terrace. Pleasant views to the rear, well presented accommodation throughout and comprising: vestibule, living room with wood burning stove, dining room, kitchen, two generous sized first floor bedrooms and a bathroom with white suite, loft room with pull down ladder and Velux window. Enclosed flagged garden with shed, pvc double glazing and gas central heating. Viewing essential.



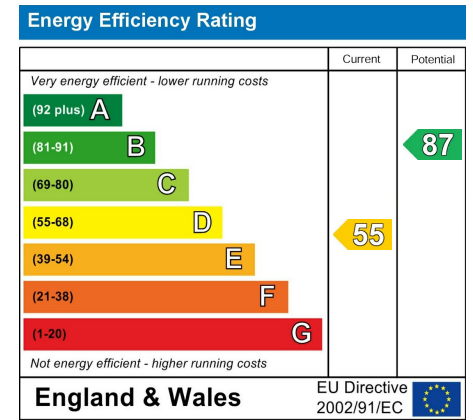
- Stone End Terrace Property with Lovely Open Views to Rear
- Two Reception Rooms
- Living Room with Inglenook Fireplace and Wood Burning Stove
- Two Good Sized Bedrooms
- Bathroom with White Suite
- Low Maintenance Rear Garden Adjoining Farmland
- Loft Room with Velux Window and Pull Down Ladder

Postcode SK23 7PX

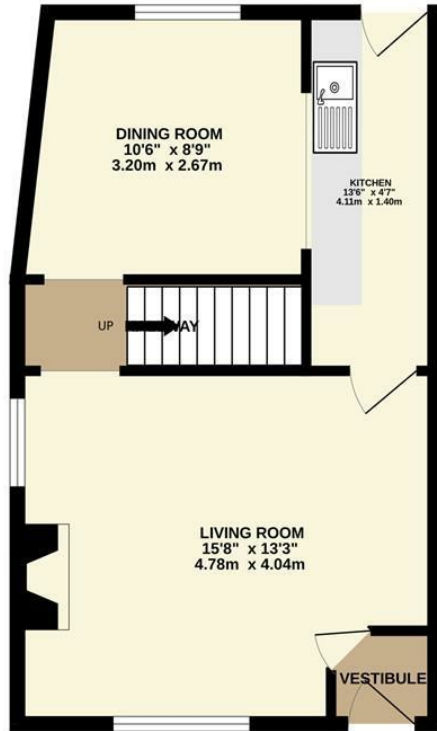
EPC Rating D

Local Authority High Peak

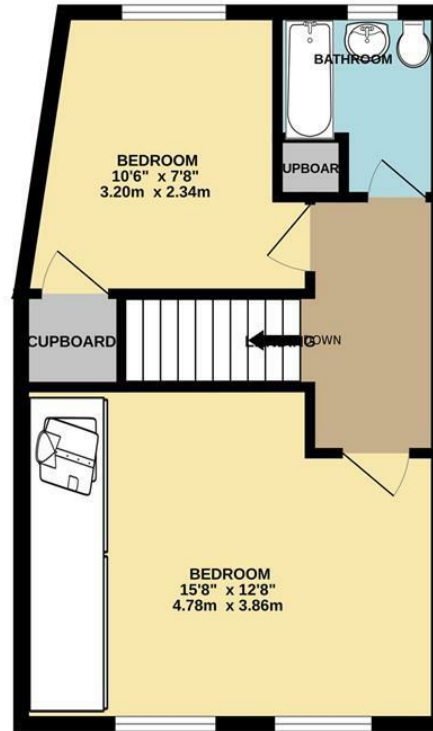
Council Tax B



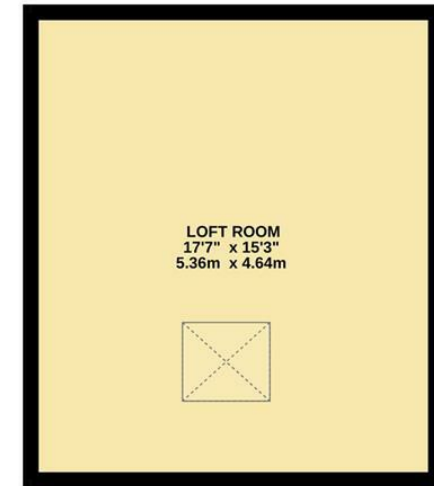
GROUND FLOOR
407 sq.ft. (37.8 sq.m.) approx.



1ST FLOOR
411 sq.ft. (38.2 sq.m.) approx.



2ND FLOOR
267 sq.ft. (24.8 sq.m.) approx.



TOTAL FLOOR AREA : 1085 sq.ft. (100.8 sq.m.) approx.

Whilst every attempt has been made to ensure the accuracy of the floorplan contained here, measurements of doors, windows, rooms and any other items are approximate and no responsibility is taken for any error, omission or mis-statement. This plan is for illustrative purposes only and should be used as such by any prospective purchaser. The services, systems and appliances shown have not been tested and no guarantee as to their operability or efficiency can be given.
Made with Metropix ©2026



These particulars are believed to be accurate but they are not guaranteed and do not form a contract. Neither Jordan Fishwick nor the vendor or lessor accept any responsibility in respect of these particulars, which are not intended to be statements or representations of fact and any intending purchaser or lessee must satisfy himself by inspection or otherwise as to the correctness of each of the statements contained in these particulars. Any floorplans on this brochure are for illustrative purposes only and are not necessarily to scale.

Offices at: Chorlton, Didsbury, Disley, Hale, Glossop, Macclesfield, Manchester Deansgate, Manchester Whitworth Street, New Mills, Sale, Wilmslow and Withington

14 Market St, Disley, Cheshire, Stockport SK12 2AA

01663 767878

disley@jordanfishwick.co.uk

www.jordanfishwick.co.uk