



45 Hallam Grange Close, Fulwood, Sheffield, S10 4BN

Saxton Mee

45 Hallam Grange Close

Fulwood

Guide Price

£170,000

GUIDE PRICE £170,000-£180,000

A FANTASTIC PROPERTY OFFERED FOR SALE WITH NO ONWARD CHAIN

Situated in the highly desirable area of Fulwood, this bright and spacious two-bedroom first-floor apartment offers well-maintained accommodation in a fantastic location.

The property boasts a fitted kitchen, a generously sized bathroom complete with an electric shower over the bath and two well-proportioned double bedrooms. The light-filled living space creates a welcoming atmosphere, while gas central heating throughout ensures year-round comfort.

Externally, the development benefits from communal parking for both residents and visitors. Ideally positioned close to excellent local amenities, transport links, hospitals and universities, the apartment offers both convenience and accessibility. With delightful communal gardens wrapping round the development and easy access out towards the countryside and the Mayfield Valley.

Perfect for first-time buyers, investors, or those looking to downsize, this attractive home provides a wonderful opportunity to move straight in while still offering scope to personalise over time.

Early viewing is highly recommended to fully appreciate all that this property has to offer!

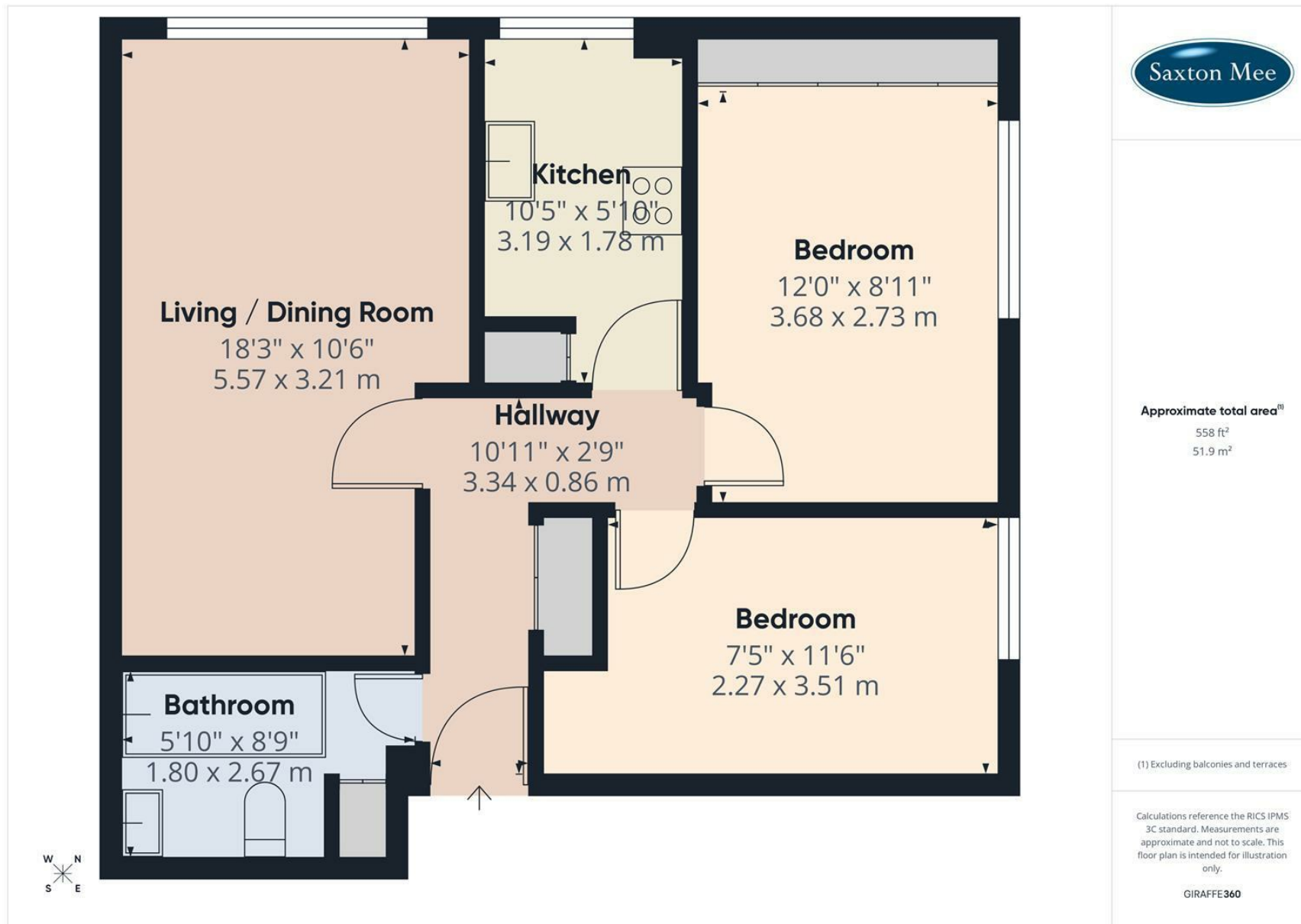
Leasehold. 141 years remaining.
Ground Rent £25p/a
Service Charge Approx. £1100p/a



- Spacious two-bedroom first floor apartment in sought-after Fulwood
- Light and airy living accommodation throughout
- Two well-proportioned double bedrooms
- Fitted kitchen with electric appliances and generous size bathroom with 3 piece suite including an electric shower over the bath
- Gas central heating
- In good condition throughout
- Communal parking available
- Close to excellent amenities, transport links and open countryside
- Located close to Sheffield Universities and Hospitals
- Viewings Via Saxton Mee Banner Cross







While we endeavour to make our sales particulars fair, accurate and reliable, they are only a general guide to the property and, accordingly, if there is any point, which is of particular importance to you, please contact the relevant office. The Agents have not tested any apparatus, equipment, fittings or services and so cannot verify they are in working order. The buyer is advised to obtain verification. Please note all the measurement details are approximate and should not be relied upon as exact. All plans, floor plans and maps are for guidance purposes only and are not to scale. Under no circumstances should they be relied upon as exact or for use in planning carpets and other such fixtures, fittings or furnishings. YOUR HOME IS AT RISK IF YOU DO NOT KEEP UP REPAYMENTS ON A MORTGAGE OR OTHER LOAN SECURED ON IT. 'A Life Assurance policy may be requested.' 'Written Quotations of credit terms available on request.'

Banner Cross
T: 0114 268 3241
E: bannercross@saxtonmee.co.uk
www.saxtonmee.co.uk

Hathersage
T: 01433 650009
E: hathersage@saxtonmee.co.uk

Bakewell
T: 01629 815307
E: bakewell@saxtonmee.co.uk

Matlock
T: 01629 828250
E: matlock@saxtonmee.co.uk

