



Brancaster Drive, Mill Hill, NW7 2SJ

£2,300 Per Calendar Month

Council Tax Band F

REAL ESTATES
Est.1981

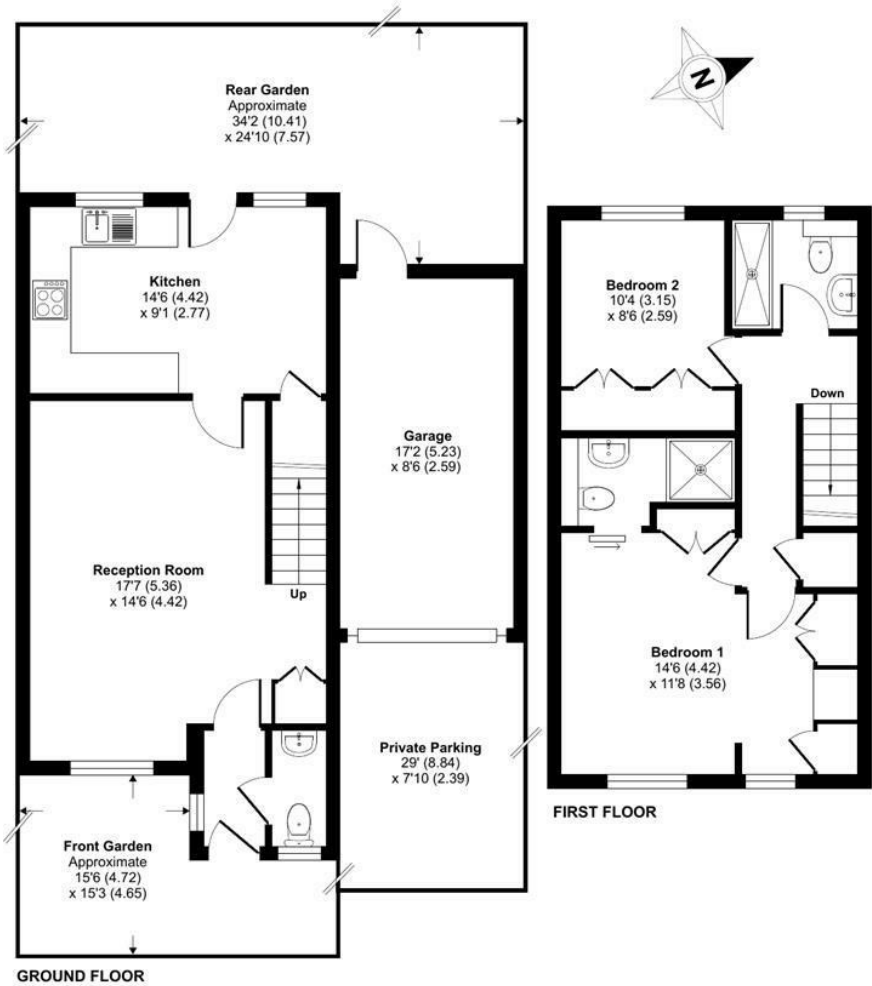
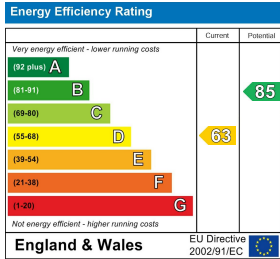
Estate Agents · Residential Sales · Investments · Lettings

AVAILABLE 16TH FEBRUARY Real Estates are delighted to bring to the market this 2 BEDROOM 2 BATHROOM semi-detached house, located in a popular and quiet residential development off Page Street.

This lovely home has been refurbished to a high standard and comprises a spacious and bright living room, separate fully fitted kitchen, 2 double bedrooms (1 with en-suite shower room), family bathroom and guest cloakroom. Well maintained rear garden, garage and off street parking for 1 car. **PROPERTY IS FURNISHED.**

Brancaster Drive, London, NW7

Approximate Area = 813 sq ft / 75.5 sq m
Garage = 146 sq ft / 13.5 sq m
Total = 959 sq ft / 89 sq m
For identification only - Not to scale



Floor plan produced in accordance with RICS Property Measurement Standards incorporating International Property Measurement Standards (IPMS2 Residential). © nichecom 2024. Produced for Real Estates. REF: 1124699