



Apartment

# WADBROOK STREET, KINGSTON KT1 1HS

PCM

# £2,250 PCM

## FEATURES

- 24 hour concierge
- En-suite and additional bathroom
- Residents Gymnasium
- Two double bedrooms
- Riverside development
- Allocated parking space
- Direct access onto patio terrace



# 2 Bedroom Apartment located in Kingston

Riverside living with direct access onto patio terrace overlooking the River Thames.

This rarely available ground floor apartment benefits from 24 hour concierge, residents gym and secure parking for 1 car.

Perfectly located for all the amenities Kingston has to offer, the property comprises two double bedrooms, spacious lounge, modern kitchen, en-suite, main bathroom and terrace.

C-tax band F. Deposit: 5 weeks

Holding fee 1 week (Will be deducted from the first month rent)

Call us on

020 8546 7771

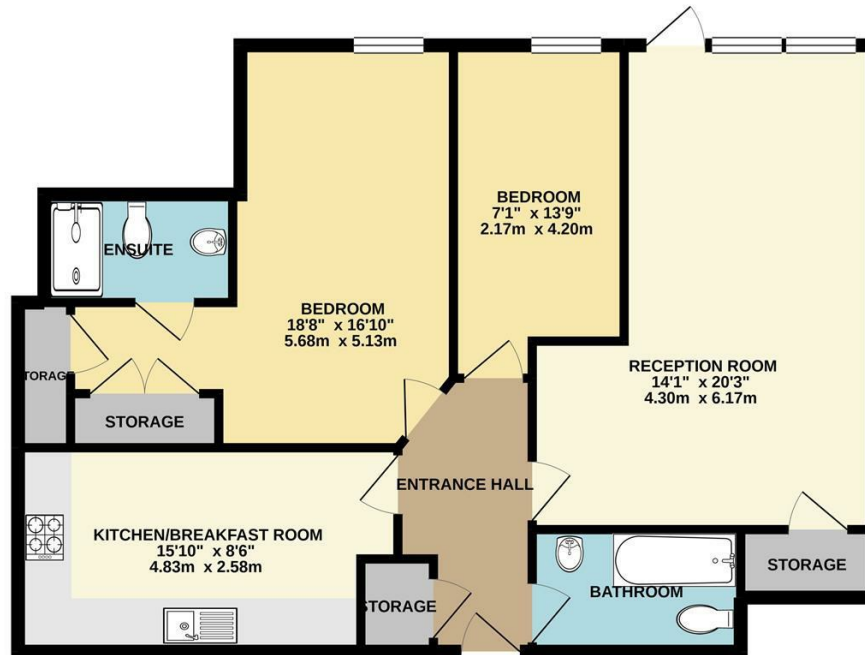
info@saxonkings.co.uk

www.saxonkings.co.uk

Council Tax Band

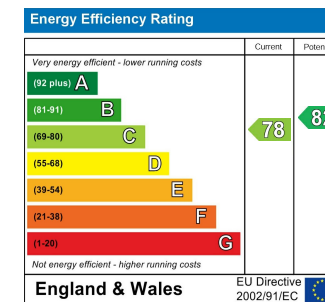
F

GROUND FLOOR  
858 sq.ft. (79.7 sq.m.) approx.



TOTAL FLOOR AREA: 858 sq.ft. (79.7 sq.m.) approx.

Whilst every attempt has been made to ensure the accuracy of the floorplan contained here, measurements of doors, windows, rooms and any other items are approximate and no responsibility is taken for any error, omission or mis-statement. This plan is for illustrative purposes only and should be used as such by any prospective purchaser. The services, systems and appliances shown have not been tested and no guarantee as to their operability or efficiency can be given.  
Made with Metropix ©2021



Agents Note: Whilst every care has been taken to prepare these particulars, they are for guidance purposes only. All measurements are approximate and are for general guidance purposes only and whilst every care has been taken to ensure their accuracy, they should not be relied upon and potential buyers are advised to recheck the measurements.

