









A spacious three bedroom semi-detached home, available with immediate vacant possession and no upper chain involved, within this ever popular area. Internally the accommodation on the ground floor includes an entrance porch, hall with staircase to the first floor, a lounge, separate dining room and a kitchen. On the first floor there is a bathroom/wc and there are three bedrooms, one with a fixed staircase leading up to a fabulous loft space. Externally there is a block-paved driveway to the front and an attractive, low maintenance garden to the rear. The property benefits from a useful outhouse area, incorporating a utility area, double glazed windows, gas central heating to radiators and the benefit of solar panels (we have been informed by our client that these are owned and not leased). This convenient location is close to local amenities, shops and schools as well as offering transport links to surrounding areas. Early viewing is essential to avoid disappointment.

MAIN ROOMS AND DIMENSIONS

Ground Floor

Entrance Porch

Inner UPVC door to the reception hall.

Reception Hall



Stairs to the first floor with storage under, radiator and open archway into the kitchen.

Lounge 12'5" x 12'10"



Double glazed bay window to the front and radiator.

Dining Room 13'0" x 12'10"



UPVC double glazed sliding patio door to the rear, feature fireplace and radiator.

Kitchen 8'10" x 6'7"



Range of wall and base units with countertops over incorporating 1 1/2 bowl sink and drainer unit with mixer tap. Space for cooker and washing machine, double glazed window to rear, single glazed window and UPVC door to the outhouse.

Outhouse 14'7" x 7'1"



Double glazed window, storage cupboard and radiator. UPVC doors to front and rear. Open plan into the utility.

Utility 9'1" x 6'7"



Base units with countertops over providing space for additional kitchen appliances. Double glazed window to front.

First Floor Landing



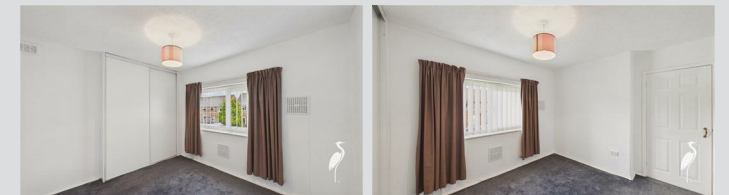
Window to the side.

Bedroom 1 14'1" x 10'11"



Double glazed window to the front, radiator, storage cupboard and built in sliding door wardrobes.

Bedroom 2 9'6" x 10'3"



Double glazed window to the rear, radiator, storage cupboard and built in sliding wardrobes.

Visit www.peterheron.co.uk or call 0191 510 3323

Tried. Trusted. Recommended. City Branch 20 Fawcett Street Sunderland SR1 1RH Fulwell Branch 15 Sea Road Fulwell Sunderland SR6 9BS

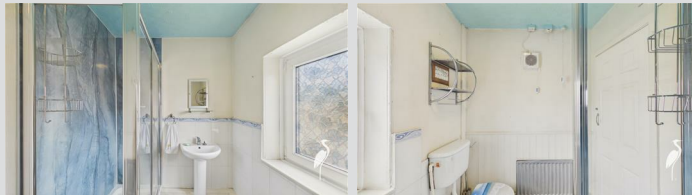
MAIN ROOMS AND DIMENSIONS

Bedroom 3 8'10" x 6'2"



Double glazed window to the front, radiator and stairs to the loft space.

Shower Room



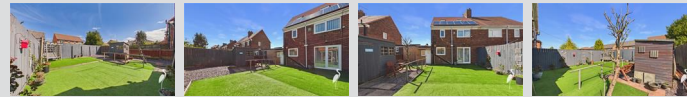
Low level WC, wash hand basin, shower cubicle, radiator and double glazed window.

Loft Space 14'4" x 6'9" plus 14'6" x 8'4"



Converted loft space with 2x Velux windows, 2x radiators and built in storage.

Outside



Garden to the front with block paved gated driveway proving off street parking. Generous, attractive rear garden with AstroTurf and gravelled areas featuring a shed.

Council Tax Band

The Council Tax Band is Band A.

Tenure Freehold

We are advised by the Vendors that the property is Freehold. Any prospective purchaser should clarify this with their Solicitor.

Important Notice - Particulars

Peter Heron Ltd for themselves and for the vendors of this property whose agents they are, give notice that:-
The particulars are set out for general guidance only for the intending Purchasers and do not constitute part of an offer or contract. Whilst we endeavour to make our sales particulars accurate and reliable, if there is anything of particular importance which you feel may influence your decision to purchase, please contact the office and we will be pleased to check the information. Do so particularly, if contemplating travelling some distance to view the property. All descriptions, dimensions, references to conditions and necessary permissions for use and occupation and other details are given in good faith, and are believed to be correct, however any intending purchasers should not rely on them that statements are representations of fact, but must satisfy themselves by inspection or otherwise as to the correctness of each of them. Independent property size verification is recommended.

Lease details, service charges and ground rent (where applicable) are given as a guide only and should be checked and confirmed by your Solicitor prior to exchange of

contracts. No person in the employment of Peter Heron Ltd has any authority to make or give any representation or warranty whatever in relation to this property or these particulars, nor to enter into any contract on behalf of Peter Heron Ltd, nor into any contract on behalf of the Vendor. The copyright of all details and photographs remain exclusive to Peter Heron Ltd.

Please note that in the event the purchaser uses the services of Peter Heron Conveyancing in the purchase of their home, Peter Heron Ltd will be paid a completion commission of £300.00 by Movewithus Ltd.

Fawcett Street Viewings

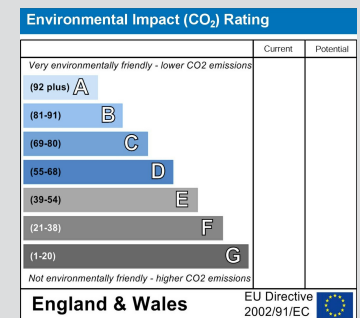
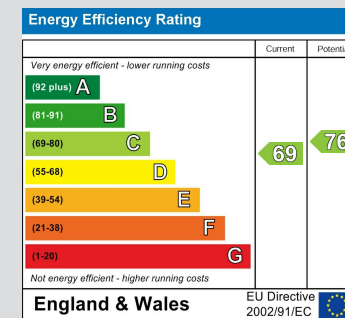
To arrange an appointment to view this property please contact our Fawcett Street branch on 0191 510 3323 or book viewing online at peterheron.co.uk

Opening Times

Monday to Friday 9.00am - 5.00pm Saturday 9.00am - 12noon

Ombudsman

Peter Heron Estate Agents are members of The Property Ombudsman and subscribe to The Property Ombudsman Code of Practice.



Visit www.peterheron.co.uk or call 0191 510 3323

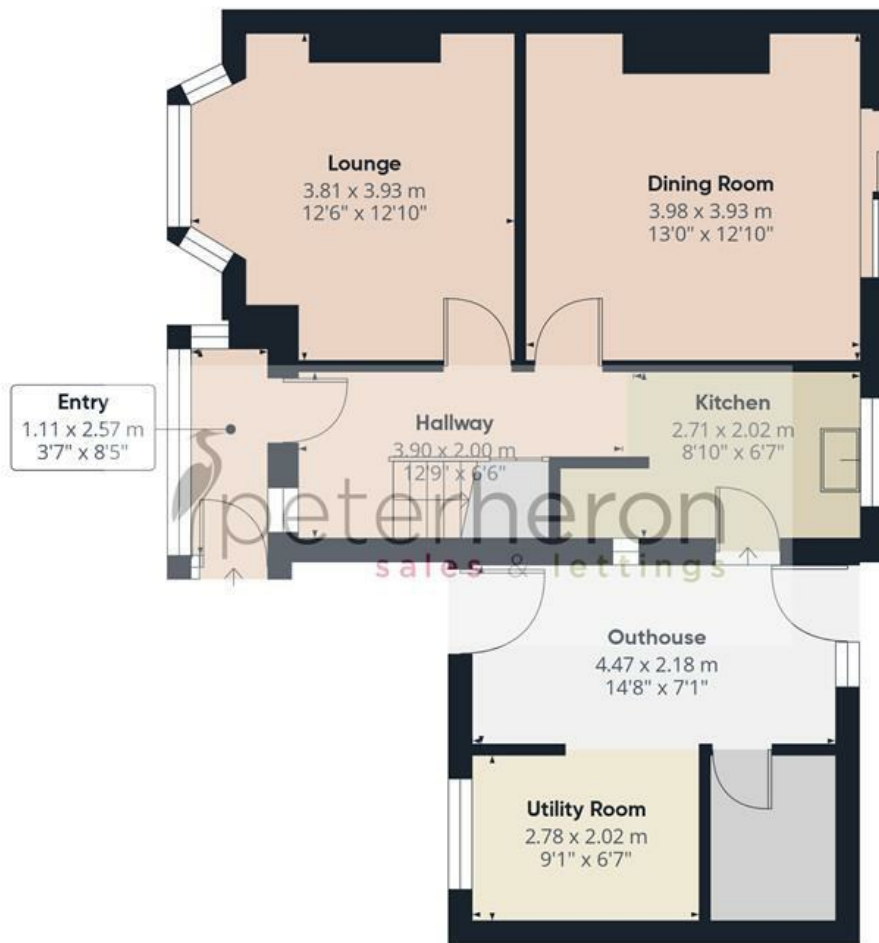
Tried. Trusted. Recommended. City Branch 20 Fawcett Street Sunderland SR1 1RH Fulwell Branch 15 Sea Road Fulwell Sunderland SR6 9BS

MAIN ROOMS AND DIMENSIONS



Visit www.peterheron.co.uk or call **0191 510 3323**

Tried. Trusted. Recommended. City Branch 20 Fawcett Street Sunderland SR1 1RH Fulwell Branch 15 Sea Road Fulwell Sunderland SR6 9BS



Ground Floor



First Floor



Second Floor



Approximate total area⁽¹⁾

118.6 m²

1274 ft²

Reduced headroom

4.7 m²

51 ft²

(1) Excluding balconies and terraces

Reduced headroom

..... Below 1.5 m/5 ft

Calculations reference the RICS IPMS 3C standard. Measurements are approximate and not to scale. This floor plan is intended for illustration only.