



**Rowe
& Co.**

104 Ashdown Road, Chandler's Ford

Eastleigh

In Excess of **£500,000**

**Rowe
& Co.**



104 Ashdown Road

Chandler's Ford, Eastleigh

Ideally situated in the highly desirable Hiltingbury area, this attractive four-bedroom detached family home falls within the catchment area for the highly regarded Thornden School. The well-presented accommodation comprises an entrance hall, cloakroom, spacious lounge, and an open-plan kitchen/dining room on the ground floor. Upstairs, there are four well-proportioned bedrooms served by a family bathroom. Externally, the property benefits from a driveway providing off-road parking, a garage, and a private, secluded rear garden, offering an ideal space for relaxation and outdoor entertaining. This is an excellent opportunity to acquire a family home in a popular residential location with access to excellent local amenities and schools.

LOCATION

Chandler's Ford is one of Hampshire's most desirable residential locations, offering an excellent blend of convenience, community and countryside living. The town provides a comprehensive range of shops, restaurants, cafés and traditional public houses, together with excellent leisure and recreational facilities. Residents benefit from an extensive network of picturesque footpaths and open green spaces, including the popular Hiltingbury Lakes and Hocombe Mead, ideal for walking, running and family activities. The area is perfectly positioned for access to both coast and countryside, with the breathtaking landscapes of the South Downs National Park and the New Forest National Park both within easy reach. Communications are excellent, with convenient access to the M3 and M27 motorways, while mainline rail services provide regular connections to London Waterloo, with journey times of approximately 57 minutes from Winchester and around 65 minutes from Southampton Airport Parkway.

Council Tax band: E - Tenure: Freehold



104 Ashdown Road

Chandler's Ford, Eastleigh

INSIDE

Upon entering the property, you are welcomed into an entrance hall with doors leading to all principal rooms, including the cloakroom, and stairs rising to the first floor. A door to one side opens into a spacious lounge, featuring windows to the front aspect and ample space for a variety of furniture arrangements.

The kitchen/dining room benefits from French doors opening onto the rear garden and is fitted with a range of wall and base units, incorporating cupboards and drawers with complementary worktops. The first floor comprises four well-proportioned bedrooms, all served by a spacious family bathroom.

OUTSIDE

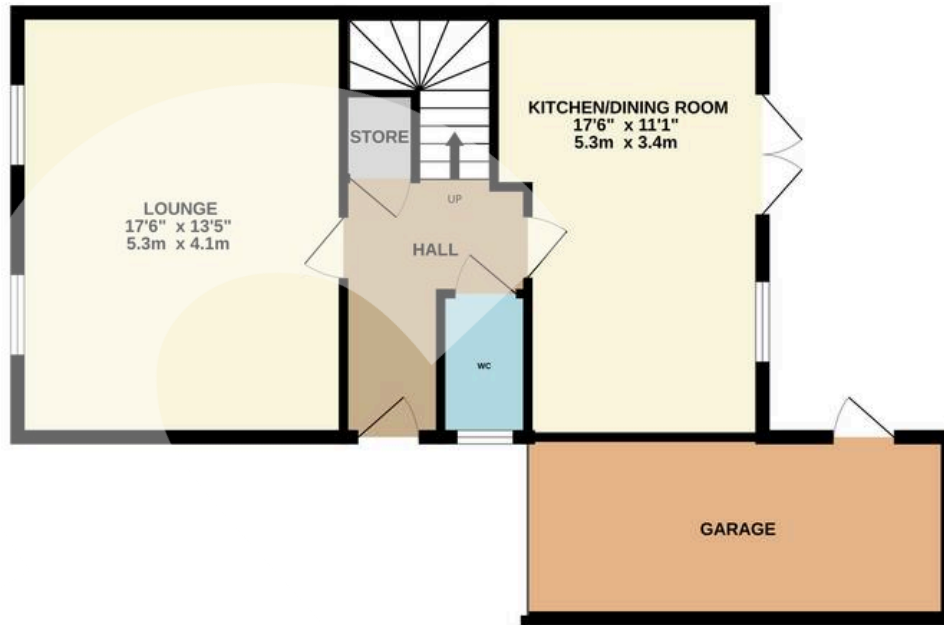
To the front of the property is a generous tandem driveway providing ample off-road parking for multiple vehicles, with gated side access and a garage accessed via an up-and-over door. A well-maintained lawn is complemented by a variety of mature shrubs and planting.

The private and secluded rear garden offers a paved patio area, perfect for outdoor dining and entertaining, alongside a lawned garden with an attractive selection of shrubs, flowers, and established borders.

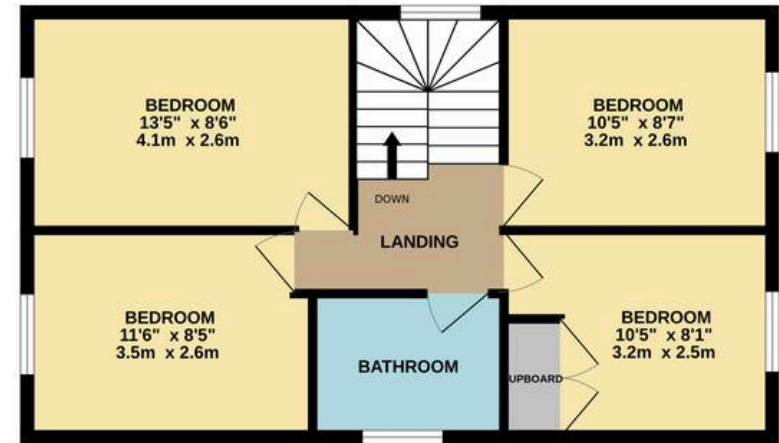
- Four Bedrooms
- Thornden School Catchment
- Kitchen / Dining Room
- Garage & Driveway
- Secluded Garden



GROUND FLOOR
667 sq.ft. (62.0 sq.m.) approx.



1ST FLOOR
538 sq.ft. (50.0 sq.m.) approx.



TOTAL FLOOR AREA : 1205 sq.ft. (112.0 sq.m.) approx.

Whilst every attempt has been made to ensure the accuracy of the floorplan contained here, measurements of doors, windows, rooms and any other items are approximate and no responsibility is taken for any error, omission or mis-statement. This plan is for illustrative purposes only and should be used as such by any prospective purchaser. The services, systems and appliances shown have not been tested and no guarantee as to their operability or efficiency can be given.
Made with Metropix ©2026

📍 1 Rufus Court, 103 Winchester Road
Chandlers Ford,
SO53 2GG

☎ 02381 102221

✉ chandlersford@rowehomes.co.uk