



# RIDGEWAY

## RESIDENTIAL SERVICES



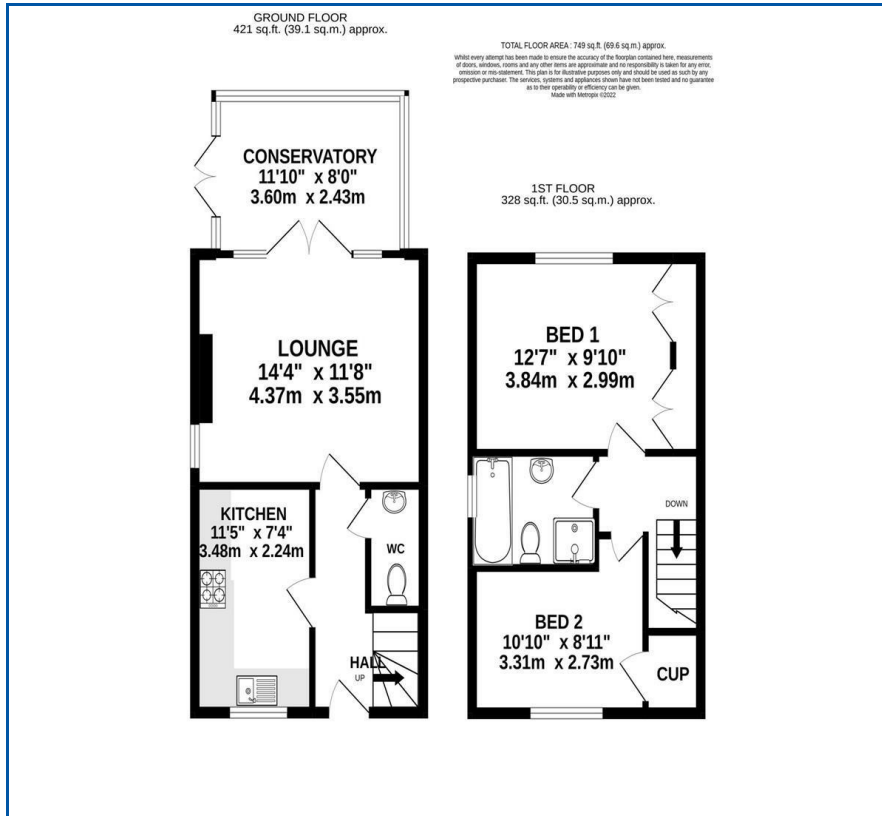
**10a Reddish Lane**

, Lymm, WA13 9RU

**Offers In The Region Of £340,000**



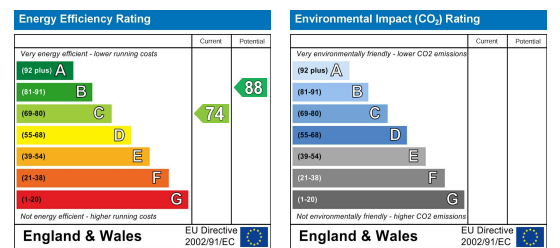
## Floor Plan



## Area Map



## Energy Efficiency Graph



## Viewing

Please contact us on 01925 756931 if you wish to arrange a viewing appointment for this property or require further information.

- Charming 2 Bed Cottage
- Viewing Essential
- Cloakroom
- Rear Garden
- Semi/Rural Location
- Conservatory
- Driveway
- Gas Central Heating

Situated in the charming area of Reddish Lane, Lymm, this delightful semi-detached cottage offers a perfect blend of comfort and character. With two well-proportioned bedrooms, this property is ideal for small families, couples, or those seeking a peaceful retreat.

Upon entering, you are welcomed into a cosy reception room that exudes warmth and invites relaxation. Leading into a conservatory. This space is perfect for entertaining guests or enjoying quiet evenings at home. The cottage features a well-appointed bathroom and cloakroom, ensuring convenience for all residents.

The property also boasts a driveway, a valuable asset in this sought-after location. The surrounding area is known for its picturesque scenery and community spirit, making it an excellent choice for those who appreciate a tranquil lifestyle while still being close to local amenities.



These particulars, whilst believed to be accurate are set out as a general outline only for guidance and do not constitute any part of an offer or contract. Intending purchasers should not rely on them as statements of representation of fact, but must satisfy themselves by inspection or otherwise as to their accuracy. No person in this firm's employment has the authority to make or give any representation or warranty in respect of the property.