



Guide Price
£325,000

Freehold

3x  1x  2x 

**Court Close,
Portsmouth, Hampshire,
PO6**

OVER 60?

Secure this property
for up to **59% less!**

cubitt & west
Helping you move forwards



Main features

- Offered with no forward chain
- Private garage & great potential for off-road parking to front subject to planning permission
- Large sunny aspect rear garden
- Excellent school catchment & transport links
- Upstairs family bathroom & downstairs separate Toilet

Accommodation

GROUND FLOOR

- Entrance Porch
- Hallway
- Lounge/Dining Room: 24'2 x 11'8 (7.37m x 3.56m)
- Kitchen: 8'9 x 8'8 (2.67m x 2.64m)
- Conservatory: 12'6 x 6'1 (3.81m x 1.86m)
- Separate Toilet

FIRST FLOOR

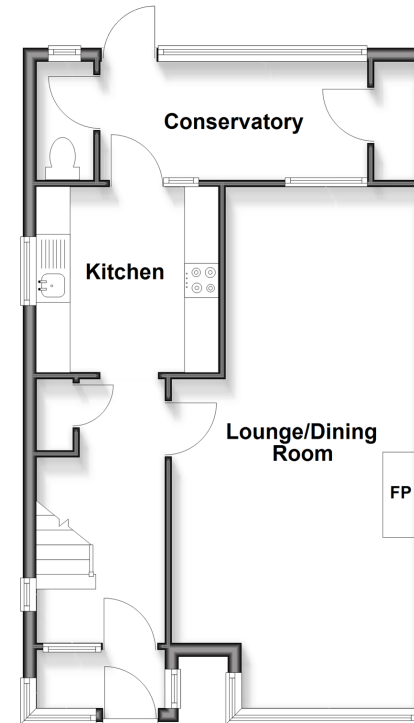
- Landing
- Bedroom 1: 15'4 x 9'6 (4.68m x 2.90m)
- Bedroom 2: 9'7 x 8'9 (2.92m x 2.67m)
- Bedroom 3: 9'0 x 8'5 (2.75m x 2.57m)
- Bathroom
- Separate Toilet

OUTSIDE

- Rear Garden
- Garage
- Front Forecourt

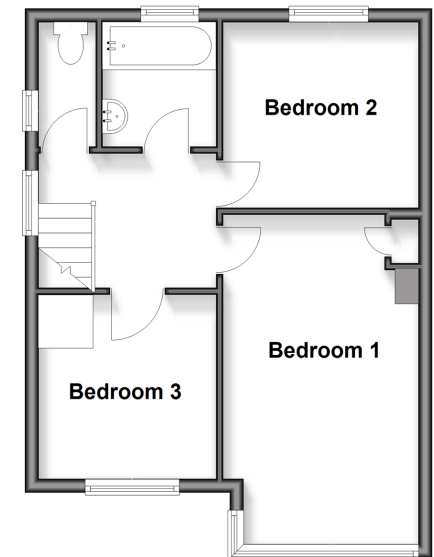
Ground Floor

Approx. 52.2 sq. metres (561.7 sq. feet)



First Floor

Approx. 40.1 sq. metres (431.3 sq. feet)



Call Portsmouth - 023 9266 1213 ■ cubittandwest.co.uk

- If buying to rent, please check if Local Authority licensing schemes apply before proceeding
- Through a Homewise Home For Life Plan people aged 60+ can secure this property for up to 59% less, by purchasing a Lifetime Lease



90140NOX/20260604/MO1/ZMG