



## 48 Egerton Road

, Hartlepool, TS26 0BW

**Offers In The Region Of £370,000**



Igomove take great pleasure in presenting to the market this totally transformed two double bedroom detached bungalow located in one of the most popular areas of West Park, situated close to desirable primary and secondary schools, this stunning abode has been fully renovated to the highest of standards and boasts a wealth of key attributes such as; two stylish bedrooms, beautiful newly fitted family bathroom, superb lounge, open concept kitchen diner, large utility/boot room, fabulous gardens, driveway, garage, UPVC double glazing, gas central heating, fitted blinds, beautiful decor, freehold.



Attractive frontage, established lawned garden with mature shrubbery, two car block paved driveway to garage with electric door, front door into;

Beautiful entrance hallway with impeccable decor, decorative coving, loft access (fully boarded with ladders), stylish herringbone flooring which flows throughout

Fabulous open concept kitchen, diner, family room fitted with host of shaker style larder, display, wall, base, and drawer cabinets, complementary solid quartz surfaces, cabinet lighting, stylish central breakfasting island, inset sink with chrome mixer tap, space for range oven, integrated extractor, integrated dishwasher, integrated fridge freezer, ample dining space, ample seating space, doors to the rear garden, recessed spotlights, stylish herringbone flooring, decorative coving, excellent decor,

Large utility/boot room with lots of fitted storage, plumbing for washing machine, space for tumble dryer, recessed spotlights.

Home office/ library with custom cabinetry/shelving, recessed lighting, herringbone flooring, open plan to;

Delightful lounge with media wall, contemporary inset fire, tasteful decor, decorative coving, beautiful flooring, bi fold doors to the garden.

Stunning double bedroom with impeccable decor, decorative coving.

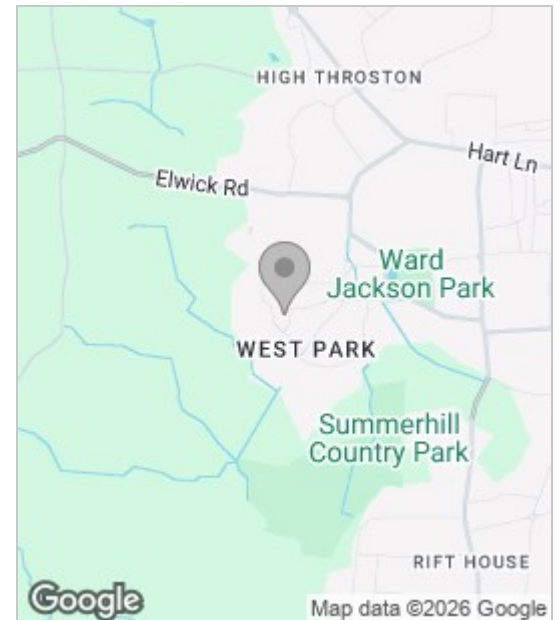
Excellent double bedroom with pristine decor and decorative coving.

Stylish newly fitted family bathroom comprising free standing bath, oversized shower enclosure, beautiful subway tiling, concealed cistern WC, vanity wash basin, illuminated mirror, excellent decor, tiled floor, recessed spotlights, chrome heated towel radiator, under floor heating.

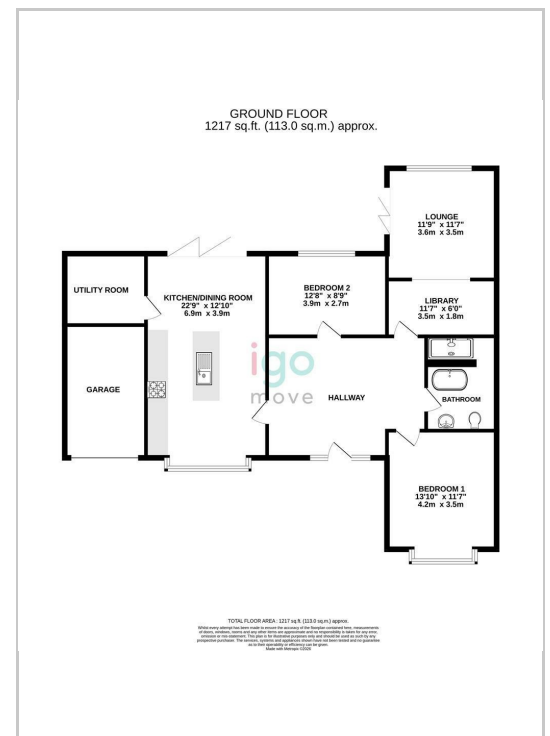
To the rear of the property is an established West facing lawned garden with a variety of mature flora and fauna, Indian sandstone patio area and garden shed.

Homes of this calibre in this location are a rare commodity, ensure early viewing by contacting Igomove at your first opportunity.

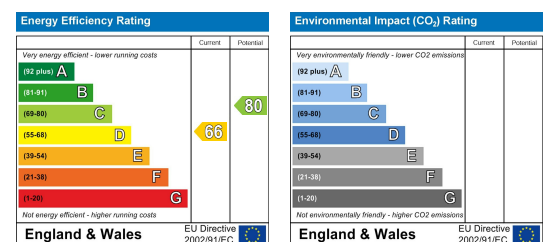
## Area Map



## Floor Plan



## Energy Efficiency Graph



These particulars, whilst believed to be accurate are set out as a general outline only for guidance and do not constitute any part of an offer or contract. Intending purchasers should not rely on them as statements of representation of fact, but must satisfy themselves by inspection or otherwise as to their accuracy. No person in this firm's employment has the authority to make or give any representation or warranty in respect of the property.