



204 Amyand Park Road

Twickenham, TW1

£1,650 per month
(£380.77 per week)

CHESTERTONS



204 Amyand Park Road

Twickenham, TW1

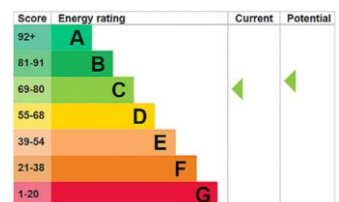
- Top Floor
- Opposite St Margarets Station
- Communal patio
- Allocated Parking
- Loft Storage



A one bedroom top floor flat located in the heart of St Margarets. The flat is presented in good condition and offers a spacious entrance hallway, reception, shower room, fitted kitchen, loft storage, communal patio and secure allocated parking to the rear of the building.

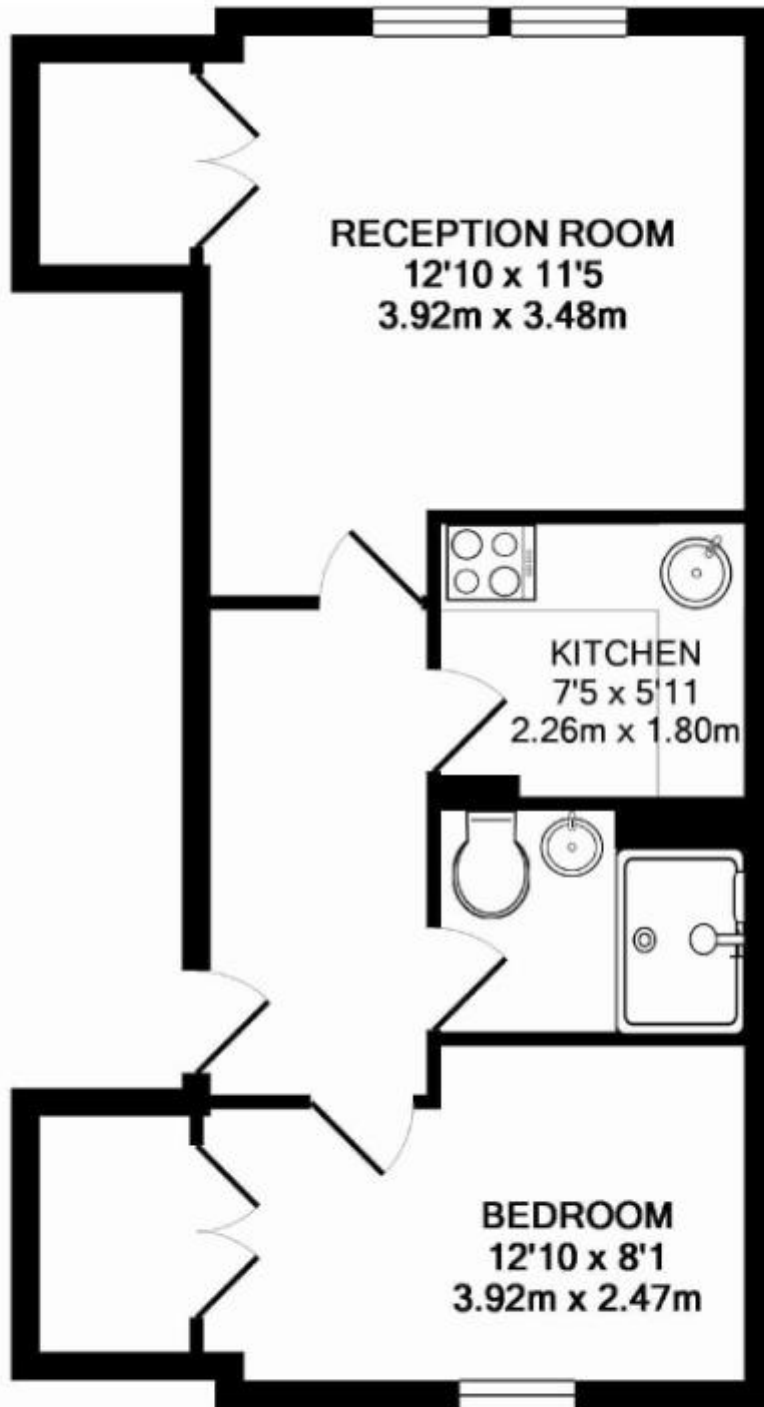
Amyand Park Road is located off St Margarets Road with direct access to St Margarets village for a wide range of shops, restaurants and transport links including the overground station.

Minimum Term: 12 months
Deposit Required: 5 weeks
Local Authority: London Borough Of Richmond Upon Thames
Council Tax Band: C
EPC Rating: C
Furnished, Part Furnished, Unfurnished



Chestertons Richmond Lettings

23a Friars Stile Road
Richmond
Surrey
TW10 6NH
richmondlettingsusers@chestertons.co.uk
02037583333
chestertons.co.uk



AMYAND PARK ROAD, TW1
TOTAL APPROX. FLOOR AREA 441 SQ.FT. (41.0 SQ.M.)

