

Frank Harris & Co.



Levita House, NW1

£625,000

Introducing to the market this spacious three-bedroom property, situated on the second floor in a popular residential area on the northern side of Euston Road. The property comprises three double bedrooms, a large reception room, a kitchen, a bathroom, and a separate W/C. This property presents an excellent opportunity as either a great investment or a comfortable home for young families.

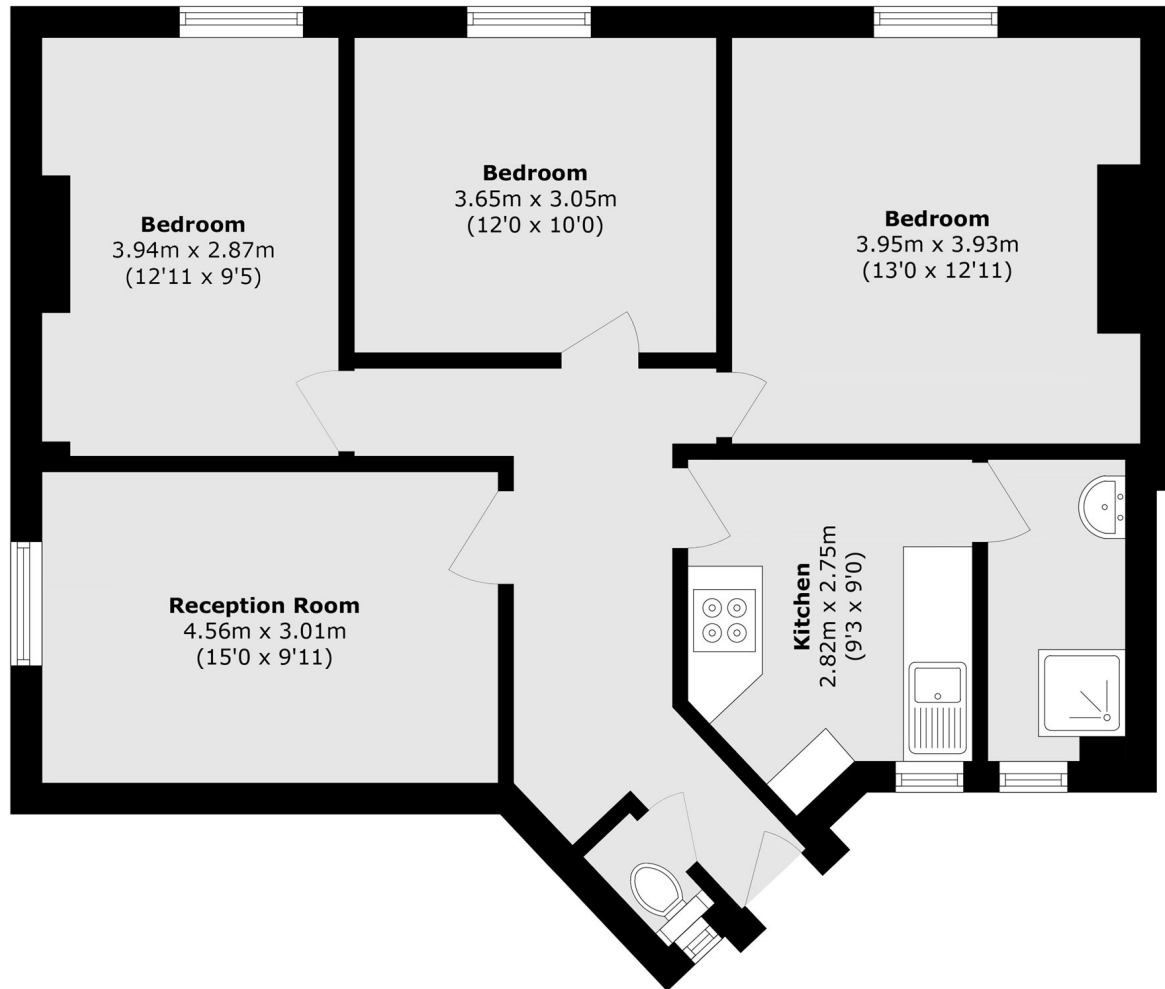


The property is ideally situated between King's Cross St Pancras and Euston stations, offering excellent transport links, including multiple Underground lines and national rail services.

- Three Bedrooms • Central Location • No Onward Chain •
- Lift Access • Convenient Transport Links • Investment Opportunity •



Frank Harris & Co.



Total area (approx.): 78.2 sq. m (841.7 sq. ft)

Frank Harris & Co. Bloomsbury and Kings Cross
81 Marchmont Street,
London, WC1N 1AL
020 7405 4444
bloomsburysales@frankharris.co.uk

Energy Rating: . We aim to make our particulars both accurate and reliable. However they are not guaranteed; nor do they form part of an offer or contract. If you require clarification on any points then please contact us, especially if you're traveling some distance to view. Please note that appliances and heating systems have not been tested and therefore no warranties can be given as to their good working order.

