



59 RIALTO ROAD

£375,000

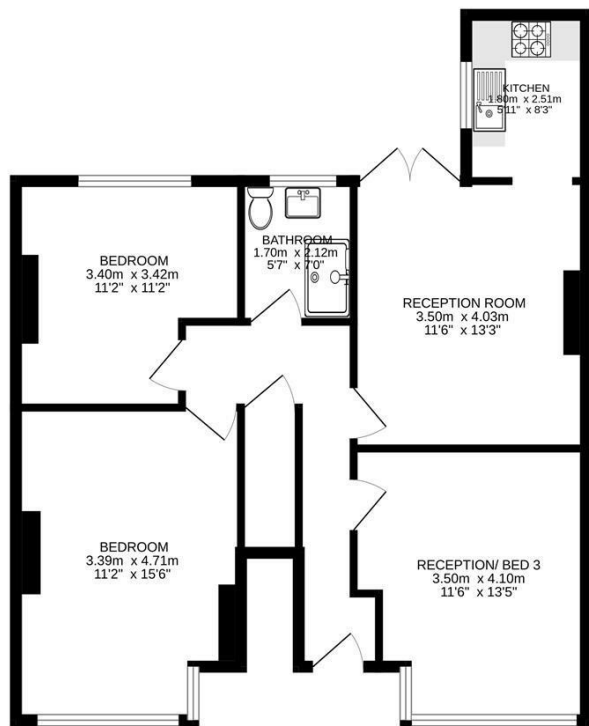
*** A BEAUTIFULLY MAINTAINED TWO/THREE BEDROOM GROUND FLOOR GARDEN MAISONETTE ***

This larger than average garden Maisonette is ideally located a stones throw away from Mitcham Eastfields station which provides quick access into central London offering fast and frequent services to London Victoria.

The property boasts many features including gas central heating, double glazing, own rear garden, modern fitted kitchen and shower room, long leasehold and has been decorated to a high standard.

The accommodation is flexible and can be used as a three double bedroom property with one reception room or alternatively as a two double bedroom and two reception property.

Rialto Road is conveniently located for Mitcham's town centre and within walking distance to the open spaces of Figges Marsh There are also a number of bus routes close by



Ground floor
69.0 sq.m. (743 sq.ft.) approx.

TOTAL FLOOR AREA: 69.0 sq.m. (743 sq.ft.) approx.
Measurements are approximate. Not to scale. Illustrative purposes only.
Made with Metropix ©2025



Energy Efficiency Rating		Current	Potential
Very energy efficient - lower running costs			
(92 plus) A			
(81-91) B			
(69-80) C		72	79
(55-68) D			
(39-54) E			
(21-38) F			
(1-20) G			
Not energy efficient - higher running costs			
England & Wales		EU Directive 2002/91/EC	

Agents Note: Whilst every care has been taken to prepare these particulars, they are for guidance purposes only. All measurements are approximate and are for general guidance purposes only and whilst every care has been taken to ensure their accuracy, they should not be relied upon and potential buyers/tenants are advised to recheck the measurements

Toomey Estate Agents Sales
333a London Road
Mitcham
Surrey
CR4 4BE

0208 715 9333
enquiries@toomeyestateagents.co.uk
www.toomeyestateagents.co.uk



TOOMEY
ESTATE AGENTS