



Westfields Road, W3

£700,000

This two-bedroom semi-detached bungalow offers over 800 sq ft of versatile living space on Westfields Road. The interior features a separate kitchen and a bright reception room with patio doors opening onto a wrap-around garden.

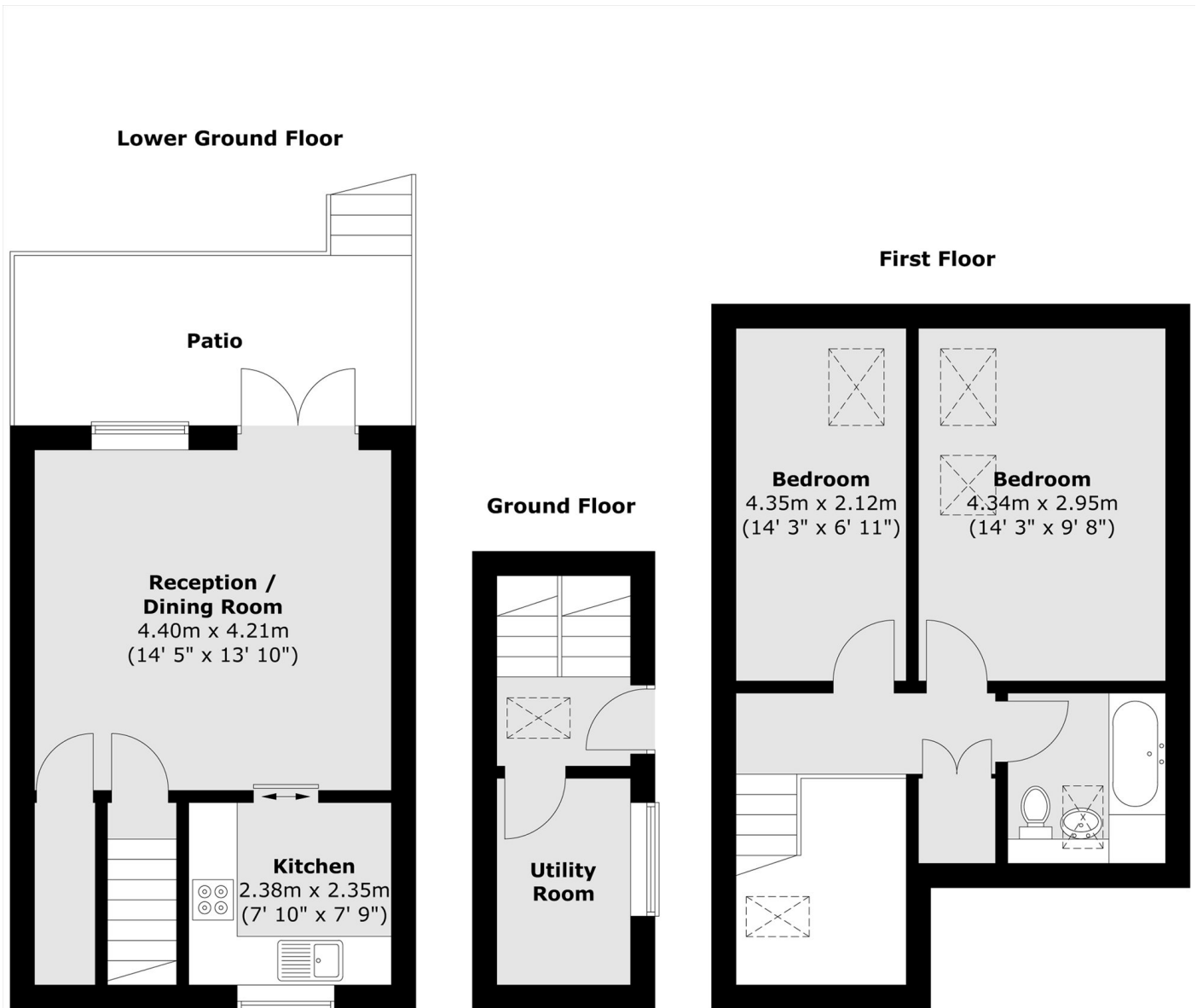
Situated moments from North Acton Playing Fields, the property is ideally located for families, with several independent schools within walking distance. The property offers potential to extend (STPP) and is offered to the market with no onward chain.

Westfields Road is located adjacent to north of North Acton playing fields and is 0.5 Miles to West Acton tube station (Central line), 0.7 Miles to North Acton tube (Central line) station and 0.5 Miles to Acton Main line station. For the motorists the A40 offers easy access both in and out of London.

Features

- Two Bedrooms
- Semi-Detached
- Freehold Bungalow
- Private Garden
- Elizabeth Line
- No Onward Chain

Westfields Road,
London, W3



Total area (approx.) : 76 sq. m (818 sq. ft)
Total patio area (approx.) : 11.2 sq. m (120 sq. ft)