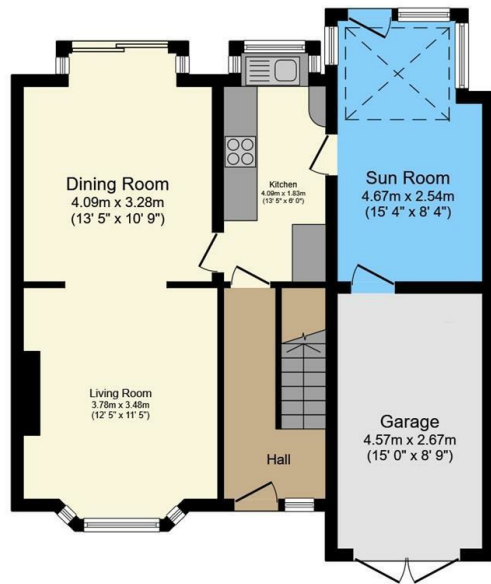




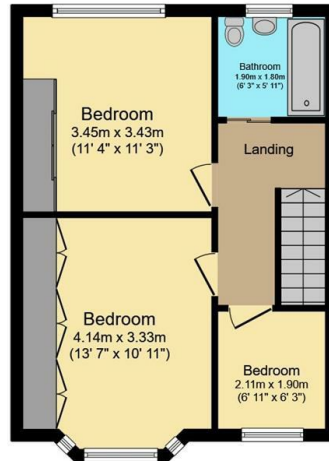
46 Hollins Lane, Sheffield, S6 5GR

Offers Over £290,000

- Extended semi-detached home
- Two double bedrooms and one single bedroom
- Short walk to Rivelin Valley Park
- Council tax band C
- South facing rear garden
- Off street parking and a garage
- Close to Stannington Village, Hillsborough and Crosspool
- Two reception rooms
- Stunning views
- Long leasehold



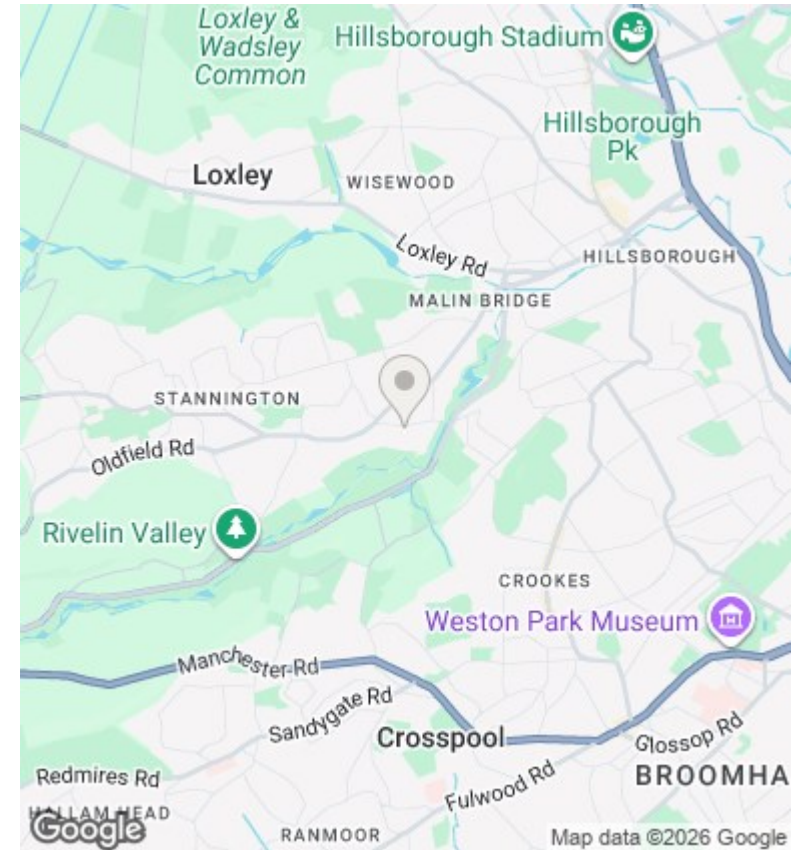
Ground Floor
Floor area 67.7 sq.m. (729 sq.ft.)



First Floor
Floor area 40.5 sq.m. (436 sq.ft.)

Total floor area: 108.3 sq.m. (1,165 sq.ft.)

This floor plan is for illustrative purposes only. It is not drawn to scale. Any measurements, floor areas (including any total floor area), openings and orientations are approximate. No details are guaranteed, they cannot be relied upon for any purpose and do not form any part of any agreement. No liability is taken for any error, omission or misstatement. A party must rely upon its own inspection(s). Powered by www.Propertybox.io



Directions

Viewings

Viewings by arrangement only. Call 01142 687777 to make an appointment.

Council Tax Band

D

EPC Rating:

E

Energy Efficiency Rating		Current	Potential
<i>Very energy efficient - lower running costs</i>			
(92 plus) A			
(81-91) B			
(69-80) C			
(55-68) D			68
(39-54) E		52	
(21-38) F			
(1-20) G			
<i>Not energy efficient - higher running costs</i>			
England & Wales		EU Directive 2002/91/EC	