



CRESCENT ROAD, SW20

£1,750 per week

One bedroom
High specification
Off-street parking
Sliding patio doors
Open-plan kitchen
Energy rating: c

@marshandparsons
marshandparsons.co.uk

MARSH &
PARSONS



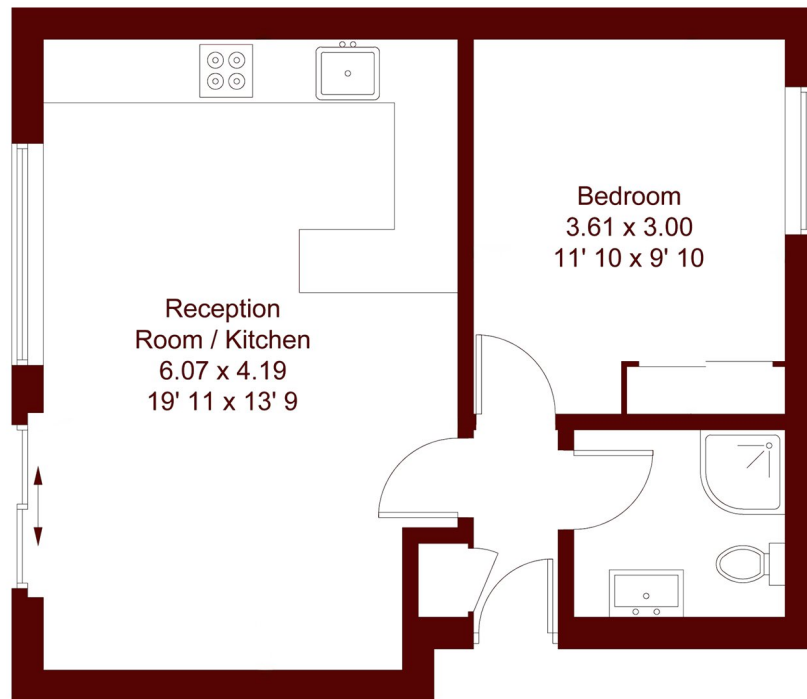
ABOUT THE PROPERTY

A modern one bedroom ground floor apartment with allocated parking space. Finished to a high specification throughout offering a large lounge with open plan fitted kitchen and sliding patio doors, double bedroom with fitted wardrobe, modern shower room.

The property is within easy reach of both Wimbledon town centre and Raynes Park station.



STEP INSIDE CRESCENT ROAD



Ground Floor

Approximate Gross Internal Area = 450 sq ft / 41.8 sq m

Wimbledon
020 8879 6661

Energy Rating: C We aim to make our particulars both accurate and reliable. However, they are not guaranteed; nor do they form part of an offer or contract. If you require clarification on any points then please contact us, especially if you're traveling some distance to view. Please note that appliances and heating systems have not been tested and therefore no warranties can be given as to their good working order

**MARSH &
PARSONS**