



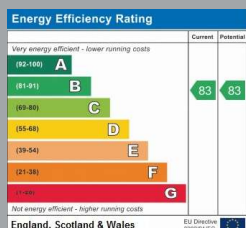
3 ADAMS HOUSE
HAMWORTHY
Dorset, BH15 4FA

£1,250 PCM

goadsby.com

MODERN AND SPACIOUS TWO BEDROOM APARTMENT WITH ALLOCATED PARKING.

- Modern & Spacious Apartment
- Two Bedrooms, Two Bathrooms
- Offered Unfurnished
- Allocated Parking
- EPC Rating: Band B



Reference: 783212

Deposit Amount: £1,384.61

Council Tax Band: C

Furnishing: Unfurnished

Heating Type: Gas Central heaters

Parking: Parking available

Utilities:

Mains Supply Electricity
Mains Supply Water - metered

Drainage: Mains Supply Drainage

Broadband: Refer to Ofcom website
www.ofcom.org.uk/phones-and-broadband

Mobile Signal: Refer to Ofcom website
www.ofcom.org.uk/phones-and-broadband

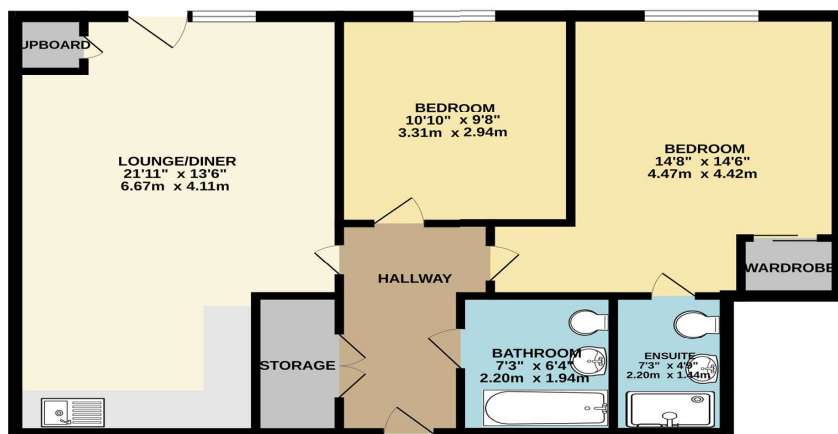
Flood Risk: For more information refer to
gov.uk, check long term flood risk
www.gov.uk/check-long-term-flood-risk



This modern two double bedroom apartment is situated in the development of Carters Quay. This property is offered on an unfurnished basis and offers spacious open plan living area with modern kitchen and benefits from two bathrooms and allocated parking.

Photos from previous tenancy 2023

1ST FLOOR



This Floor Plan is for guidance only and is NOT to SCALE
Made with Metaphor (0208)

PLEASE NOTE:

Measurements quoted are approximate and for guidance only. Fixtures, fittings, services & appliances have not been tested and therefore no guarantee can be given that they are in working order. Images have been produced for information and it cannot be inferred that any item shown is included with the property. These particulars are believed to be correct but their accuracy is not guaranteed and they do not constitute an offer or form part of a contract. Solicitors are specifically requested to verify the sales particulars details in the pre-contract enquiries, in particular: price, local and other searches.

Goadsby & Harding (Residential) Ltd

Registered Office: 99 Holdenhurst Road, Bournemouth, Dorset BH8 8DY Registered in England No. 1871280

01202 686555
poole@goadsby.com

245 High Street North
Poole, Dorset
BH15 1DX