



19 Brentwood Avenue, Bamford, Hope Valley, S33 0AF



# 19 Brentwood Avenue

## Bamford

Guide Price

**£225,000**

Peaceful Peak District Setting

Guide Price: £225,000 – £250,000

A two-bedroom ground floor apartment with its own private entrance, occupying a peaceful residential setting in the picturesque Derbyshire village of Bamford.

Ideal for those looking to downsize, first-time buyers, or purchasers seeking the convenience of single-storey living, the apartment offers well-proportioned accommodation throughout together with communal gardens and residents' off-road parking.

Bamford is a highly sought-after village within the Peak District National Park, offering excellent local amenities, public transport links including a railway station, traditional country inns, a well-regarded primary school, and the nearby Sickleholme Golf Club. Sheffield is approximately 14 miles away, while Manchester and Manchester Airport are around 32 miles distant. The village is surrounded by stunning Derbyshire countryside, ideal for a wide range of outdoor pursuits.

The accommodation comprises: entrance hallway, fitted kitchen, sitting/dining room, two bedrooms and a bathroom.

Offered for sale with no upward chain.

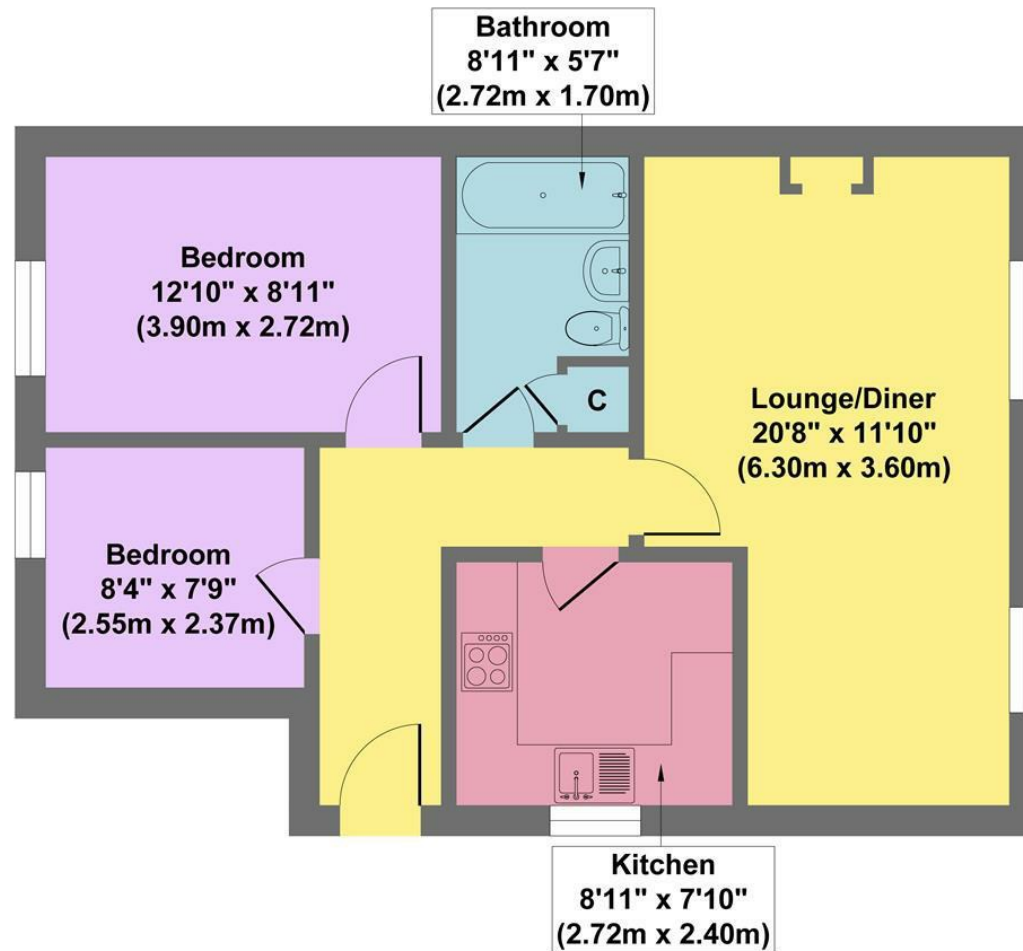


- Peaceful Setting
- Excellent Local Amenities
- Direct Access To A Wealth Of Outdoor Pursuits
- Thriving Community Spirit
- Residents Parking
- Local Rail Links
- Ground Floor
- No Upward Chain
- EPC: C
- Viewings: Hathersage Office





# 19 Brentwood Avenue



**Approx. Gross Internal Floor Area 621 sq.ft / 57.66 sq.m**

Illustration for identification purposes only, measurements are approximate, not to scale

While we endeavour to make our sales particulars fair, accurate and reliable, they are only a general guide to the property and, accordingly, if there is any point, which is of particular importance to you, please contact the relevant office. The Agents have not tested any apparatus, equipment, fittings or services and so cannot verify they are in working order. The buyer is advised to obtain verification. Please note all the measurement details are approximate and should not be relied upon as exact. All plans, floor plans and maps are for guidance purposes only and are not to scale. Under no circumstances should they be relied upon as exact or for use in planning carpets and other such fixtures, fittings or furnishings. YOUR HOME IS AT RISK IF YOU DO NOT KEEP UP REPAYMENTS ON A MORTGAGE OR OTHER LOAN SECURED ON IT. 'A Life Assurance policy may be requested.' 'Written Quotations of credit terms available on request.'

Banner Cross  
T: 0114 268 3241  
E: [bannercross@saxtonmee.co.uk](mailto:bannercross@saxtonmee.co.uk)  
[www.saxtonmee.co.uk](http://www.saxtonmee.co.uk)

Hathersage  
T: 01433 650009  
E: [hathersage@saxtonmee.co.uk](mailto:hathersage@saxtonmee.co.uk)

Bakewell  
T: 01629 815307  
E: [bakewell@saxtonmee.co.uk](mailto:bakewell@saxtonmee.co.uk)

Matlock  
T: 01629 828250  
E: [matlock@saxtonmee.co.uk](mailto:matlock@saxtonmee.co.uk)

