

## 6 Cora Street, Barry

£155,000 Freehold

NO ONWARD CHAIN • IN NEED OF REFURBISHMENT • IDEAL FIRST TIME BUY OR INVESTMENT • TRADITIONAL MID-TERRACE  
• OPEN PLAN LOUNGE/DINER • FITTED KITCHEN WITH SEPARATE UTILITY SPACE • DOWNSTAIRS WC PLUS FIRST FLOOR  
FAMILY BATHROOM • TWO GENEROUS DOUBLE BEDROOMS • ENCLOSED REAR GARDEN • EPC TBC • EXCELLENT  
TRANSPORT LINKS AND CLOSE TO LOCAL AMENITIES



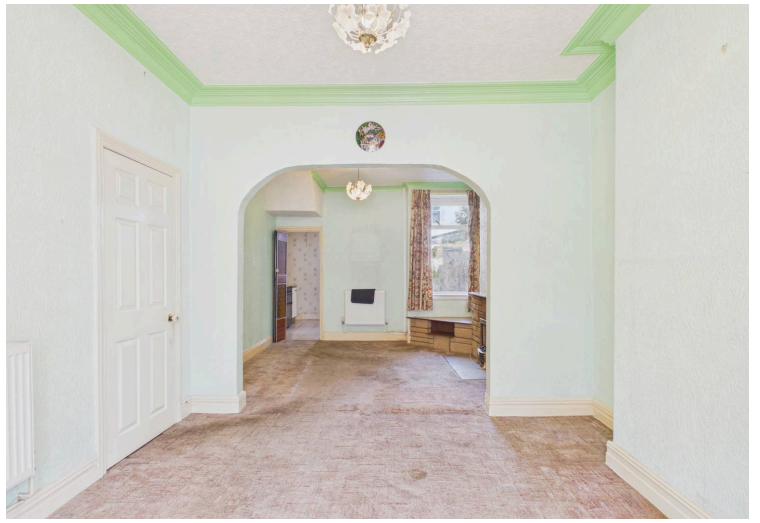
blackbear

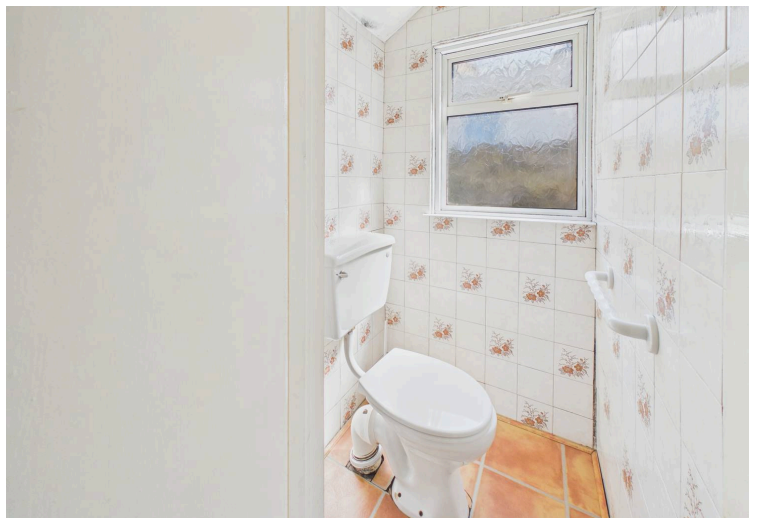
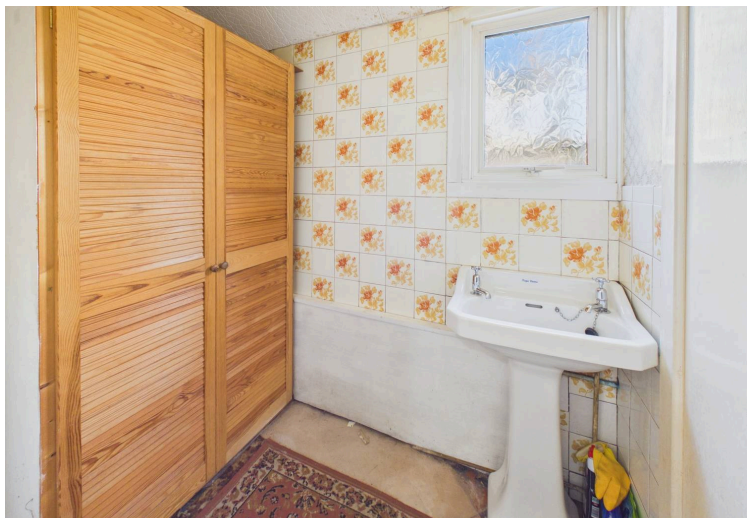


This traditional two bedroom mid-terrace house presents a fantastic opportunity for first time buyers or investors, offered to the market with no onward chain and providing excellent scope for refurbishment and personalisation. The property features a spacious and inviting open plan lounge and dining area, creating a versatile living space that is ideal for both relaxing and entertaining. A fitted kitchen, complemented by a separate utility area, delivers practical functionality and ample storage, while the addition of a downstairs WC enhances every-day convenience. Upstairs, two generous double bedrooms offer comfortable accommodation, each benefiting from good proportions and natural light. The first floor also hosts a family bathroom, providing a well-sized space for daily routines. The layout of this home is ideal for a range of buyers, whether you are looking to step onto the property ladder or seeking a promising investment opportunity. The property enjoys excellent transport links, making commuting straightforward and efficient, and is positioned close to a variety of local amenities, including shops, schools and healthcare facilities. Early viewing is highly recommended to appreciate the potential this property offers!

Council Tax band: C

Tenure: Freehold













First Floor



**Approximate total area<sup>(1)</sup>**  
35.7 m<sup>2</sup>  
384 ft<sup>2</sup>

(1) Excluding balconies and terraces

Calculations reference the RICS IPMS 3C standard. Measurements are approximate and not to scale. This floor plan is intended for illustration only.

GIRAFFE360