



Glencairn Court, Lansdown Road, Cheltenham, GL51 6QN

£260,000

🛏️ 2 🚿 1 🚗 1



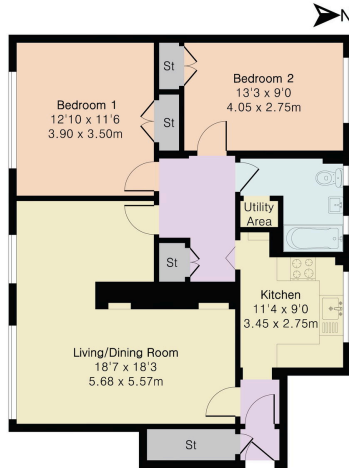
- Private ground floor apartment with its own entrance
- Spacious living/dining room
- Well-presented throughout
- Excellent storage
- Resident parking within development
- Two generous double bedrooms
- Modern fitted kitchen
- Bathroom with contemporary suite
- Single garage en bloc
- Sought-after Lansdown location



Spacious Two Bedroom Ground Floor Apartment with Private Entrance, Garage & Resident Parking

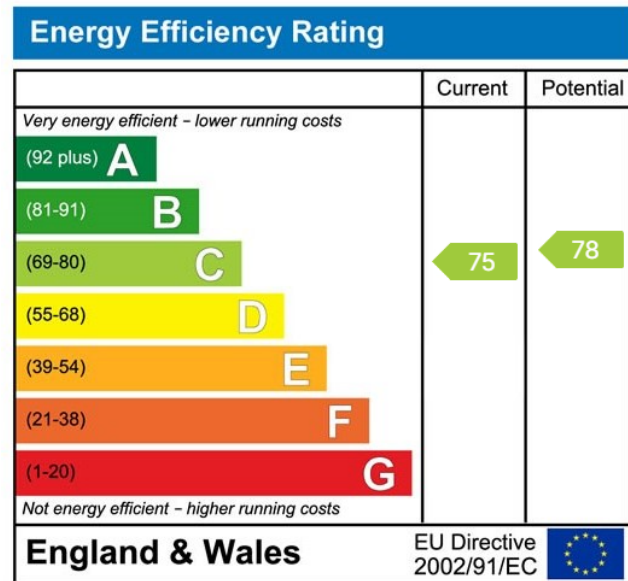


Approximate Gross Internal Area 879 sq ft - 82 sq m



PINK PLAN

Floor plan produced in accordance with RICS Property Measurement 2nd Edition. Although Pink Plan Ltd ensures the highest level of accuracy, measurements of doors, windows and rooms are approximate and no responsibility is taken for error, omission or misstatement. These plans are for representation purposes only and no guarantee is given on the total square footage of the property within this plan. The figure form is for initial guidance only and should not be relied on as a basis of valuation.



Elliot Oliver Sales
 101 Promenade, Cheltenham GL50 1NW
 01242 321091
www.eosales.co.uk

