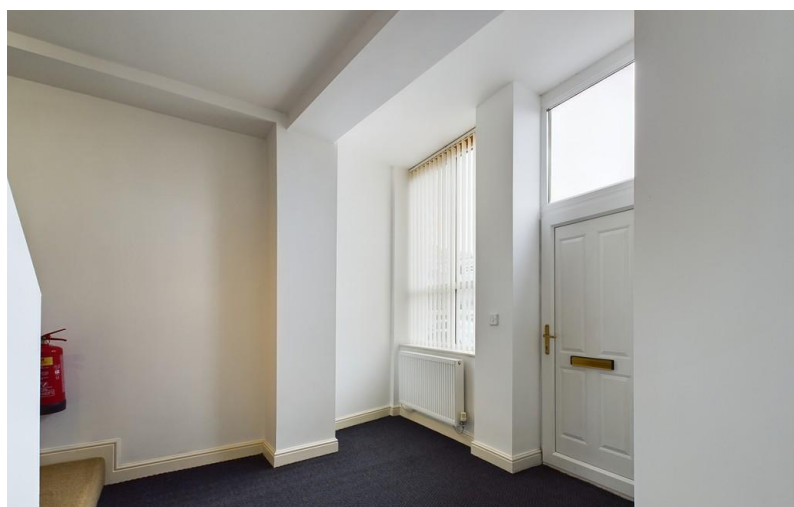


TO LET



Bucknall New Road, Hanley, Stoke-on-Trent

2 Bedrooms, 1 Bathroom, Terraced house

£800 pcm

MARTIN&CO



**Bucknall New Road, Hanley,
Stoke-on-Trent**

2 Bedrooms, 1 Bathroom

£800 pcm

Looking for somewhere close to Hanley Town Centre, it's amenities and the Main Bus Station, then have a look at this 2 bed terrace property. Off Street Parking (but no allocated space) and walking distance to the shops. Huge ground floor open plan lounge/kitchen, Double bedroom and bathroom to the second floor and single bedroom to the third floor.

Date available: 23rd May 2026

Deposit: £923.07

Unfurnished

Council Tax band: A

- Private Parking
- 2 Bed Property
- Close to Hanley Town Centre
- Open Plan Kitchen/ Lounge
- Double Bedroom
- Single Bedroom
- Council Tax Band A









Score	Energy rating	Current	Potential
92+	A		
81-91	B		85 B
69-80	C	78 C	
55-68	D		
39-54	E		
21-38	F		



 <p style="text-align: center;">Ground Floor</p>	 <p style="text-align: center;">Floor 1</p>	<p>Approximate total area⁽¹⁾ 1374 ft² 127.6 m²</p> <p>Reduced headroom 59 ft² 5.5 m²</p>
 <p style="text-align: center;">Floor 2</p>		<p>(1) Excluding balconies and terraces</p> <p> Reduced headroom (below 1.5m/4.92ft)</p> <p>GIRAFFE360</p>

Stoke on Trent (Belvoir)

Albion Street • Stoke-On-Trent • ST1 1QH

T: 01782 262880 • E: stokeontrent@martinco.com <http://www.martinco.com>

01782 262880



Accuracy: References to the Tenure of a Property are based on information supplied by the Seller. The Agent has not had sight of the title documents. A Buyer is advised to obtain verification from their Solicitor. Items shown in photographs including but not limited to carpets, fixtures and fittings are not included unless specifically mentioned within the sales particulars. They may however be available by separate negotiation. Buyers must check the availability of any property and make an appointment to view before embarking on any journey to see a property. No person in the employment of the agent has any authority to make any representation about the property, and accordingly any information given is entirely without responsibility on the part of the agents, sellers(s) or lessors(s). Any property particulars are not an offer or contract, nor for part of one. **Sonic / laser Tape:** Measurements taken using a sonic / laser tape measure may be subject to a small margin of error. **All Measurements:** All Measurements are Approximate. **Services Not tested:** The Agent has not tested any apparatus, equipment, fixtures and fittings or services and so cannot verify that they are in working order or fit for the purpose. A Buyer is advised to obtain verification from their Solicitor or Surveyor.