



North Place, TW11

£699,950

Well-proportioned four bedroom, three storey townhouse with off-street parking and a south facing garden in an excellent location close to all the amenities that Teddington has to offer.

Located in a tranquil residential street in the heart of Teddington town centre, moments from the High Street shops. North Place is close to the station and Bushy Park.

Features

- Town House
- Freehold
- Four Bedrooms
- Excellent Location
- Off-Street Parking
- South Facing Garden

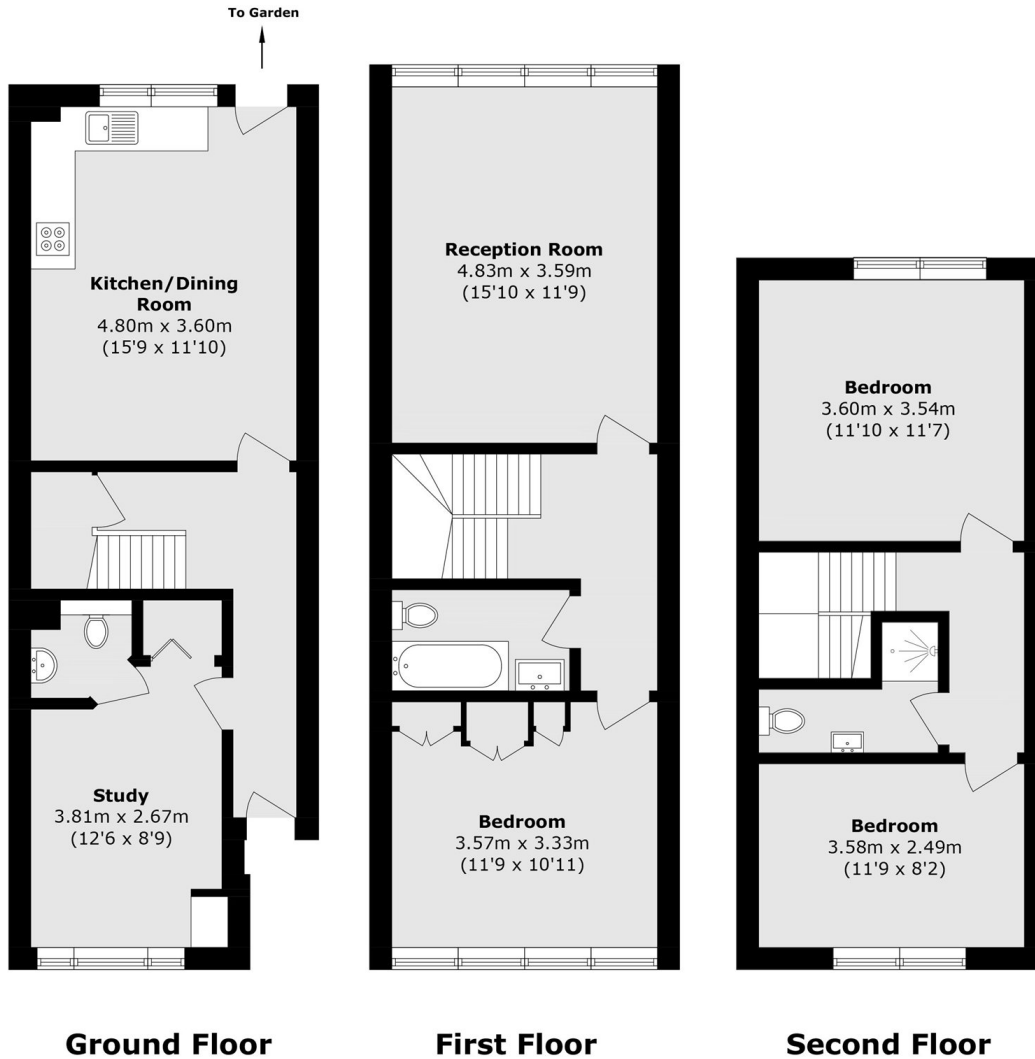


North Place, TW11

Offering 1,226 sq ft of light and spacious accommodation, this home features a well-appointed kitchen/breakfast room with access to a south-facing garden. The garage has been thoughtfully converted, providing an office space or fourth bedroom on the ground floor. The first floor has a large sitting room, a great sized bathroom and main bedroom with fitted wardrobes. The second floor has a further two double bedrooms, a shower room and ample storage.



North Place, Teddington, TW11



Total area (approx.): 113.9 sq. m (1226.0 sq. ft)