



Guide Price
£350,000

Freehold

3x  1x  1x 

**Reculver Road, Herne
Bay, Kent, CT6**

OVER 60?

Secure this property
for up to **59% less!**

Wards
Helping you move forwards



Main features

- Off road parking and garden cabin
- Conservatory extension off the lounge
- Close to regular bus service
- Beautifully presented throughout
- Outskirts of Beltinge village, close to G.P surgery and cliff top walks

Accommodation

GROUND FLOOR

Entrance Hall

Lounge/Diner: 12'9 x 11'5 (3.89m x 3.48m)
narrowing to 10'0 x 8'9 (3.05m x 2.67m)

Kitchen: 10'2 x 7'9 (3.10m x 2.36m)

Conservatory: 12'9 x 8'9 (3.89m x 2.67m)

FIRST FLOOR

Bathroom

Bedroom 1: 11'2 x 10'3 (3.41m x 3.13m)

Bedroom 2: 10'4 x 10'1 (3.15m x 3.08m)

Bedroom 3: 8'9 x 7'9 (2.67m x 2.36m)

OUTSIDE

Utility/Former Garage: 17'3 x 8'1 (5.26m x 2.47m)

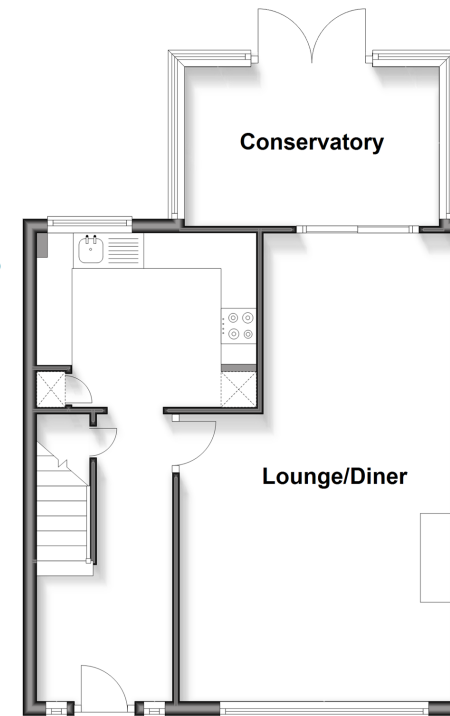
Garden cabin: 9'2 x 8'3 (2.80m x 2.52m)

Garden shed

Off road parking

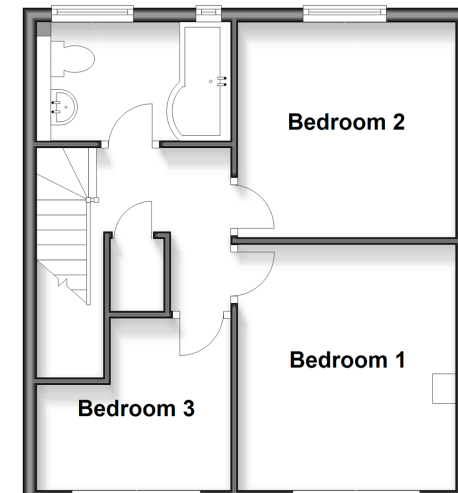
Ground Floor

Approx. 47.6 sq. metres (512.3 sq. feet)



First Floor

Approx. 39.1 sq. metres (421.3 sq. feet)



Call Herne Bay - 01227 361226 ■ wardsof Kent.co.uk

- Legal advice should be taken to verify fixtures/fittings, planning, alterations and/or lease details
- Appliances & services are untested, dimensions are approximate and floor plans are not to scale
- Through a Homewise Home For Life Plan people aged 60+ can secure this property for up to 59% less, by purchasing a Lifetime Lease



11238977/20260205/EM/GG