



**30 GLEN ROAD
CHESSINGTON
KT9 1HE
OFFERS IN EXCESS OF
£500,000**

END TERRACE HOUSE

THREE BEDROOMS

TWO RECEPTION ROOMS

11'2 X 8'7 MODERN KITCHEN

DOWNSTAIRS TOILET & UTILITY ROOM

DOUBLE GLAZED WINDOWS

GAS CENTRAL HEATING

36' X 33' SOUTHERLY FACING GARDEN

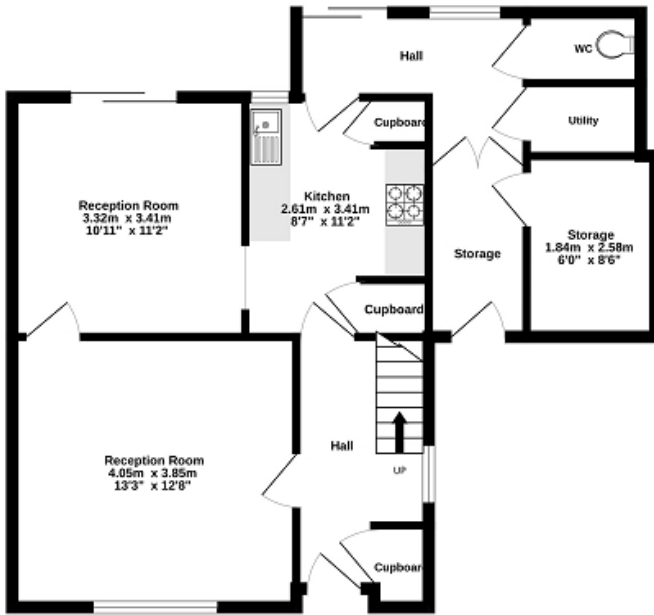
OFF STREET PARKING

AN IDEAL FAMILY HOME

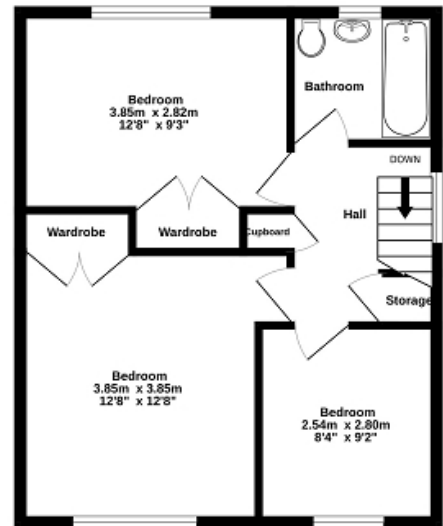
NO FORWARD CHAIN



Ground Floor
61.0 sq.m. (657 sq.ft.) approx.



1st Floor
45.0 sq.m. (484 sq.ft.) approx.



TOTAL FLOOR AREA: 106.0 sq.m. (1141 sq.ft.) approx.

Whilst every attempt has been made to ensure the accuracy of the floorplan contained here, measurements of doors, windows, rooms and any other items are approximate and no responsibility is taken for any error, omission or mis-statement. This plan is for illustrative purposes only and should be used as such by any prospective purchaser. The services, systems and appliances shown have not been tested and no guarantee as to their operability or efficiency can be given.
Made with Metropix ©2025

