



TULSE HILL, SW2

£425,000

- Four bedrooms
- New Lease of 215 years
- Private Balcony
- Communal garden
- Chain free
- Energy rating: D

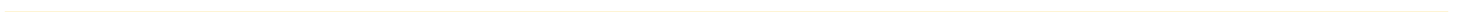




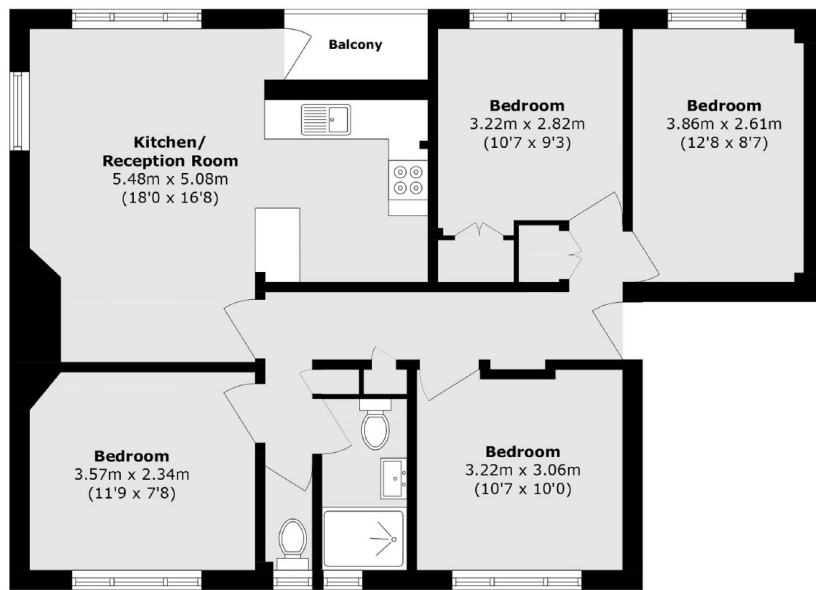
ABOUT THE HOME

A superb four bedroom ground floor flat situated within a purpose built building close to Brockwell Park.

Holdsworth House is located just off Tulse Hill, boasting a range of excellent bus routes and vibrant amenities from both Brixton and Tulse Hill. The delightful Brockwell Park is also nearby.







Total area (approx.): 82.8 sq. m (891.2 sq. ft)

Balcony area (approx.): 2.4 sq. m (25.8 sq. ft)

JACKSONS CLAPHAM

73 Abbeville Road, London,
SW4 9JN

Sales: 020 8487 3177

Lettings: 020 8487 3178

Energy Rating: D We aim to make our particulars both accurate and reliable. However they are not guaranteed; nor do they form part of an offer or contract. If you require clarification on any points then please contact us, especially if you're traveling some distance to view. Please note that appliances and heating systems have not been tested and therefore no warranties can be given as to their good working order.