



Gurney Drive, N2

£1,695,000

This charming semi-detached Neo-Georgian family house is quietly placed in a pretty and sought after location and has an incredible rear garden, ideal for entertainment and as a children's play area.

Well positioned for access to the Market Place with a selection of local shops, there is easy access to places of worship, parks, Brooklands school and the local underground station.

Features

- Five Bedrooms
- Two Bathrooms
- Fitted Kitchen
- Double Reception Room
- Outstanding Rear Garden
- Sought After Location



Gurney Drive, N2

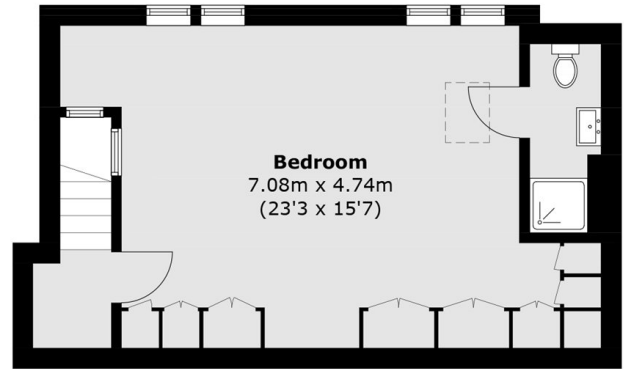
Approached via a pretty front garden, the ground floor has wooden flooring and there is a welcoming entrance hallway with coat storage, a guest WC as well as access to the kitchen and double reception room.

The first floor provides four bedrooms, a family bathroom and there is a large main suite on the top floor with an en suite shower room.

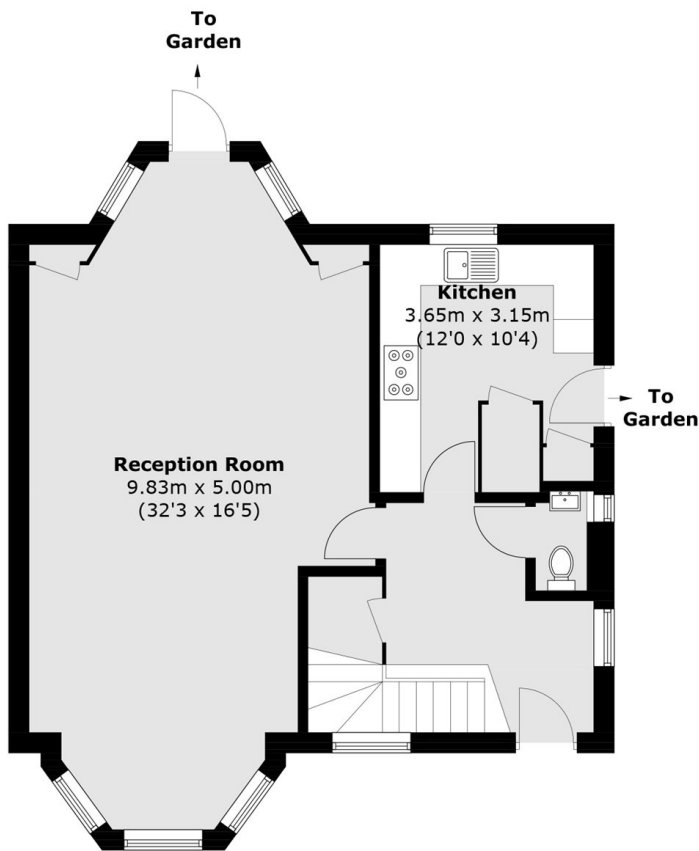
To the rear is a large paved patio and a wonderful garden, mainly laid to lawn with mature planting to the borders.



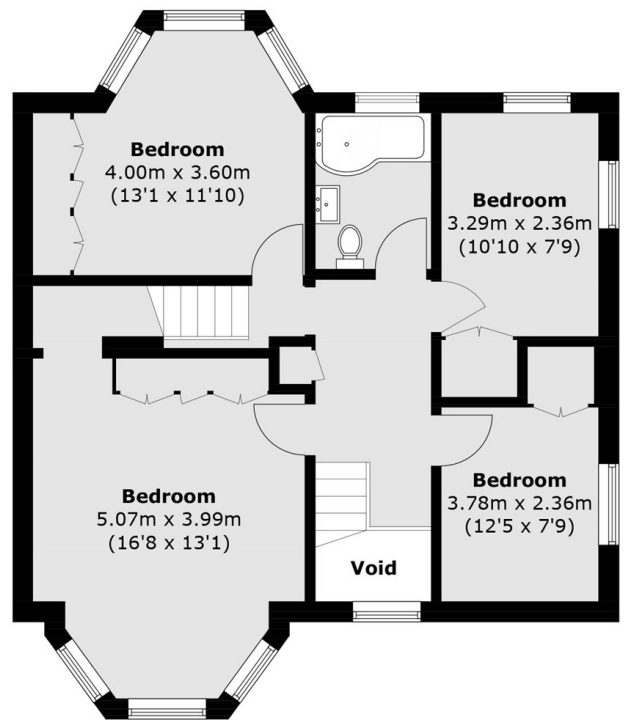
Gurney Drive, London, N2



Second Floor



Ground Floor



First Floor

Total area (approx.): 168.0 sq. m (1,808.3 sq. ft)
(Excluding Void)