

Barnsdale Road, W9

£800,000

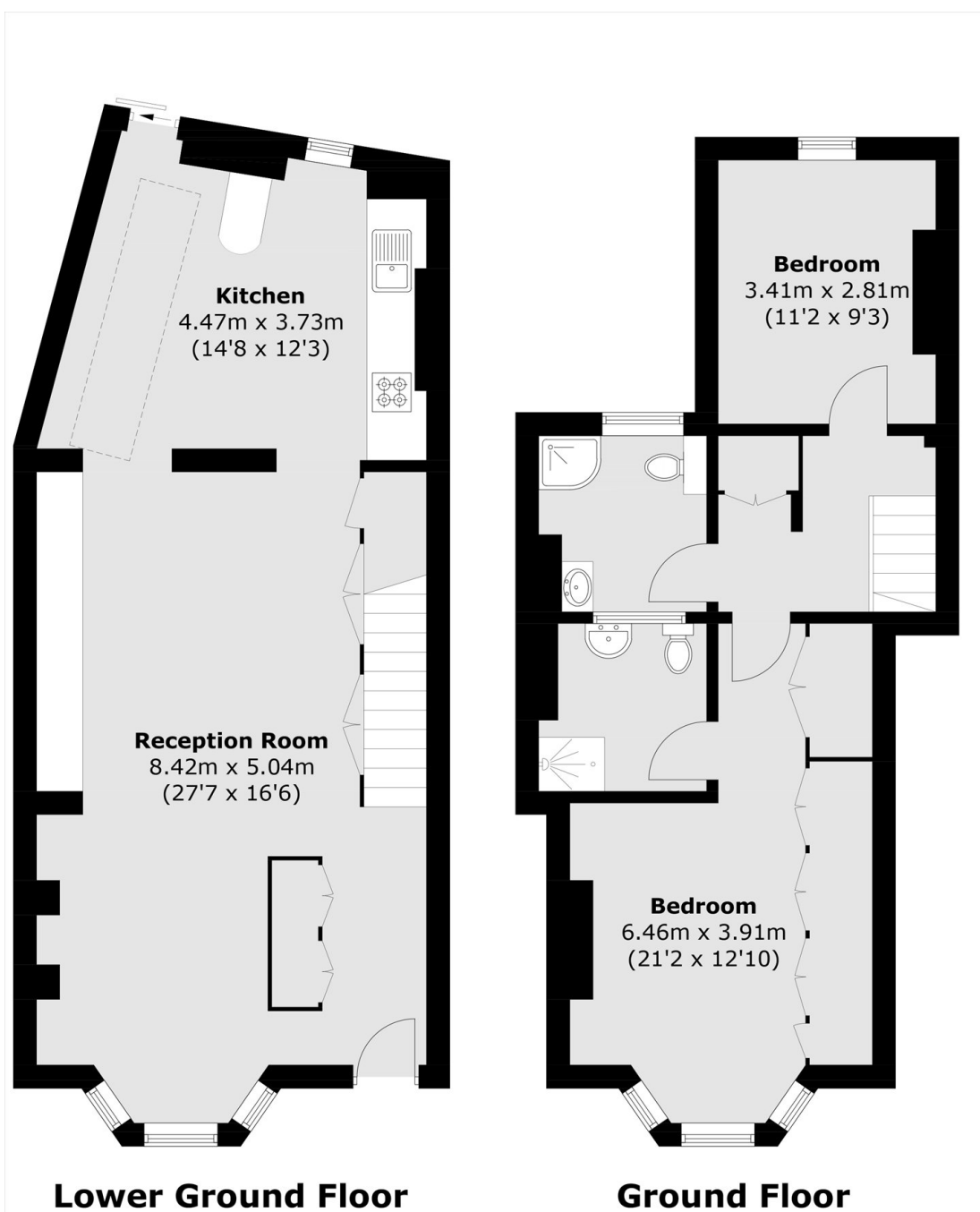
A ground floor maisonette set in a period conversion. This property comes complete with two double bedrooms, one of which features a bay window and en suite, a very spacious reception with access to a private garden, separate kitchen and wooden flooring in the communal areas.

Barnsdale Road is a quiet residential street within walking distance of the amenities offered along Shirland Road and Elgin Avenue, Queen's Park underground station (Bakerloo line), Westbourne Park underground station (Hammersmith & City line), Paddington Recreation Ground and the Canal.

Features

- Maisonette
- Private Garden
- Two Bathrooms
- Spacious Reception
- Chain Free
- Great Location

Barnsdale Road, Maida Vale, W9



Total area (approx.): 105.6 sq. m (1,136.6 sq. ft)