



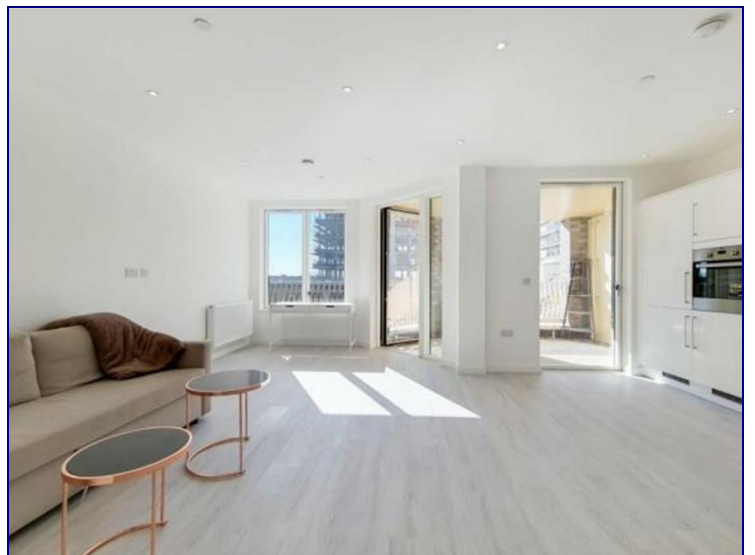
www.kings-group.net

488 Bethnal Green Road

London E2 0EA

Tel: 0207 613 2121

Frogley Park, Barking, IG11 0YG



£2,300 Per Month

Set in a prime new development, this 3 BED 2 BATH bedroom apartment is close to the River Thames and terrific amenities. It features superb entertainment space, with generous open-plan interiors and a terrific private balcony. ****PARKING AVAILABLE****

Woolcott Apartments boasts a sought after location within easy reach of the River Thames and green outdoor spaces such as The Ripple Nature Reserve and Thames View Playing Field. An array of shops, schools and amenities are also nearby.



Energy Efficiency Rating		
	Current	Potential
<i>Very energy efficient - lower running costs</i>		
(92 plus) A		
(81-91) B		
(69-80) C		
(55-68) D		
(39-54) E		
(21-38) F		
(1-20) G		
<i>Not energy efficient - higher running costs</i>		
England & Wales	EU Directive 2002/91/EC	

Environmental Impact (CO ₂) Rating		
	Current	Potential
<i>Very environmentally friendly - lower CO₂ emissions</i>		
(92 plus) A		
(81-91) B		
(69-80) C		
(55-68) D		
(39-54) E		
(21-38) F		
(1-20) G		
<i>Not environmentally friendly - higher CO₂ emissions</i>		
England & Wales	EU Directive 2002/91/EC	

