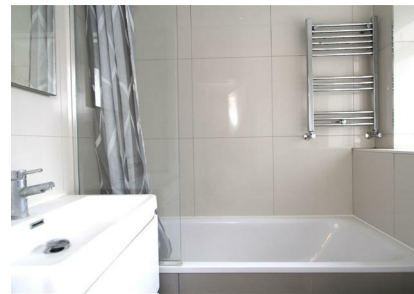


Clive Road, London, SE21 8BZ

£270,000

Council Tax Band:



Being sold via Secure Sale online bidding. Terms & Conditions apply. Starting Bid £270,000

We are delighted to bring to the market this attractive ground floor garden flat, being offered chain free. The property features two well proportioned bedrooms, a spacious reception room, a luxury fully tiled three piece bathroom suite, and a contemporary modern fitted kitchen. A standout feature of the property is the large private garden, perfect for outdoor dining or relaxing. Additional benefits include double glazing and gas central heating throughout. The flat is ideally positioned for both West Dulwich and Gipsy Hill, each offering a great selection of pubs, cafés, restaurants, and independent shops.

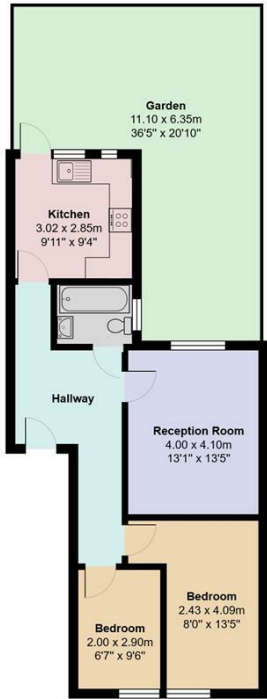
Excellent transport links are also close by, with Gipsy Hill Station just 0.4 miles away providing routes into London Bridge, and Sydenham Hill Station 0.5 miles away offering services into Victoria. Free on street parking is also available.

Early internal viewings are highly recommended to avoid disappointment.

Viewings via Open House



Open House South East



Total Area: 59.2 m² ... 637 ft² (including garden)
All measurements are approximate and for display purposes only

