



jt | JORGENSENTURNER



Tunis Road, Shepherds  
Bush, W12

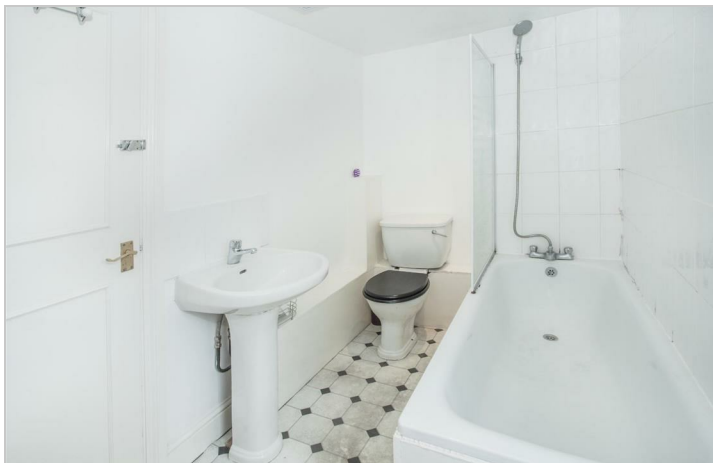
Offers In Excess Of £500,000



 2  1  1  D

# Tunis Road, Shepherds Bush, W12

Offers In Excess Of £500,000



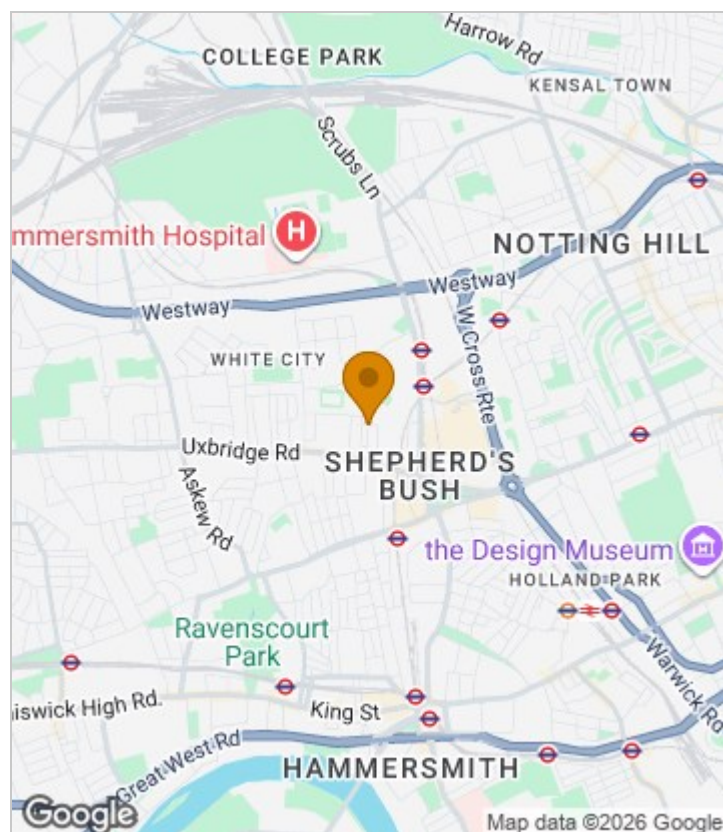
## Summary Description

**DUPLEX APARTMENT.** Tunis Road W12. Duplex apartment over the top two floors of this attractive period building. To the first floor there's two generously proportioned double bedrooms, a fully fitted kitchen and a three piece bathroom. Up at second floor level there's a spacious and light reception room. The property is being offered chain free and with a long lease.

The location offers ultra-convenience for all the shops, bars and restaurants on the Uxbridge Road, the Westfield shopping centre, John Lewis and the infamous Soho House members club. The location is extremely well served transport wise with the Hammersmith and City and Central Line tubes, Shepherds Bush Over ground station and numerous bus routes in to Central London. For recreational use the lovely Hammersmith Park is located at the end of the road.

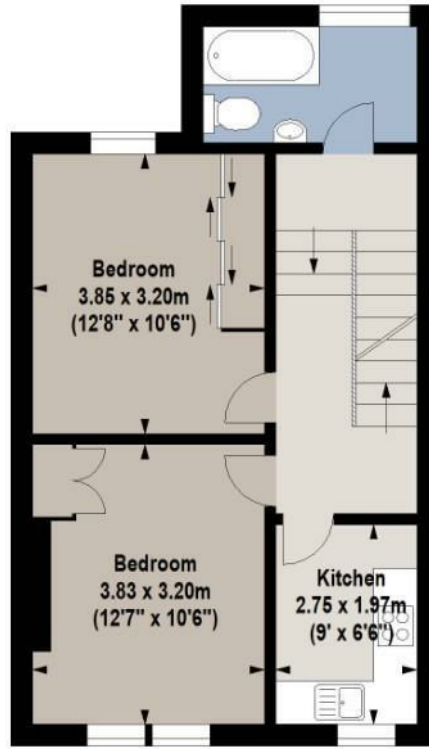
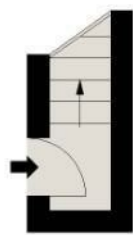
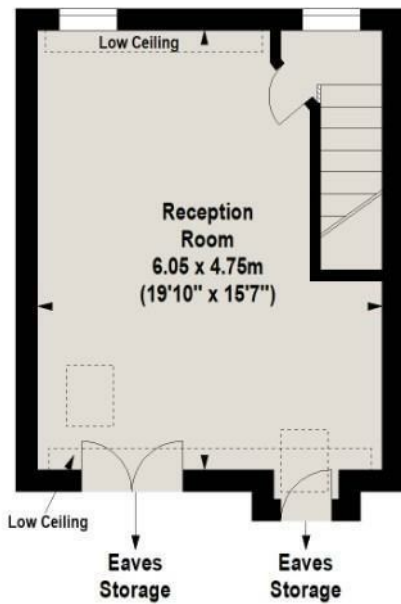
Leasehold 125 Years Unexpired, SC TBC, GR £100, Council Tax Band C

## Area Map





# Floor Plan



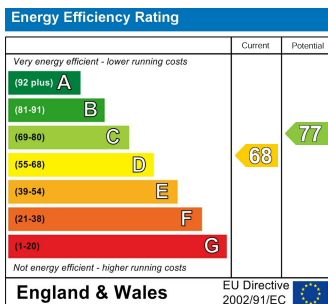
For Identification Purposes Only. Not To Scale. © www.alanaiken.com 2026

Tunis Road, W12

Approx. Gross Internal Area  
77.94 Sq M - 839 Sq Ft



## Energy Efficiency Graph



## Viewing

Please contact our Sales SB Office on 0208 740 8740 if you wish to arrange a viewing appointment for this property or require further information.

- CENTRAL LOCATION
- SPLIT LEVEL
- CHAIN FREE
- CLOSE TO WESTFIELD WHITE CITY
- CENTRAL LINE TUBE
- TWO DOUBLE BEDROOMS
- LONG LEASE
- SPACIOUS RECEPTION ROOM
- HAMMERSMITH AND CITY LINE TUBE

For further information contact:

Sales SB, 234 Uxbridge Road, Shepherds Bush, London, W12 7JD

Tel: 0208 740 8740 Email: [enquiries@jorgensenturner.com](mailto:enquiries@jorgensenturner.com)

<https://www.jorgensenturner.com/>

### Disclaimer

These particulars, whilst believed to be accurate are set out as a general outline only for guidance and do not constitute any part of an offer or contract. Intending purchasers should not rely on them as statements of representation of fact, but must satisfy themselves by inspection or otherwise as to their accuracy. No person in this firm's employment has the authority to make or give any representation or warranty in respect of the property.