

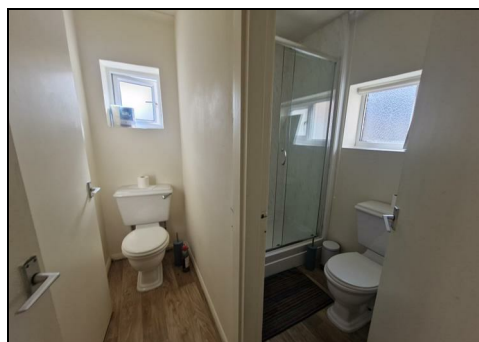



41 GROVE ROAD, NOTTINGHAM, NOTTINGHAMSHIRE NG7 1HE £1,734 PER MONTH

Students only. A large 3 storey house with 4 double bedrooms, open plan lounge, dining room, kitchen, bathroom/WC, shower room/WC, double glazing. Gas central heating, alarm.

48 week contract - exclusive of bills.

RENT PER PERSON PER WEEK EXCL: £100
RENT PER PERSON PER MONTH EXCL: £433.33
DEPOSIT PER PERSON: £500



Energy Efficiency Rating		
	Current	Potential
Very energy efficient - lower running costs		
(92 plus) A		
(81-91) B		
(69-80) C		
(55-68) D		
(39-54) E		
(21-38) F		
(1-20) G		
Not energy efficient - higher running costs		
England & Wales	EU Directive 2002/91/EC	

Environmental Impact (CO ₂) Rating		
	Current	Potential
Very environmentally friendly - lower CO ₂ emissions		
(92 plus) A		
(81-91) B		
(69-80) C		
(55-68) D		
(39-54) E		
(21-38) F		
(1-20) G		
Not environmentally friendly - higher CO ₂ emissions		
England & Wales	EU Directive 2002/91/EC	