



CONIFER HOUSE, SE4

£325,000

Two bedroom apartment
Additional study room
Southernly aspect balcony
Hilly fields nearby
Choice of stations
Energy rating: c



ABOUT THE PROPERTY

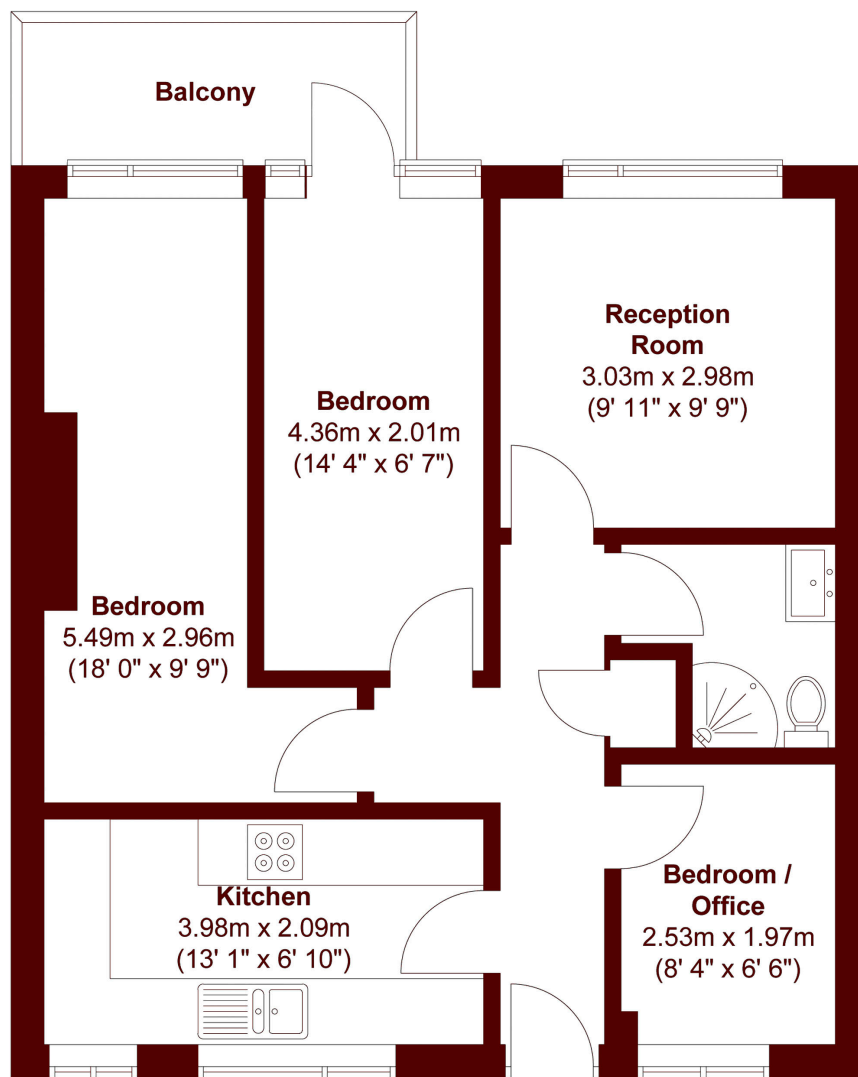
A ground floor two bedroom apartment with additional study room and Southerly aspect balcony.

Having undergone recent internal redecoration, the property feels like it is offered in 'just move in' condition.

The busy commuter will find Brockley Station with the Overground and swift links up to London Bridge only a few hundred metres away, and Crofton Park offering City Thameslink up to Farringdon and St Pancras Int'l not much farther. There is a good choice of independent bars cafés and bistros nearby.



STEP INSIDE CONIFER HOUSE



Total area (approx.) : 55.8 sq. m (601 sq. ft)
Total balcony area (approx.) : 4.3 sq. m (46 sq. ft)

Brockley
020 8629 8164

Energy Rating: C We aim to make our particulars both accurate and reliable. However, they are not guaranteed; nor do they form part of an offer or contract. If you require clarification on any points then please contact us, especially if you're traveling some distance to view. Please note that appliances and heating systems have not been tested and therefore no warranties can be given as to their good working order

**MARSH &
PARSONS**