



Regency Street, SW1P

£715 Per week

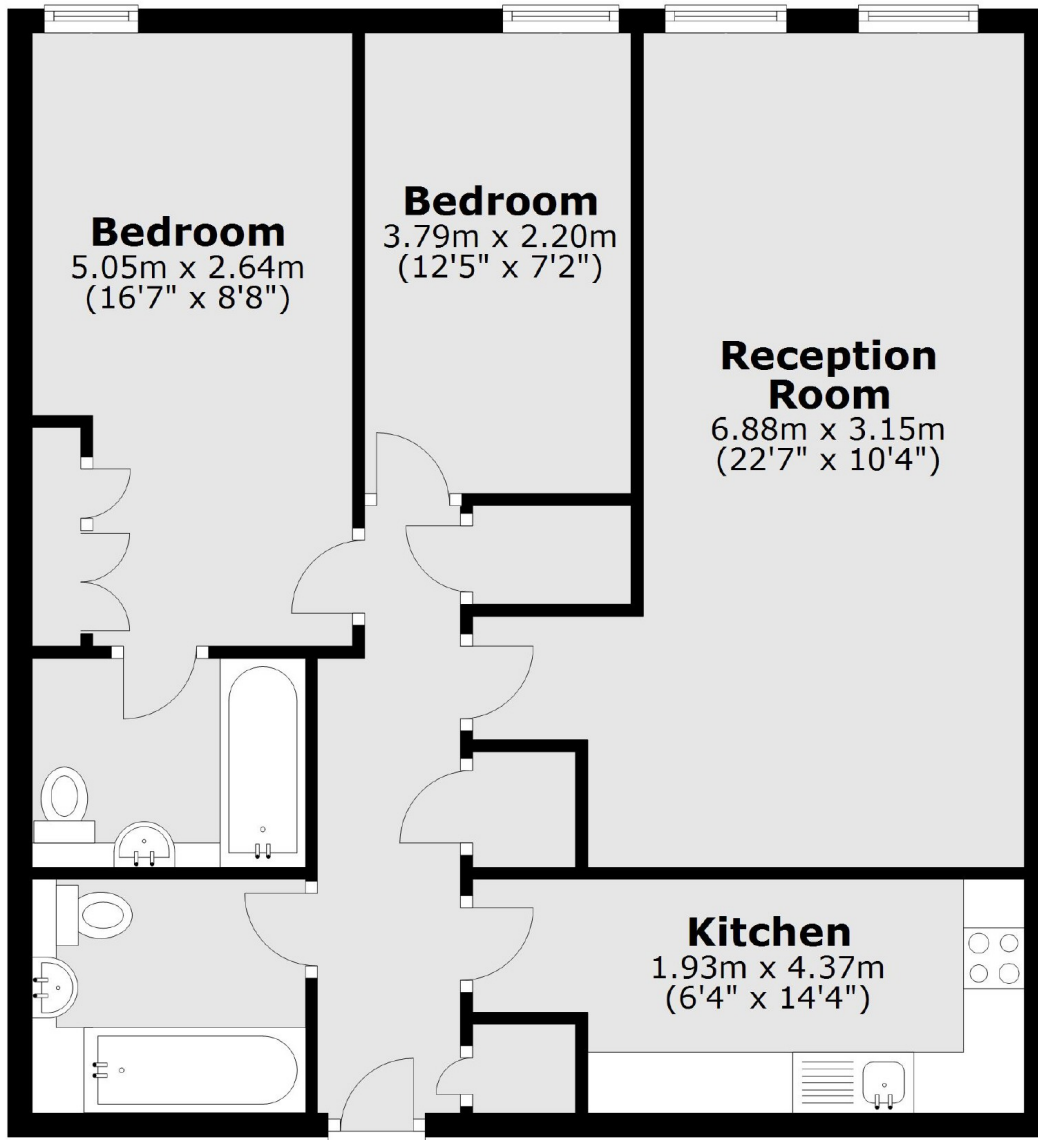
A smart and well presented second floor two bedroom two bathroom apartment situated in secure apartment building with lift access and separate kitchen.

Waterspring Court is a well-maintained building located in a quiet corner of Westminster. Situated within walking distance of Pimlico underground station, Tate Britain and the Houses of Parliament.

Features

- Two Bedrooms
- Two Bathrooms
- Ample Storage
- Newly Decorated
- Lift
- Spacious

Regency Street,
London, SW1P



Total area: approx. 71.2 sq. metres (766.7 sq. feet)