



Cheddar Road, Axbridge
£499,950



debbie fortune

ESTATE AGENTS

www.debbiefortune.co.uk



Bedrooms: 3

Bathrooms: 2

Receptions: 1

A beautifully improved 1930s detached bungalow, positioned to take full advantage of far-reaching countryside views and a particularly lovely outlook towards Cheddar Reservoir. The setting feels open and peaceful, yet remains conveniently placed for access into Axbridge and the surrounding area.

The house has been thoughtfully updated by the current owners and is presented with great care throughout. There is a consistent sense of light and space, with well-balanced rooms and a natural flow that works easily for day-to-day living.



The kitchen forms the heart of the home. Extended to create a bright and generous space, it is fitted with sleek, neutral units and ample work surfaces, along with a Rangemaster cooker. It is a room designed as much for living as it is for cooking, with a seamless connection out to the garden that brings the outside in and makes the most of the views.

The sitting room offers a more intimate feel, centred around a log burner with attractive alcoves to either side, creating a comfortable and characterful space to retreat to.

There are three bedrooms in total. The principal bedroom benefits from its own well-appointed en suite shower room, while the remaining two bedrooms are served by a family bathroom fitted with a bath and shower over, wash basin and WC.

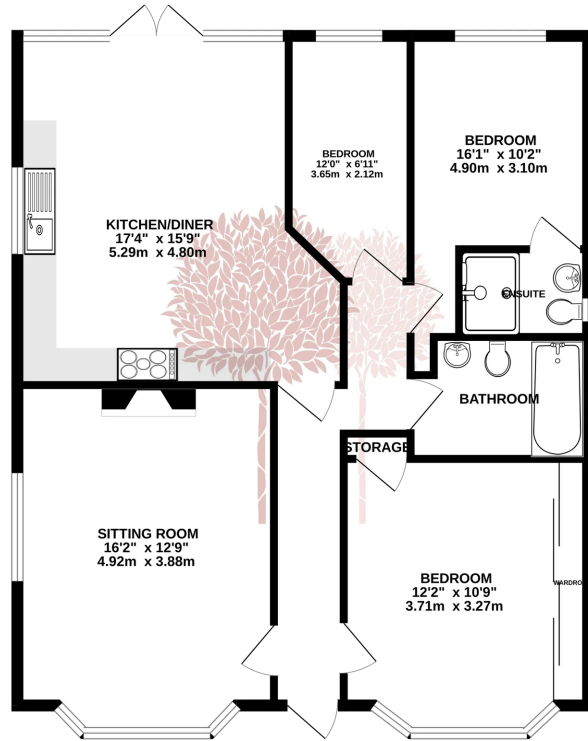
Outside, the property continues to impress. The garden is a particular feature, enjoying a high degree of privacy along with open views across the surrounding countryside and towards the reservoir. There is extensive driveway parking to the front and side, together with a large detached garage. Solar panels have also been installed, contributing to the home's overall efficiency.

What we love about the property...

This is quietly positioned and carefully maintained home, offering a balance of character and modern comfort in a setting that is both accessible and distinctly rural.



GROUND FLOOR
956 sq.ft. (88.8 sq.m.) approx.



Situation: Axbridge's historic medieval square, with its pubs, café, shops and (notably!) the pharmacy, featured in 2026's BBC TV sitcom 'Can you Keep a Secret?' with Dawn French, and showed the town off at its best, with many idyllic drone shots of this picturesque area. Axbridge itself is also lucky enough to have a post office, GP surgery, nursery (from age 2) and a primary school, rated "Good" by Ofsted. Both primary and nursery schools are also available in nearby Weare, while older students typically attend the Kings of Wessex Academy (www.kowessex.co.uk) or one of the nearby independent schools, such as Sidcot School, Wells Cathedral School, or Millfield. Axbridge has a strong community spirit, hosting regular farmers' markets, annual events, and even a unique pageant every decade. Steeped in history, the town was granted its Royal Charter in 1202 and remains one of Somerset's most characterful small towns. Surrounded by stunning countryside, including the Mendip Hills' Area of Outstanding Natural Beauty, the Somerset Levels, Cheddar Reservoir, and the Strawberry Line cycle path, this location offers the best of both town and country living. Excellent transport links via the nearby M5 and A38 make commuting to Wells, Cheddar, Weston-super-Mare, or Bristol straightforward, with Bristol Airport just 20 minutes away. The coast is also easily reached, with sandy beaches a short drive from the town.



Directions: Proceed out of the town along Cheddar Road (A371) in the direction of Cheddar. Continue for a short distance where the property will be found on the right-hand side, clearly identifiable by our For Sale board. What3Words: [///tweed.suitcase.grumbling](https://www.what3words.com////tweed.suitcase.grumbling)

Material Information: This property operates on gas central heating. Council tax band: D EPC