

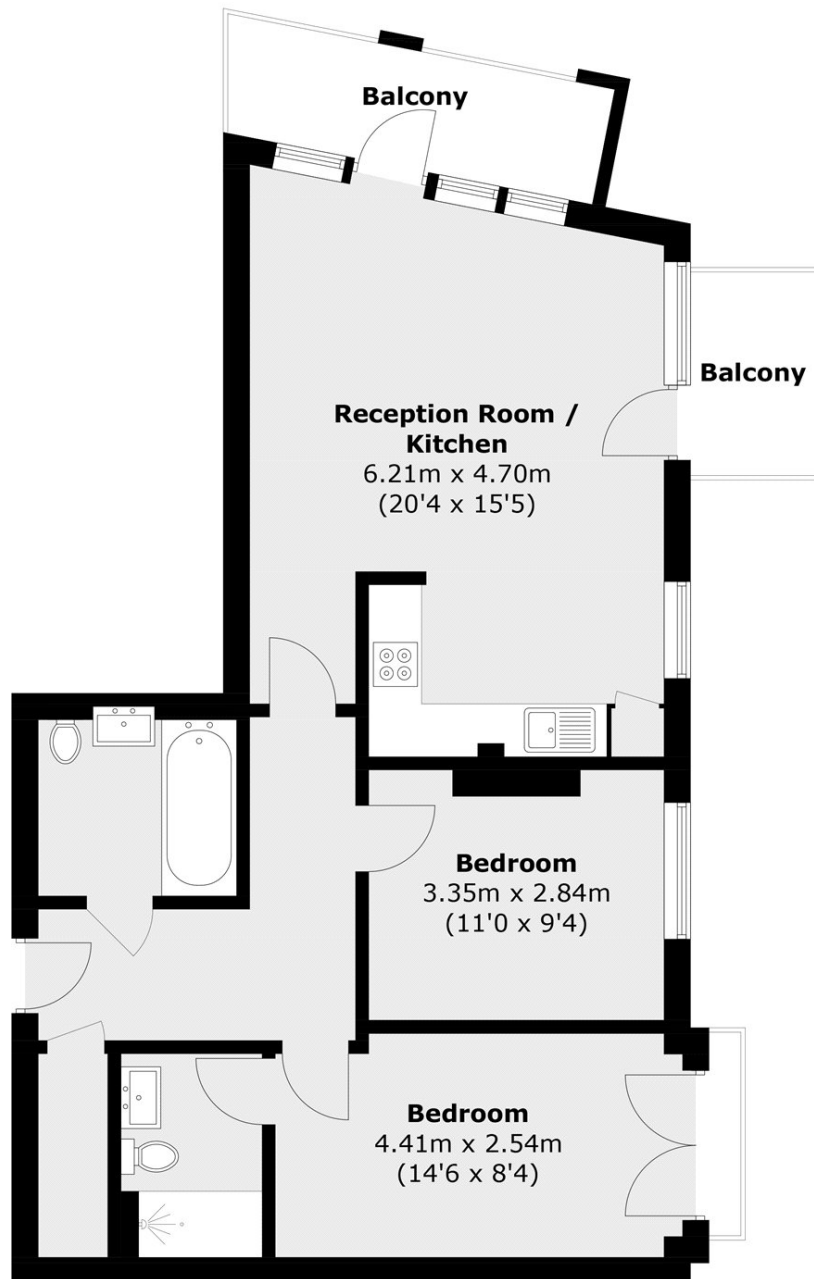


TALISMAN TOWER, E14

£500,000

A spacious, two bedroom apartment in the popular Talisman Tower. This property offers a spacious, open plan kitchen/reception with modern appliances and access to two private balconies for dual aspect views, two double bedrooms, one of which provides an en suite, and a family bathroom.

- Two Double Bedrooms
- Two Private Balconies
- Private Balcony
- 24 Hour Concierge
- Gym
- SMEG Appliances



Total area (approx.): 71.8 sq. m (772.8 sq. ft)
Balconies area : 10.0 sq. m (107.6 sq. ft)

LiFE RESIDENTIAL

36 Millharbour, London, E14

9JS

Sales: 020 3668 1033

Lettings: 020 3668 1030

Energy Rating: B. We aim to make our particulars both accurate and reliable. However they are not guaranteed; nor do they form part of an offer or contract. If you require clarification on any points then please contact us, especially if you're traveling some distance to view. Please note that appliances and heating systems have not been tested and therefore no warranties can be given as to their good working order.