



Thames Village, W4 £675,000

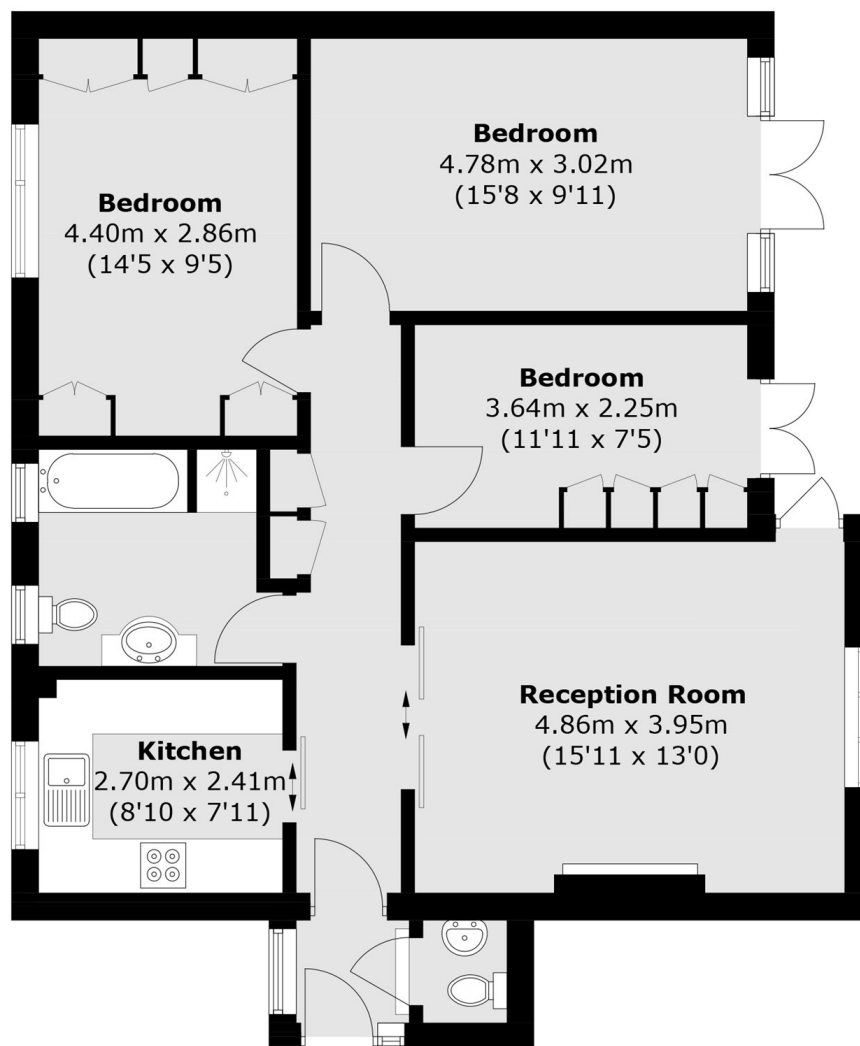
A well-presented ground floor three bedroom maisonette within this private riverside development. With share of freehold, ample storage, parquet flooring, on-site parking, terrace and no onward chain.

Thames Village is located within 0.4 Miles of Chiswick Station (GWR). The property is also a short walk from local green spaces such as Chiswick House & Grounds as well as the river. Local shops, cafés and restaurants are close by next to the station and other areas such as Chiswick Mall and Fauconberg Village. The property is within the catchment of Grove Park School.

Features

- Maisonette
- Ground Floor
- Three Bedrooms
- Private Terrace
- Share Of Freehold
- No Onward Chain

Thames Village, London, W4



Total area (approx.): 82.3 sq. m (885.9 sq. ft)