



Wellesley Close, Moreton-In-Marsh



Welcome to this well presented five bedroom detached house, finished in a charming Cotswold stone effect and offering plenty of space for family living. Step inside to find a central entrance hall, spacious kitchen/dining/snug area, perfect for relaxed meals or entertaining with family & friends. The separate living room gives you a cosy spot to unwind, while a practical utility room and downstairs WC add extra convenience.

Upstairs, you'll find four generous double bedrooms and a single room, with two en-suite shower rooms for a touch of luxury. There's also a handy office space on the ground floor, ideal for working from home or study time. The double garage provides secure parking or extra storage, with space for two more cars on the drive.

Outside, the garden is a real highlight. There's a large lawn for kids or pets to play, plus a patio area that's perfect for summer barbeques or relaxing in the sun. If you're green-fingered, you'll love the home allotment area (great for growing your own veg or flowers). The garden offers plenty of privacy and space to enjoy the outdoors, whether you're hosting friends or simply soaking up the peace and quiet. This is a home that really makes the most of both indoor and outdoor living.



Tenure: We believe the property to be **Freehold**. Potential purchasers should obtain confirmation of this from their solicitor prior to exchange of contracts.

Maintenance Fee: Approx. £250 - £300 per annum.

Council Tax Band: F

EPC: B

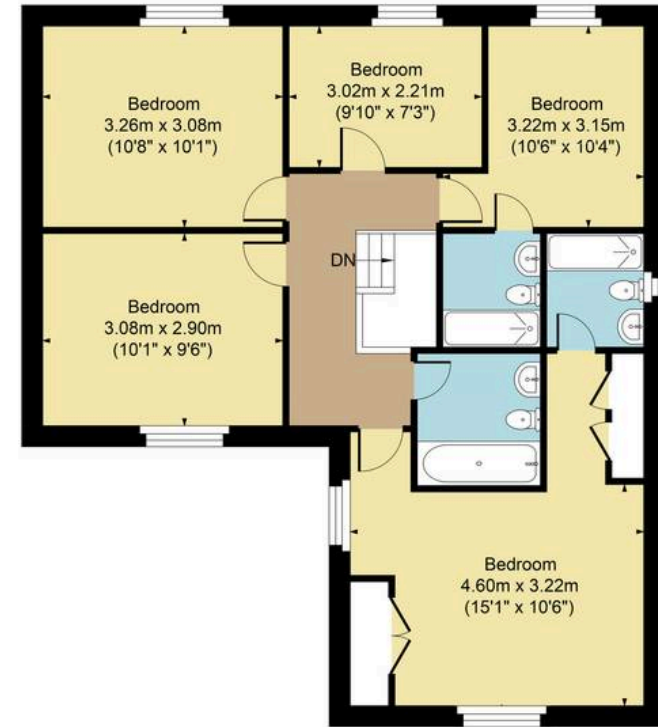
what3words:///zealous.needed.prospers



Main House Approx. Gross Internal Area:- 158.33 sq.m. 1704 sq.ft.
Garage Approx. Gross Area:- 35.82 sq.m. 385 sq.ft.
Total Approx. Gross Area:- 194.15 sq.m. 2089 sq.ft.



Ground Floor



First Floor

FOR ILLUSTRATIVE PURPOSES ONLY-NOT TO SCALE
The position & size of doors, windows, appliances and other features are approximate only.
□□□ Denotes restricted head height
www.dmlphotography.co.uk