



## ST. GEORGE WHARF, SW8

£550,000

Two double bedrooms  
Open plan  
Excellent transport  
24-hour concierge  
Good condition  
Close to River Thames

@marshandparsons  
marshandparsons.co.uk

MARSH &  
PARSONS



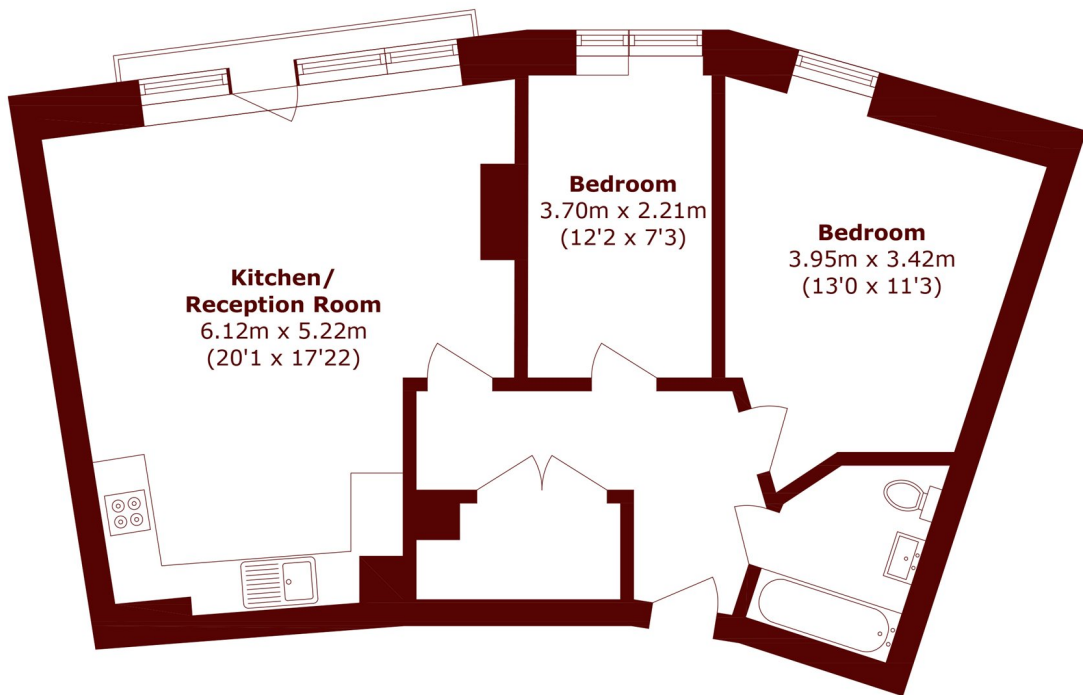
# ABOUT THE PROPERTY

OFFERS OVER. A spacious two bedroom apartment located on the sixth floor of Admiral House within the sought after St George Wharf development in Vauxhall. Offering impressive views across the London skyline, the property features a bright open-plan reception area with floor-to-ceiling windows, a modern fitted kitchen, two well-proportioned bedrooms and contemporary bathrooms.

The location is brilliant as St Georges Wharf benefits from a concierge, on site shops and amenities, situated in a fantastic location close to Vauxhall station (National Rail & London underground) allows fast links to Victoria and the City.



# STEP INSIDE ST. GEORGE WHARF



Total area (approx.): 63.5 sq. m (683.5 sq. ft)

**Kennington**  
020 7587 1533

Energy Rating: B We aim to make our particulars both accurate and reliable. However, they are not guaranteed; nor do they form part of an offer or contract. If you require clarification on any points then please contact us, especially if you're traveling some distance to view. Please note that appliances and heating systems have not been tested and therefore no warranties can be given as to their good working order

**MARSH &  
PARSONS**