



Camden Square

London, NW1

Guide Price £875,000

Occupying the raised ground floor of this large imposing semi-detached period house with views across Camden Square.

The accommodation consists of entrance hall to spacious reception room with original fireplace high ceilings and full height French doors.

Double doors open in the corner of the room to a fully fitted kitchen. The hallway leads to the bathroom, separate W.C. and two bedrooms with balconies both affording a delightful outlook towards the gardens at the rear of the property. Wrought iron stairs lead down to the rear section of the large southwest facing garden.

CHESTERTONS



Camden Square

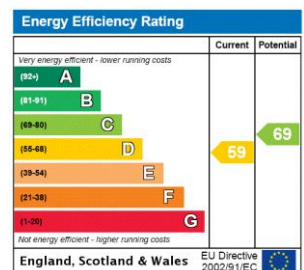
London, NW1

- Fantastic location
- Two bedrooms
- Raised ground floor
- Large garden
- High ceilings and period features
- Chain-free



Located in the heart of the Camden Square conservation area, facing the leafy green gardens of the Square itself. The position also benefits from being close to all the amenities of Camden Town and Kentish Town. The Collège Français Bilingue de Londres (CFBL) and Camden School for Girls are both within walking distance. Camden Town underground on the Northern Line and Camden Road Overground provide excellent transport links to and from the City and surrounding areas. Both Kings Cross and St Pancras International are close by.

Tenure: Share of Freehold 952 years
Service Charge: TBC
Ground Rent: £0
Local Authority: Camden
Council Tax Band: E

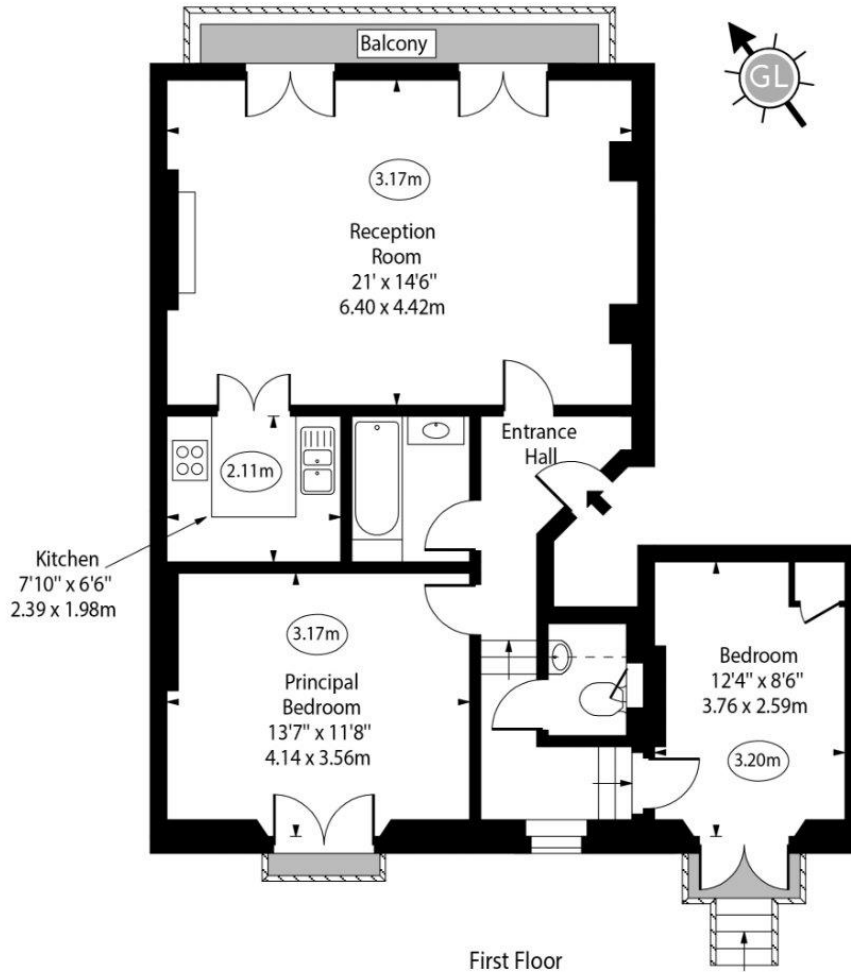


Chestertons Camden & Kentish Town Sales

99-101 Parkway
 Camden
 London
 NW1 7PP
 camden@chestertons.co.uk
 020 7267 2053
 chestertons.co.uk

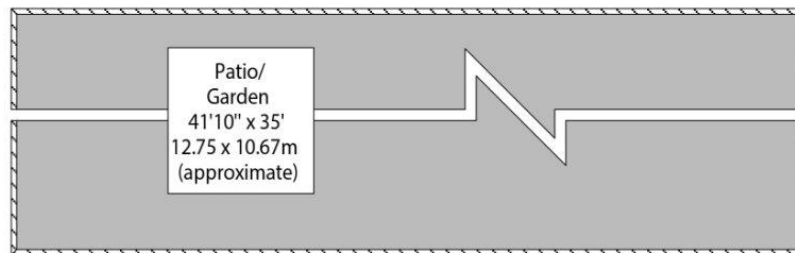
Camden Square

○ - Ceiling Height



First Floor

Gross Internal Area - 775 Sq Ft - 72.00 Sq M



Ground Floor

Approx Gross Internal Area 775 Sq Ft - 72.00 Sq M

Every attempt has been made to ensure the accuracy of the floor plan shown. However, all measurements, fixtures, fittings, and data shown are approximate interpretations and for illustrative purposes only. Measured according to the RICS. Not To Scale.

www.goldlens.co.uk

Ref. No. 031082E

