

REGAL CHASE

ALDERHOLT

The Bridport

Plots 23 & 25 (24 & 26 handed)

2 bedroom terraced and semi-detached



Computer generated image.



ANTLER HOMES

The Bridport

Plots 23 & 25

(24 & 26 handed)

**2 bedroom terraced (plots 24-26)
and semi-detached (plot 23)**

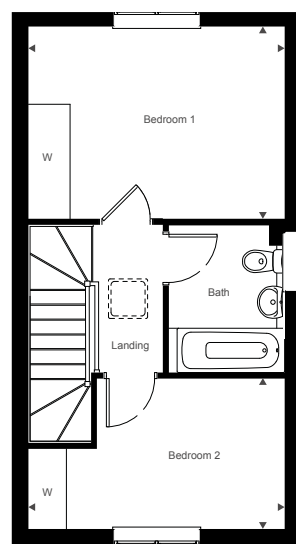
First Floor

Bedroom 1

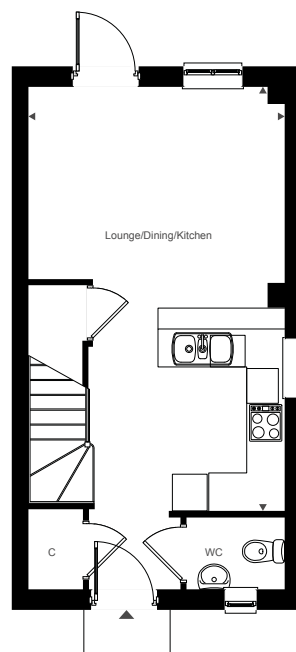
4,050mm x 3,039mm 13'3" x 10'0"

Bedroom 2

4,050mm x 2,377mm 13'3" x 7'10"



First Floor



Ground Floor



ANTLER HOMES

Details may vary from plot to plot. Dimensions are approximate and should not be used for furniture space, appliance space or carpet sizes. Please ask for details of your chosen plot. The contents of this document do not form or constitute a warranty or represent part of any contract. Please note: to increase legibility these plans have been sized to fit the page. As a result, each plan may be a different scale to others within this document. CGIs are for indicative purposes only and can be subject to change. AH289/June 2025.

REGAL CHASE

ALDERHOLT

The Sherbourne

Plots 28, 30, 39, 41 & 42 (29 & 40 handed)

3 bedroom terraced



Computer generated image.



ANTLER HOMES

The Sherbourne

Plots 28, 30, 39, 41 & 42

(29 & 40 handed)

3 bedroom terraced

Second Floor

Bedroom 1

4,186mm x 3,952mm 13'9" x 13'0"

First Floor

Bedroom 2

3,952mm x 3,082mm 13'0" x 10'1"

Bedroom 3

3,272mm x 1,891mm 10'9" x 6'2"

Ground Floor

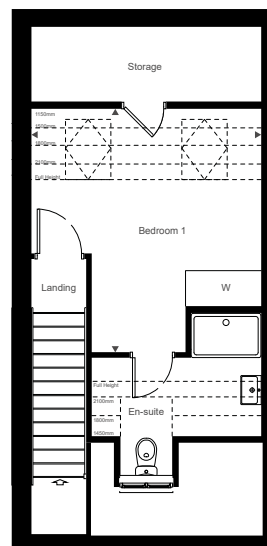
Lounge/Dining Room

4,201mm x 3,952mm 13'9" x 13'0"

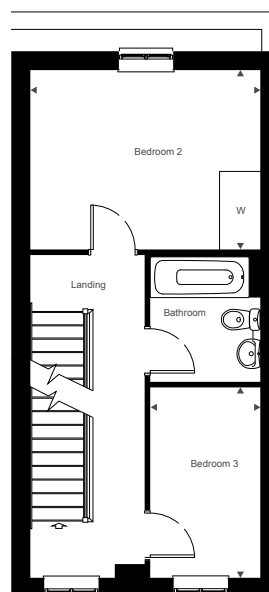
Kitchen

3,948mm x 1,874mm 12'11" x 6'2"

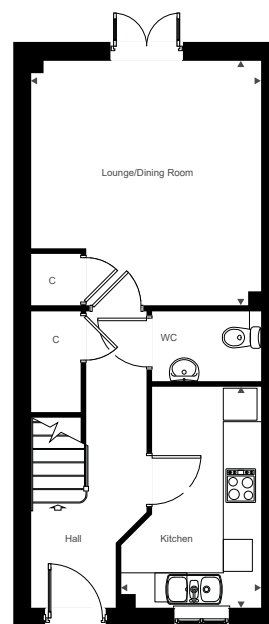
Second Floor



First Floor



Ground Floor



ANTLER HOMES

Details may vary from plot to plot. Dimensions are approximate and should not be used for furniture space, appliance space or carpet sizes. Please ask for details of your chosen plot. The contents of this document do not form or constitute a warranty or represent part of any contract. Please note: to increase legibility these plans have been sized to fit the page. As a result, each plan may be a different scale to others within this document. CGIs are for indicative purposes only and can be subject to change. AH289/June 2025.

REGAL CHASE

ALDERHOLT

The Verwood

Plot 27

2 bedroom coach house



Computer generated image.



ANTLER HOMES

The Verwood

Plot 27

2 bedroom coach house

First Floor

Kitchen/Dining/Lounge

6,206mm x 5,357mm 20'5" x 17'7"

Bedroom 1

4,448mm x 3,242mm 14'7" x 10'8"

Bedroom 2

4,283mm x 2,981mm 14'1" x 9'10"



First Floor



Ground Floor



ANTLER HOMES

Details may vary from plot to plot. Dimensions are approximate and should not be used for furniture space, appliance space or carpet sizes. Please ask for details of your chosen plot. The contents of this document do not form or constitute a warranty or represent part of any contract. Please note: to increase legibility these plans have been sized to fit the page. As a result, each plan may be a different scale to others within this document. CGIs are for indicative purposes only and can be subject to change. AH289/June 2025.

REGAL CHASE

ALDERHOLT

The Galloway

Plot 31, 32, 33, 34, 56, 61 & 62 (45, 46, 50, 57 & 59 handed)

4 bedroom detached



Computer generated image.



ANTLER HOMES

The Galloway

Plot 31, 32, 33, 34, 56 61 & 62

(45, 46, 50, 57 & 59 handed)

4 bedroom detached

(Plot 31 end of terrace)

(Plot 59 semi-detached)

First Floor

Bedroom 1

3,585mm x 3,453mm 11'9" x 11'4"

Bedroom 2

3,349mm x 2,851mm 11'0" x 9'4"

Bedroom 3

3,083mm x 2,434mm 10'1" x 8'0"

Bedroom 4

2,933mm x 2,349mm 9'7" x 7'8"

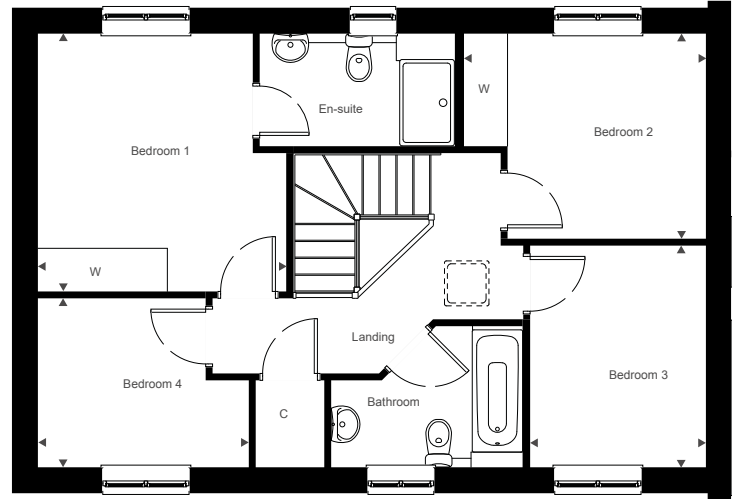
Ground Floor

Lounge

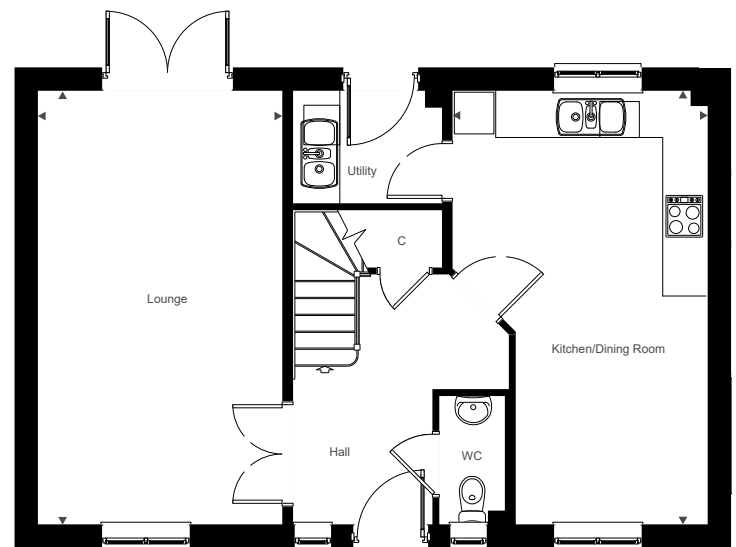
6,030mm x 3,400mm 19'9" x 11'2"

Kitchen/Dining Room

6,030mm x 3,520mm 19'9" x 11'8"



First Floor



Ground Floor



ANTLER HOMES

Details may vary from plot to plot. Dimensions are approximate and should not be used for furniture space, appliance space or carpet sizes. Please ask for details of your chosen plot. The contents of this document do not form or constitute a warranty or represent part of any contract. Please note: to increase legibility these plans have been sized to fit the page. As a result, each plan may be a different scale to others within this document. CGIs are for indicative purposes only and can be subject to change. AH289/June 2025.

REGAL CHASE

ALDERHOLT

The Dexter

Plot 35

4 bedroom link-detached



Computer generated image.



ANTLER HOMES

The Dexter

Plot 35

4 bedroom link-detached

First Floor

Bedroom 1

3,874mm x 3,485mm 12'9" x 11'6"

Bedroom 2

3,886mm x 3,413mm 12'9" x 11'2"

Bedroom 3

3,413mm x 2,753mm 11'2" x 9'0"

Bedroom 4

2,065mm x 1,959mm 6'9" x 6'5"

Ground Floor

Lounge

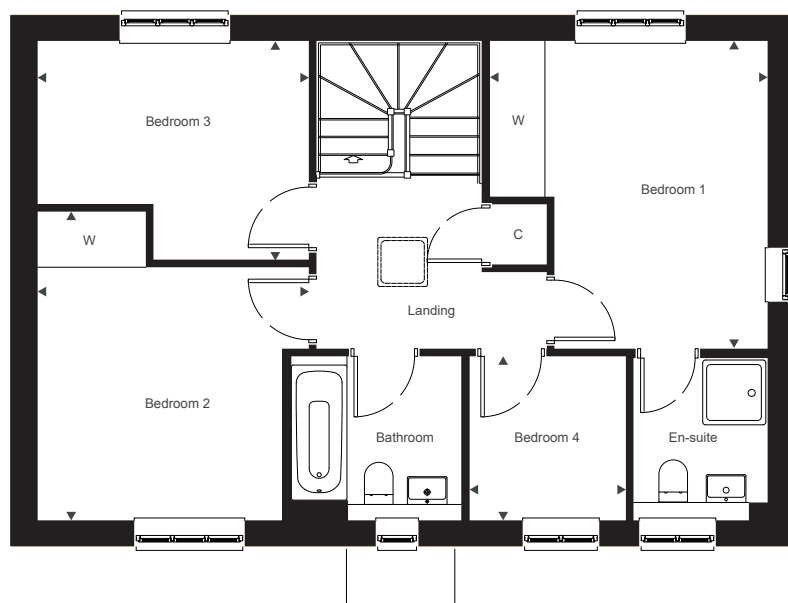
6,035mm x 3,449mm 19'10" x 11'4"

Kitchen

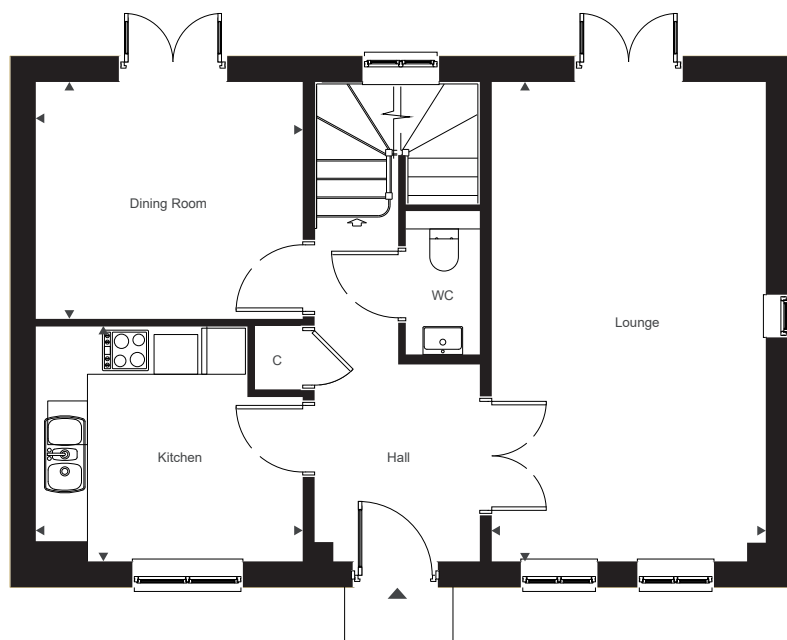
3,359mm x 2,957mm 11'0" x 9'8"

Dining Room

3,359mm x 2,982mm 11'0" x 9'9"



First Floor



Ground Floor



ANTLER HOMES

Details may vary from plot to plot. Dimensions are approximate and should not be used for furniture space, appliance space or carpet sizes. Please ask for details of your chosen plot. The contents of this document do not form or constitute a warranty or represent part of any contract. Please note: to increase legibility these plans have been sized to fit the page. As a result, each plan may be a different scale to others within this document. CGIs are for indicative purposes only and can be subject to change. AH289/June 2025.

REGAL CHASE

ALDERHOLT

The Kerry

Plots 36 (37 handed)

3 bedroom semi-detached



Computer generated image.



ANTLER HOMES

The Kerry

Plots 36 (37 handed)
3 bedroom semi-detached

First Floor

Bedroom 1
5,548mm x 2,881mm 18'2" x 9'5"

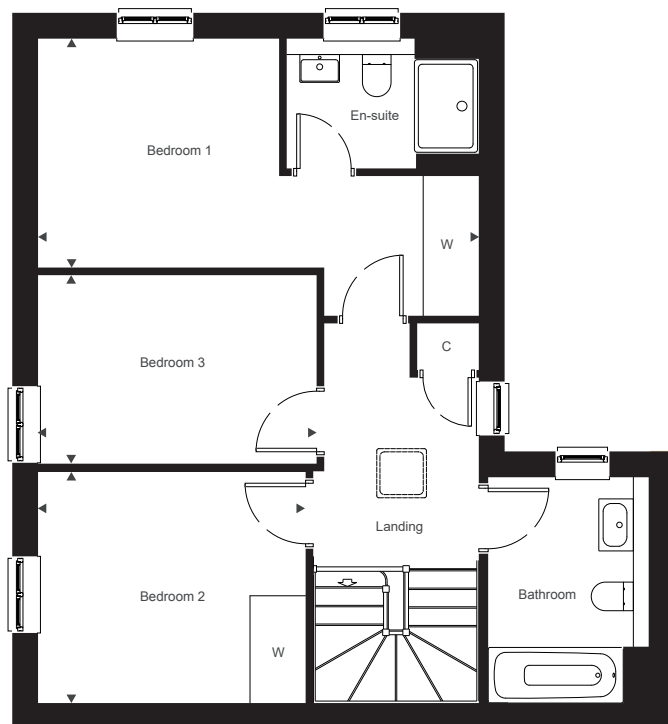
Bedroom 2
3,368mm x 2,908mm 11'1" x 9'6"

Bedroom 3
3,506mm x 2,373mm 11'6" x 7'9"

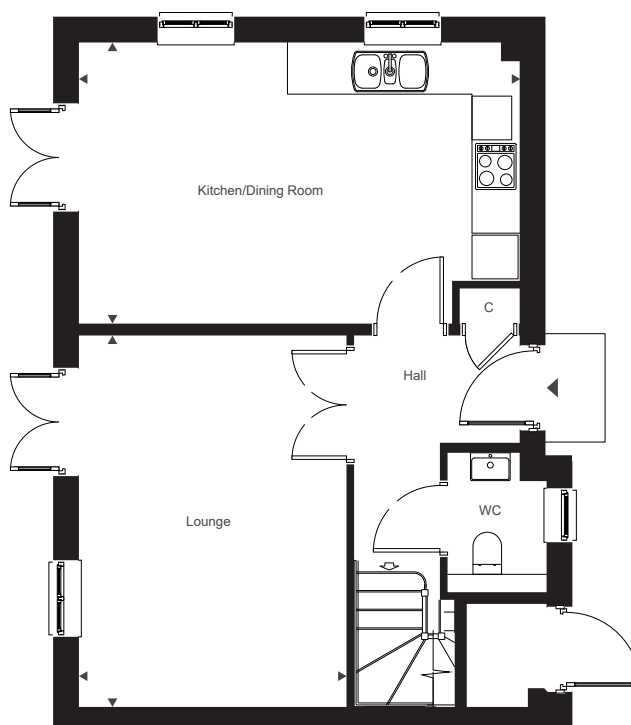
Ground Floor

Lounge
4,675mm x 3,368mm 15'4" x 11'1"

Kitchen/Dining Room
5,548mm x 3,538mm 18'2" x 11'7"



First Floor



Ground Floor



ANTLER HOMES

Details may vary from plot to plot. Dimensions are approximate and should not be used for furniture space, appliance space or carpet sizes. Please ask for details of your chosen plot. The contents of this document do not form or constitute a warranty or represent part of any contract. Please note: to increase legibility these plans have been sized to fit the page. As a result, each plan may be a different scale to others within this document. CGIs are for indicative purposes only and can be subject to change. AH289/June 2025.

REGAL CHASE

ALDERHOLT

The Highland

Plot 43

4 bedroom detached



Computer generated image.



ANTLER HOMES

The Highland

Plot 43

4 bedroom detached

Second Floor

Bedroom 1

3,831mm x 3,701mm 12'7" x 12'2"

Bedroom 2

3,920mm x 3,115mm 12'10" x 10'3"

Bedroom 3

3,251mm x 2,508mm 10'8" x 8'3"

First Floor

Lounge

7,042mm x 3,868mm 23'1" x 12'8"

Bedroom 4

3,289mm x 2,412mm 10'9" x 7'11"

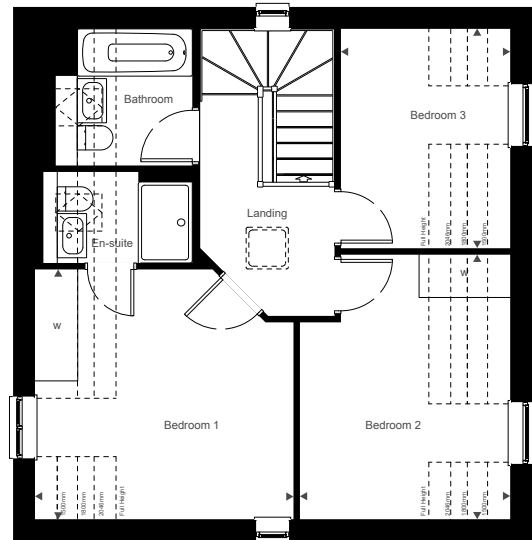
Ground Floor

Kitchen/Breakfast/Dining

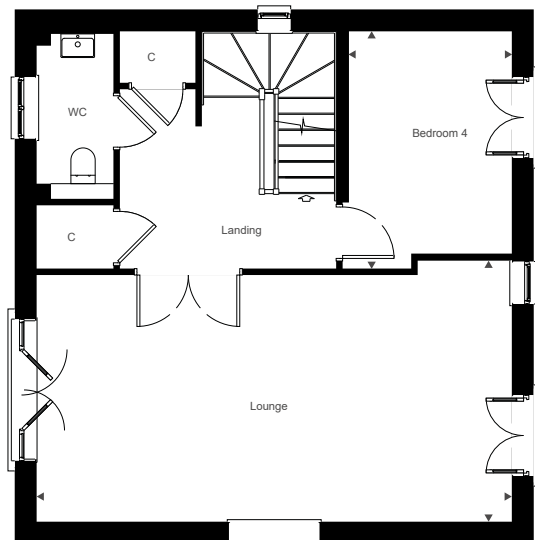
7,042mm x 5,474mm 23'1" x 18'0"

Study

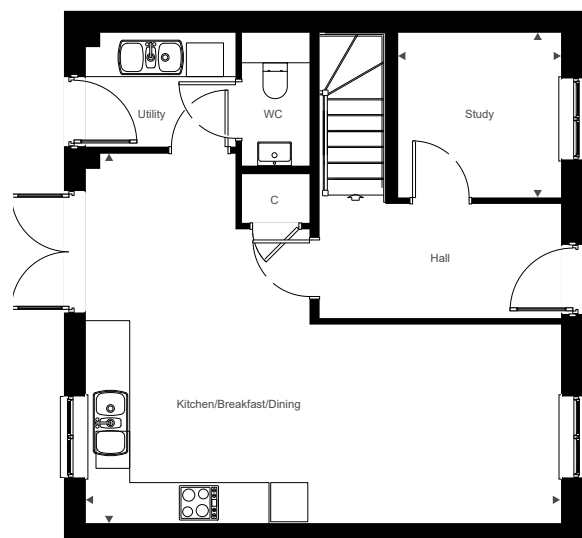
2,441mm x 2,414mm 8'0" x 7'11"



Second Floor



First Floor



Ground Floor

Details may vary from plot to plot. Dimensions are approximate and should not be used for furniture space, appliance space or carpet sizes. Please ask for details of your chosen plot. The contents of this document do not form or constitute a warranty or represent part of any contract. Please note: to increase legibility these plans have been sized to fit the page. As a result, each plan may be a different scale to others within this document. CGIs are for indicative purposes only and can be subject to change. AH289/June 2025.



ANTLER HOMES

REGAL CHASE

ALDERHOLT

The Cranborne

Plot 44

4 bedroom semi-detached



Computer generated image.



ANTLER HOMES

The Cranborne

Plot 44

4 bedroom semi-detached

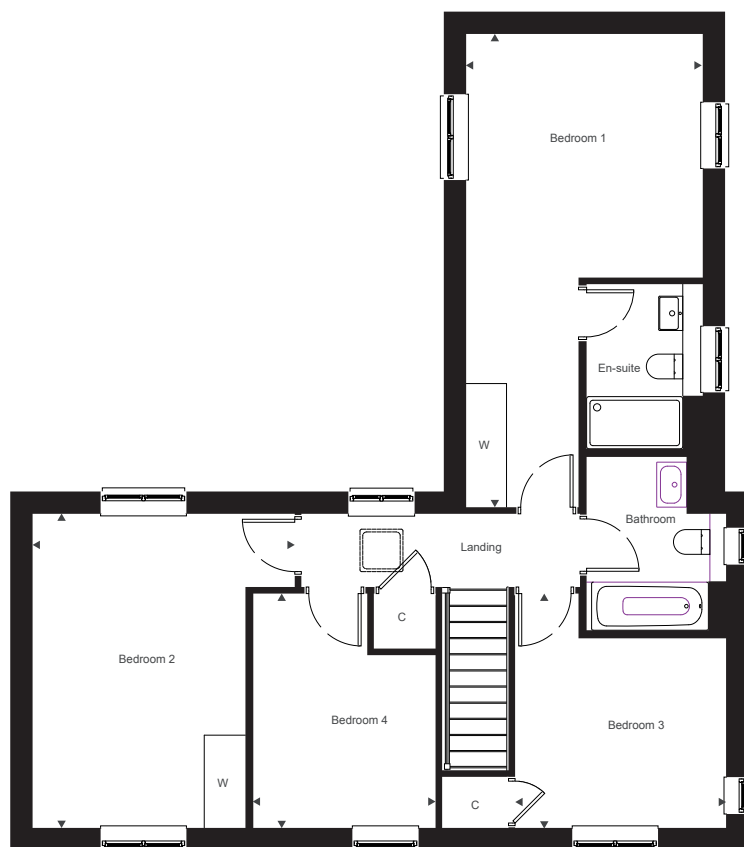
First Floor

Bedroom 1
6,890mm x 3,445mm 22'7" x 11'4"

Bedroom 2
4,573mm x 3,817mm 15'0" x 12'6"

Bedroom 3
3,412mm x 3,071mm 11'2" x 10'1"

Bedroom 4
3,412mm x 2,711mm 11'2" x 8'8"



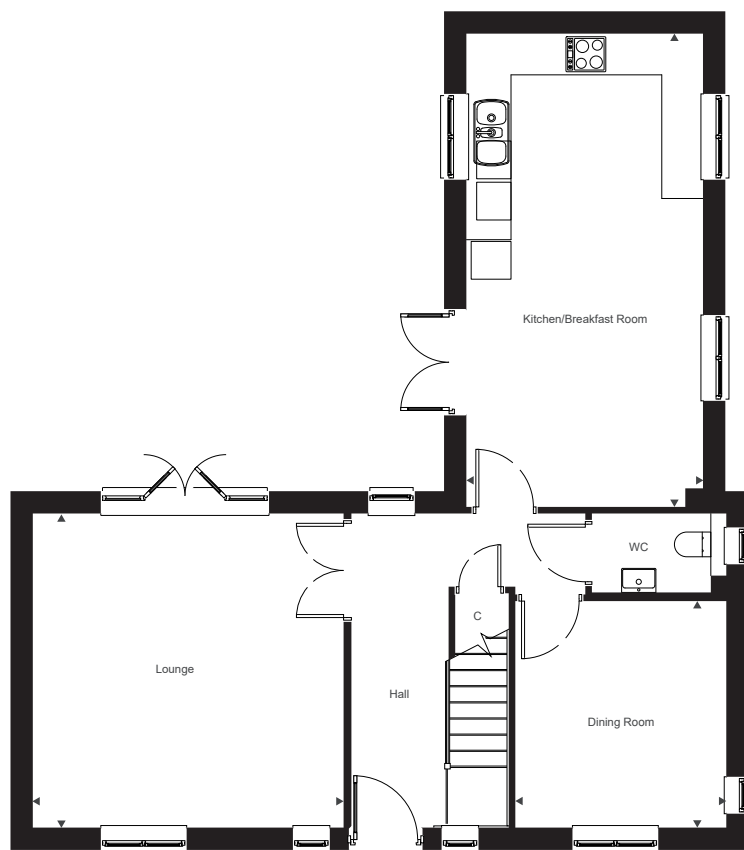
First Floor

Ground Floor

Lounge
4,573mm x 4,533mm 15'0" x 14'10"

Dining Room
3,298mm x 3,071mm 10'10" x 10'1"

Kitchen/Breakfast Room
6,880mm x 3,445mm 22'7" x 11'4"



Ground Floor



ANTLER HOMES

Details may vary from plot to plot. Dimensions are approximate and should not be used for furniture space, appliance space or carpet sizes. Please ask for details of your chosen plot. The contents of this document do not form or constitute a warranty or represent part of any contract. Please note: to increase legibility these plans have been sized to fit the page. As a result, each plan may be a different scale to others within this document. CGIs are for indicative purposes only and can be subject to change. AH289/June 2025.

REGAL CHASE

ALDERHOLT

The Dorchester

Plot 51

2 bedroom coach house



Computer generated image.



ANTLER HOMES

The Dorchester

Plot 51

2 bedroom coach house

First Floor

Lounge/Kitchen/Dining

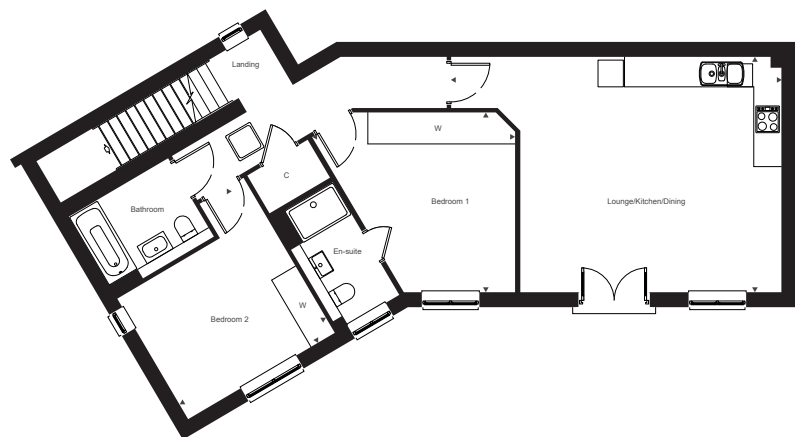
7,167mm x 5,107mm 23'6" x 16'9"

Bedroom 1

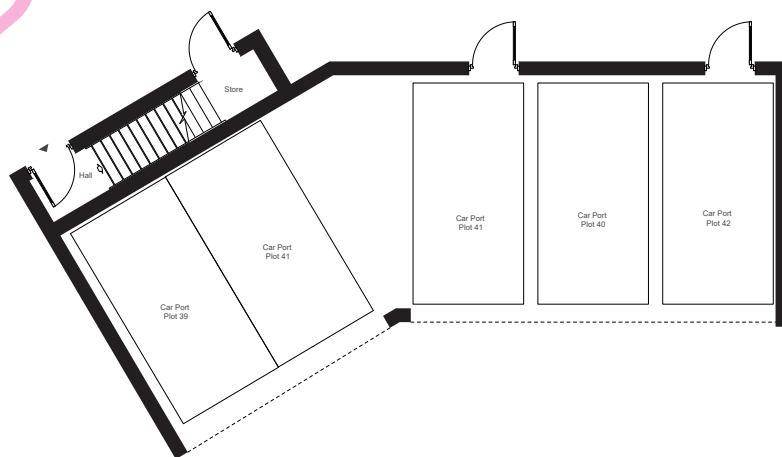
4,404mm x 3,901mm 14'5" x 12'10"

Bedroom 2

3,903mm x 3,693mm 12'10" x 12'1"



First Floor



Ground Floor



ANTLER HOMES

Details may vary from plot to plot. Dimensions are approximate and should not be used for furniture space, appliance space or carpet sizes. Please ask for details of your chosen plot. The contents of this document do not form or constitute a warranty or represent part of any contract. Please note: to increase legibility these plans have been sized to fit the page. As a result, each plan may be a different scale to others within this document. CGIs are for indicative purposes only and can be subject to change. AH289/June 2025.

REGAL CHASE

ALDERHOLT

The Purbeck

Plot 52

2 bedroom coach house



Computer generated image.



ANTLER HOMES

The Purbeck

Plot 52

2 bedroom coach house

First Floor

Lounge/Kitchen/Dining

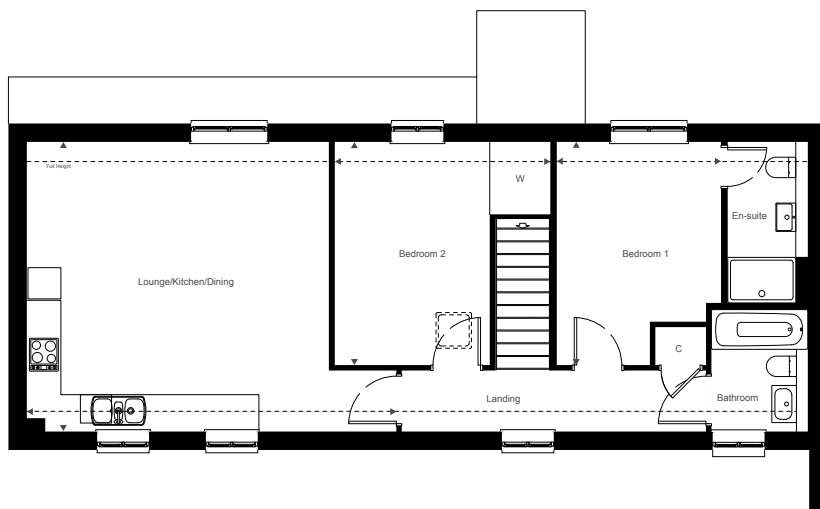
6,515mm x 5,107mm 21'5" x 16'9"

Bedroom 1

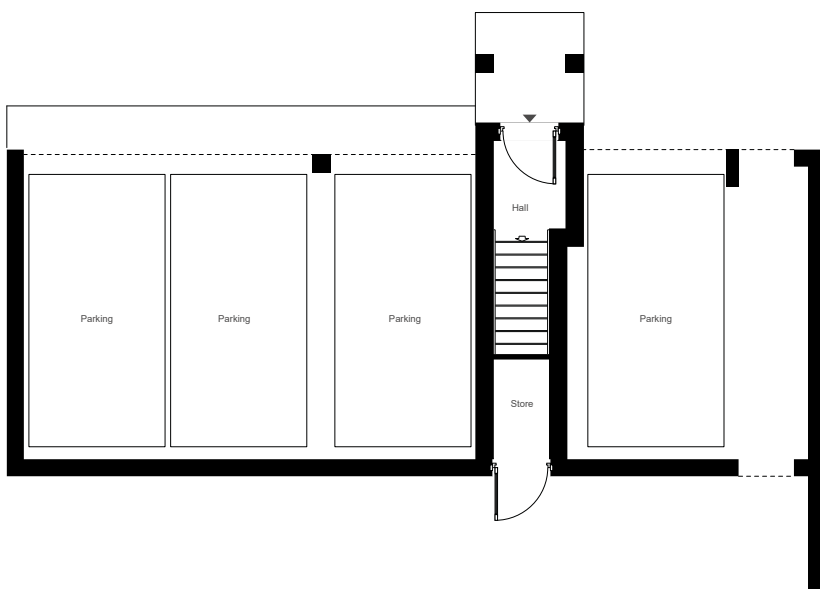
3,935mm x 2,743mm 12'11" x 9'6"

Bedroom 2

3,935mm x 2,733mm 12'11" x 9'0"



First Floor



Ground Floor



ANTLER HOMES

Details may vary from plot to plot. Dimensions are approximate and should not be used for furniture space, appliance space or carpet sizes. Please ask for details of your chosen plot. The contents of this document do not form or constitute a warranty or represent part of any contract. Please note: to increase legibility these plans have been sized to fit the page. As a result, each plan may be a different scale to others within this document. CGIs are for indicative purposes only and can be subject to change. AH289/June 2025.

REGAL CHASE

ALDERHOLT

The Weymouth

Plots 53, 54 & 55
4 bedroom terraced



Computer generated image.



ANTLER HOMES

The Weymouth

Plots 53, 54 & 55

4 bedroom terraced

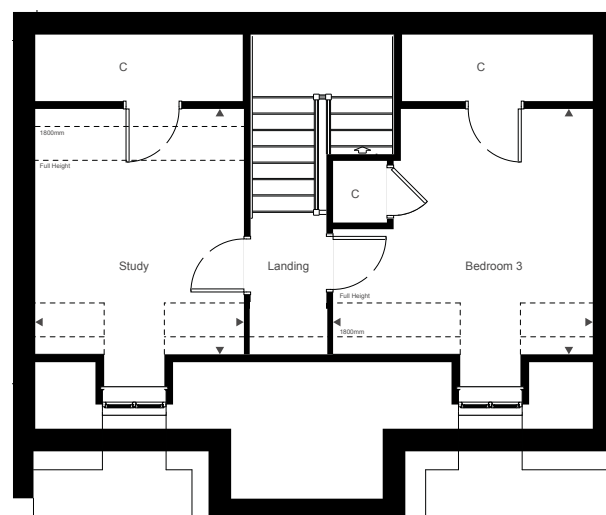
Second Floor

Bedroom 3

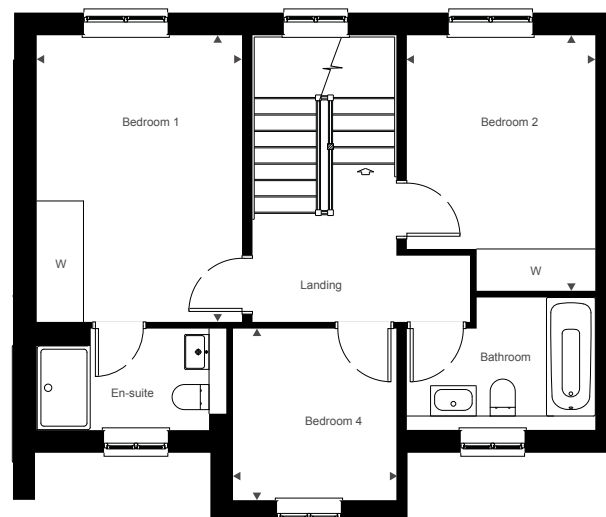
3,732mm x 3,526mm 12'3" x 11'7"

Study

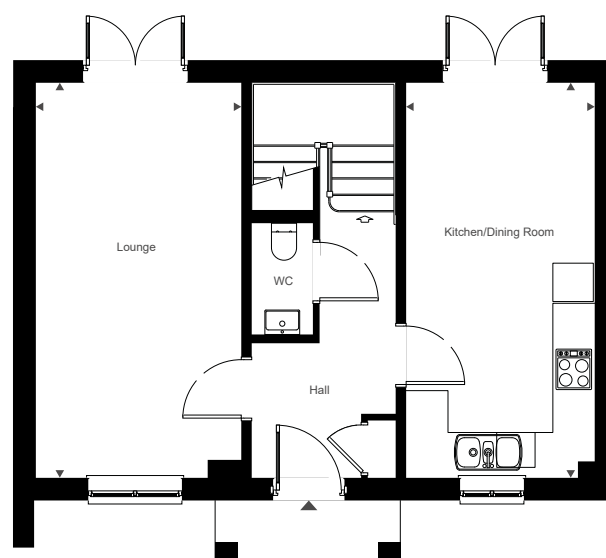
3,526mm x 2,999mm 11'7" x 9'10"



Second Floor



First Floor



Ground Floor

Details may vary from plot to plot. Dimensions are approximate and should not be used for furniture space, appliance space or carpet sizes. Please ask for details of your chosen plot. The contents of this document do not form or constitute a warranty or represent part of any contract. Please note: to increase legibility these plans have been sized to fit the page. As a result, each plan may be a different scale to others within this document. CGIs are for indicative purposes only and can be subject to change. AH289/June 2025.



ANTLER HOMES

REGAL CHASE

ALDERHOLT

The Milcombe

Plots 58 & 60

3 bedroom semi-detached and detached



Computer generated image.



ANTLER HOMES

The Milcombe

Plots 58 & 60

3 bedroom

(Plot 58 semi-detached)

(Plot 60 detached)

First Floor

Bedroom 1

4,559mm x 3,606mm 14'11" x 11'10"

Bedroom 2

3,606mm x 3,559mm 11'10" x 11'8"

Bedroom 3

2,410mm x 2,373mm 7'11" x 7'9"

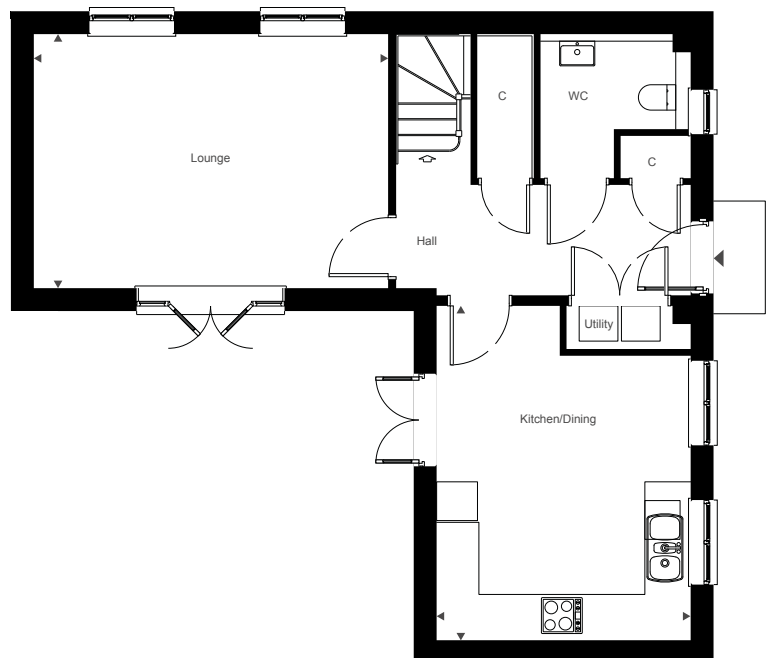
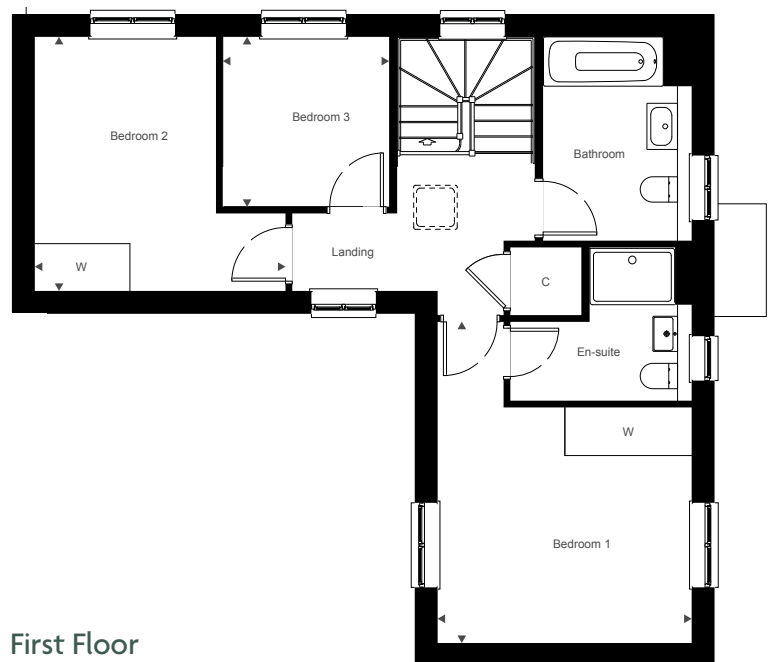
Ground Floor

Lounge

5,038mm x 3,606mm 16'6" x 11'10"

Kitchen/Dining

4,746mm x 3,606mm 15'7" x 11'10"



ANTLER HOMES

Details may vary from plot to plot. Dimensions are approximate and should not be used for furniture space, appliance space or carpet sizes. Please ask for details of your chosen plot. The contents of this document do not form or constitute a warranty or represent part of any contract. Please note: to increase legibility these plans have been sized to fit the page. As a result, each plan may be a different scale to others within this document. CGIs are for indicative purposes only and can be subject to change. AH289/June 2025.

REGAL CHASE

ALDERHOLT

The Lyme

Plots 47, 48, 49, 64, & 67 (38, 65 & 66 handed)

2 bedroom terraced



Computer generated image.



ANTLER HOMES

The Lyme

Plots 47, 48, 49, 64, & 67

(38, 65 & 66 handed)

2 bedroom terraced

First Floor

Bedroom 1

4,013mm x 3,140mm 11'2" x 10'3"

Bedroom 2

3,476mm x 2,630mm 10'3" x 8'8"

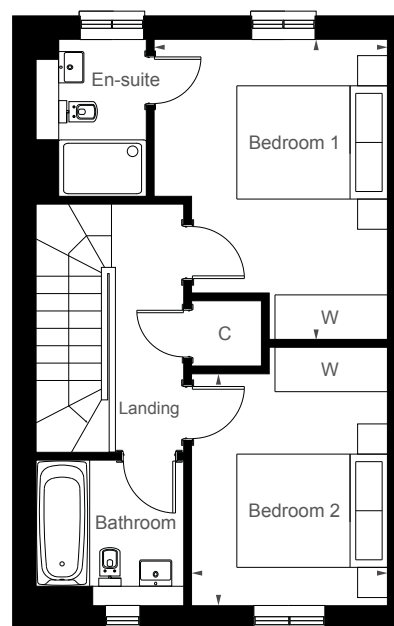
Ground Floor

Lounge/Dining

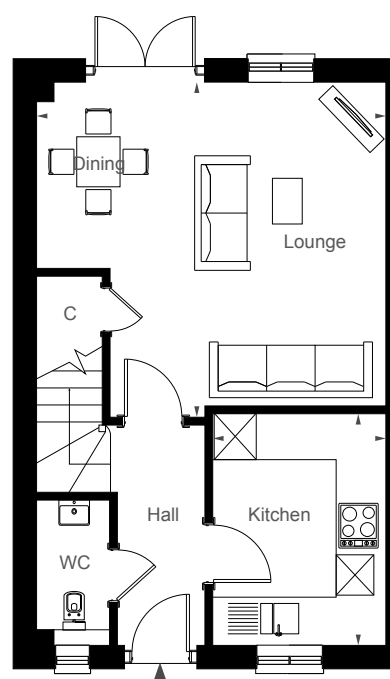
4,700mm x 4,530mm 15'5" x 14'10"

Kitchen

3,110mm x 2,330mm 10'3" x 7'8"



First Floor



Ground Floor



ANTLER HOMES

Details may vary from plot to plot. Dimensions are approximate and should not be used for furniture space, appliance space or carpet sizes. Please ask for details of your chosen plot. The contents of this document do not form or constitute a warranty or represent part of any contract. Please note: to increase legibility these plans have been sized to fit the page. As a result, each plan may be a different scale to others within this document. CGIs are for indicative purposes only and can be subject to change. AH289/June 2025.

REGAL CHASE

ALDERHOLT

The Longhorns

Plots 69 & 71 (68 & 70 handed)

1 bedroom apartment



Computer generated image.



ANTLER HOMES

The Longhorns

Plots 69 & 71

(68 & 70 handed)

1 bedroom apartment

First Floor (plots 70 & 71)

Kitchen/Dining/Lounge

6,780mm x 4,200mm 22'3" x 13'9"

Bedroom

4,610mm x 2,800mm 15'2" x 9'2"

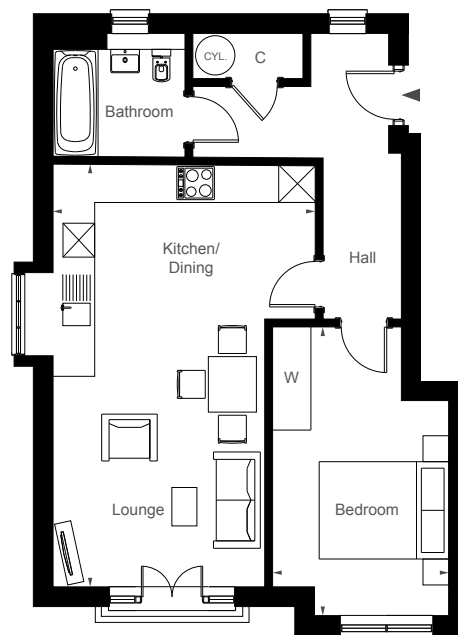
Ground Floor (plots 68 & 69)

Kitchen/Dining/Lounge

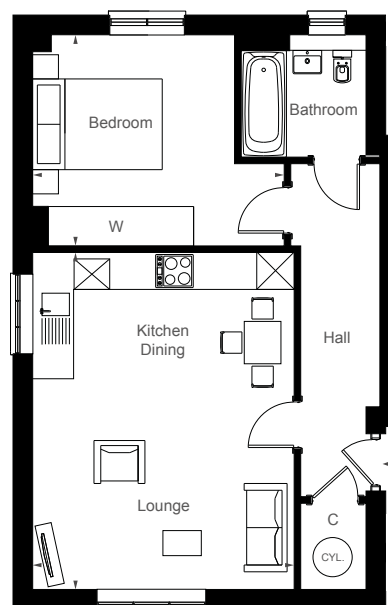
5,390mm x 4,200mm 17'8" x 13'9"

Bedroom

4,050mm x 3,380mm 11'1" x 13'3"



First Floor (plots 70 & 71)



Ground Floor (plots 68 & 69)



ANTLER HOMES

Details may vary from plot to plot. Dimensions are approximate and should not be used for furniture space, appliance space or carpet sizes. Please ask for details of your chosen plot. The contents of this document do not form or constitute a warranty or represent part of any contract. Please note: to increase legibility these plans have been sized to fit the page. As a result, each plan may be a different scale to others within this document. CGIs are for indicative purposes only and can be subject to change. AH289/June 2025.

REGAL CHASE

ALDERHOLT

The Hereford

Plot 63

2 bedroom terraced



Computer generated image.



ANTLER HOMES

The Hereford

Plot 63

2 bedroom terraced

First Floor

Master Bedroom

3,591mm x 2,634mm 11'2" x 10'3"

Bedroom 2

3,899mm x 3,143mm 10'3" x 8'8"

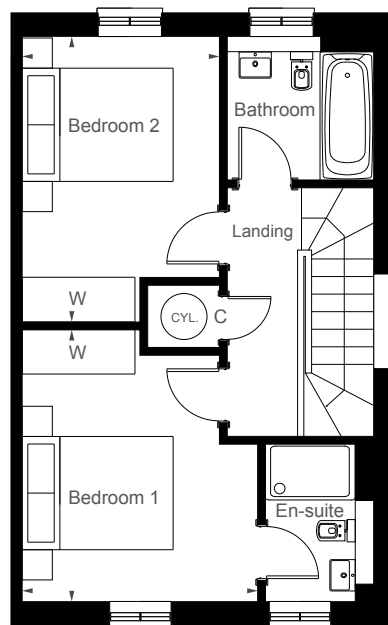
Ground Floor

Lounge/Dining

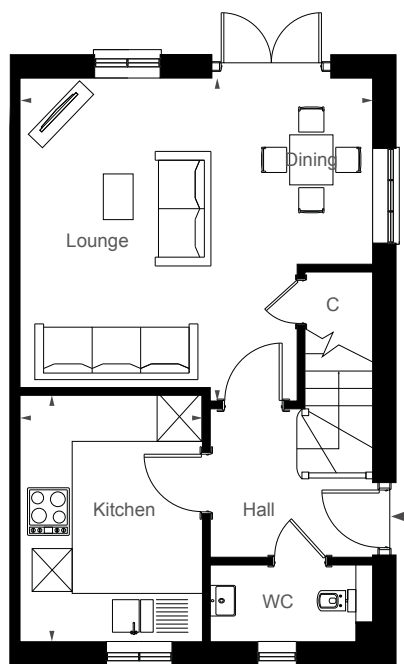
4,700mm x 4,365mm 15'5" x 14'10"

Kitchen

3,329mm x 2,425mm 10'3" x 7'8"



First Floor



Ground Floor



ANTLER HOMES

Details may vary from plot to plot. Dimensions are approximate and should not be used for furniture space, appliance space or carpet sizes. Please ask for details of your chosen plot. The contents of this document do not form or constitute a warranty or represent part of any contract. Please note: to increase legibility these plans have been sized to fit the page. As a result, each plan may be a different scale to others within this document. CGIs are for indicative purposes only and can be subject to change. AH289/June 2025.