



5 Holters Mews, Ivy Lane, Canterbury, Kent, CT1 1WA

£1,000 PCM

- STUDENT FLAT
- DOUBLE BEDS
- 1 BATHROOMS
- WHITE GOODS INCLUDED
- FURNISHED PROPERTY
- 1 BEDROOMS
- 1 RECEPTION ROOMS
- COURTYARD GARDEN
- COUPLES WELCOME

5 Holters Mews, Canterbury CT1 1WA

A tranquil and bright 1-bedroom student flat, tucked away in a quiet mews-style location. Ideally suited for a final-year student or a couple, this property is just a 2-minute walk from the CCCU Union and the city centre. Featuring a separate lounge, double bedroom, and optional bills-inclusive packages

The Space Ivy Lane is a rare find in the Canterbury student market. If you are looking for a property that feels like a genuine home rather than just a room, this is it. This light, airy, and fully furnished flat is located in a quiet, tucked-away spot, offering the peace and quiet needed for high-level study while keeping you right in the heart of the city.

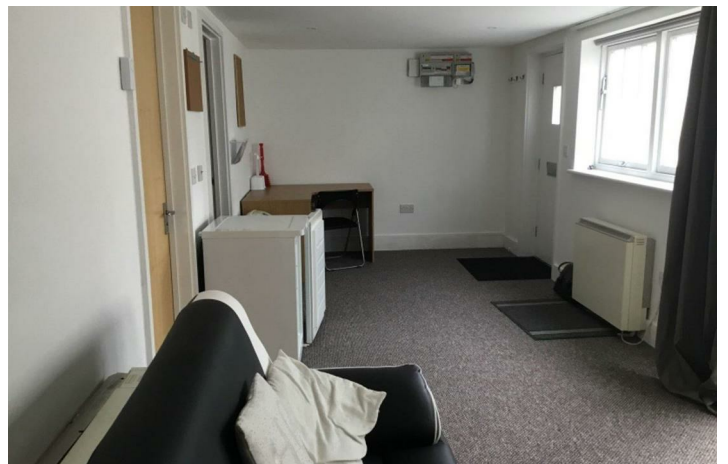
The property boasts a separate, comfortable lounge area, a modern kitchen, and a spacious double bedroom. Large windows throughout ensure the flat is flooded with natural light, creating a fresh and inviting atmosphere for the upcoming academic year.

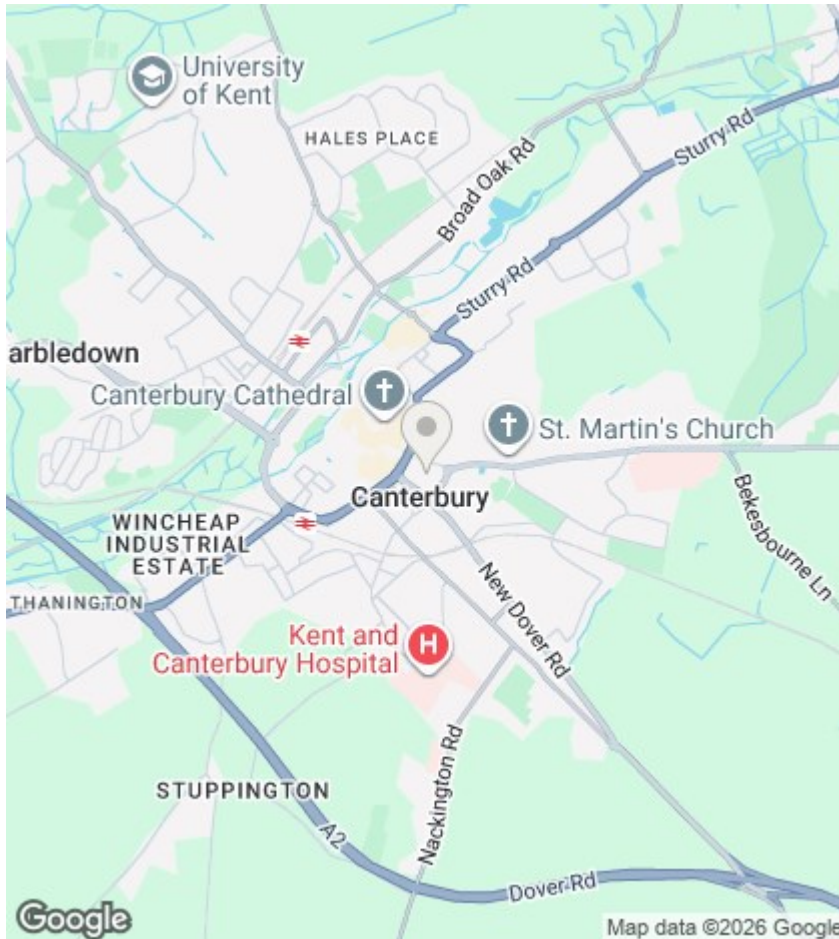
The Location (CT1) At Ivy Lane, you are perfectly positioned to enjoy the best of Canterbury without the noise:

University Life: You are literally a 2-minute walk from Canterbury Christ Church University (CCCU). You can be at your lectures or the Student Union in seconds.



Council Tax Band: A





Directions

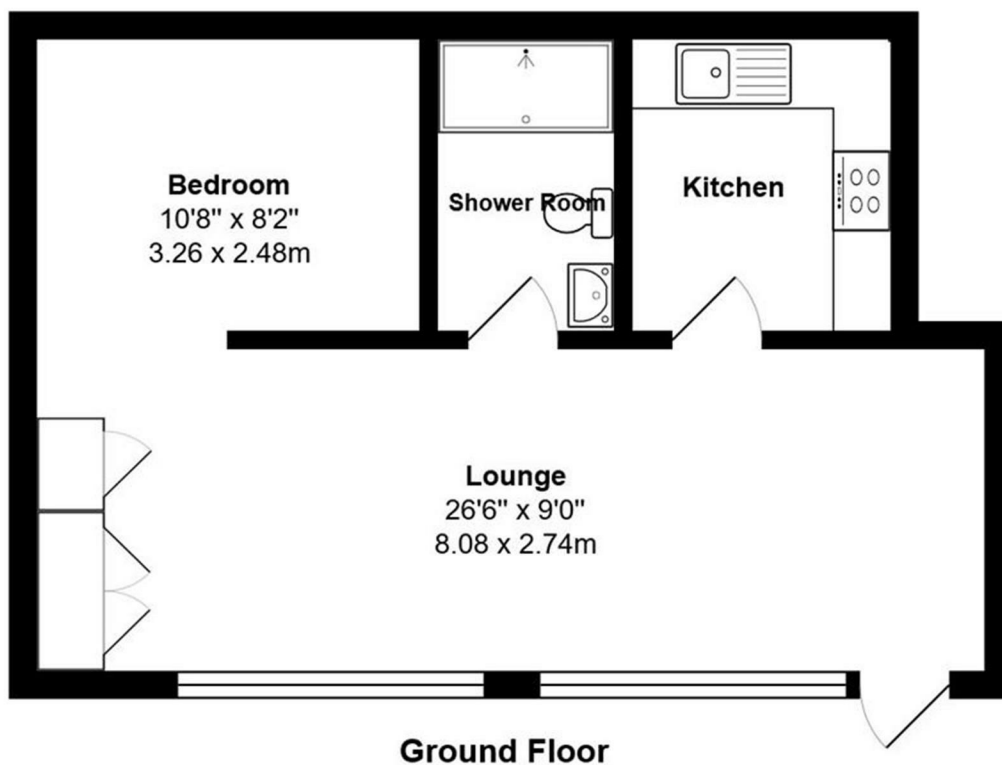
Viewings

Viewings by arrangement only. Call 01227788088 to make an appointment.

EPC Rating:

D

Energy Efficiency Rating		
	Current	Potential
Very energy efficient - lower running costs		
(92 plus) A		
(81-91) B		
(69-80) C		
(55-68) D	63	71
(39-54) E		
(21-38) F		
(1-20) G		
Not energy efficient - higher running costs		
England & Wales	EU Directive 2002/91/EC	



Total Area: 445 ft² ... 41.4 m²

All measurements are approximate and for display purposes only