



Bridlington Links, Sewerby, Bridlington, YO15 1DW

- Holiday Lodge
- Open Plan Kitchen/Lounge & Separate Utility Room
- Beautifully Presented
- Located On The Highly Desirable Bridlington Links Golf Course
- Two Double Bedrooms
- Two Bedrooms
- Decking To The Front

Asking Price £130,000



Woody, Bridlington Links, Sewerby, Bridlington, YO15 1DW

DESCRIPTION

Positioned within an exclusive and highly regarded holiday park on the fringes of the desirable coastal village of Flamborough, this exceptional two-bedroom lodge offers an enviable lifestyle opportunity combining luxury, tranquillity, and coastal charm. Ideally suited as a refined holiday retreat or a premium investment purchase, the property enjoys a peaceful setting surrounded by the beauty of the East Yorkshire coastline.

Beautifully appointed throughout, the lodge features a stunning open-plan lounge, kitchen and dining space, thoughtfully designed to provide an elegant yet welcoming environment for both relaxation and entertaining. The contemporary interior is enhanced by an abundance of natural light, with large windows creating a bright and airy atmosphere while perfectly framing the surrounding setting.

The accommodation further comprises two spacious double bedrooms, including an impressive principal suite with stylish ensuite facilities, together with a separate modern bathroom finished to a high standard.

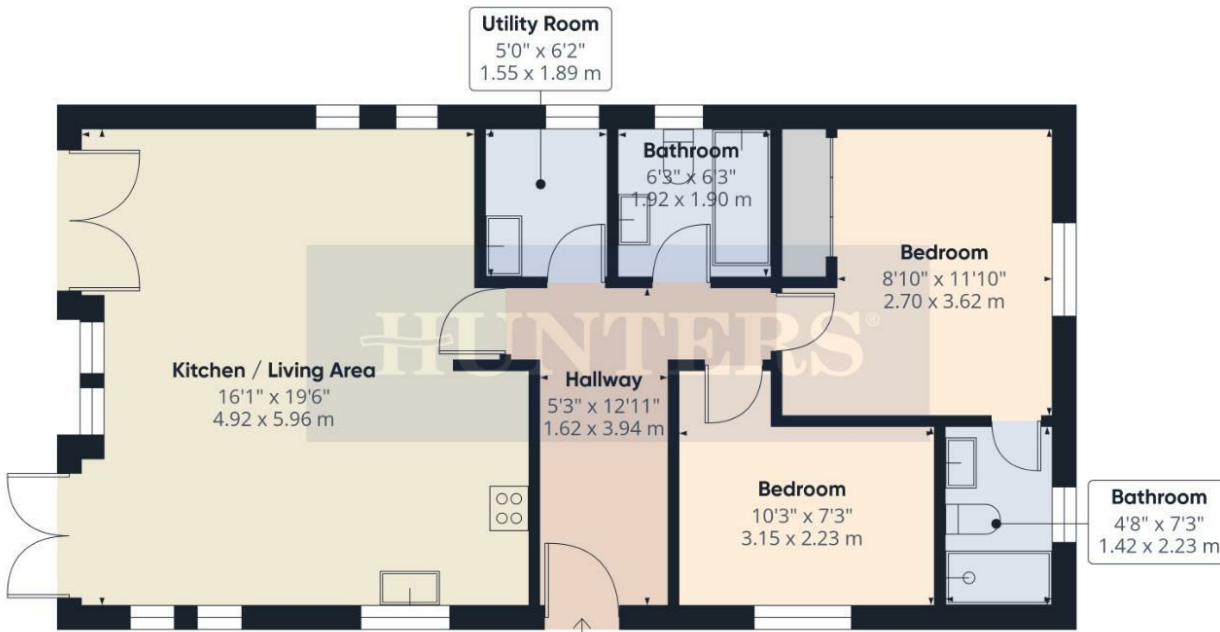
Externally, the property boasts an expansive decking area, offering the perfect space for al fresco dining, morning coffee, or simply unwinding in peaceful surroundings.

Flamborough is renowned for its dramatic coastline, picturesque walking trails, and charming village atmosphere, offering an exceptional blend of countryside and seaside living. A selection of independent shops, cafés, and traditional public houses can be found nearby, while excellent transport connections provide convenient access to surrounding coastal destinations and attractions.

Residents may also enjoy access to a range of quality on-site facilities, further enhancing the exclusivity and appeal of this superb lodge. Offering an outstanding combination of luxury accommodation and an idyllic coastal setting, this is a rare opportunity to acquire a truly impressive holiday home in one of the region's most sought-after locations.







Approximate total area⁽¹⁾
739 ft²
68.7 m²

(1) Excluding balconies and terraces

Calculations reference the RICS IPMS 3C standard. Measurements are approximate and not to scale. This floor plan is intended for illustration only.

GIRAFFE360



ENERGY PERFORMANCE CERTIFICATE

The energy efficiency rating is a measure of the overall efficacy of a home. The higher the rating the more energy efficient the home is and the lower the fuel bills will be.

Energy Efficiency Rating		Current	Potential
Very energy efficient - lower running costs			
(92 plus) A			
(81-91) B			
(69-80) C			
(55-68) D			
(39-54) E			
(21-38) F			
(1-20) G			
Not energy efficient - higher running costs			
England & Wales	EU Directive 2002/91/EC		

These particulars are intended to give a fair and reliable description of the property but no responsibility for any inaccuracy or error can be accepted and do not constitute an offer or contract. We have not tested any services or appliances (including central heating if fitted) referred to in these particulars and the purchasers are advised to satisfy themselves as to the working order and condition. If a property is unoccupied at any time there may be reconnection charges for any switched off/disconnected or drained services or appliances - All measurements are approximate.

THINKING OF SELLING? If you are thinking of selling your home or just curious to discover the value of your property, Hunters would be pleased to provide free, no obligation sales and marketing advice. Even if your home is outside the area covered by our local offices we can arrange a Market Appraisal through our national network of Hunters estate agents.

Viewings

Please contact bridlington@hunters.com, if you wish to arrange a viewing appointment for this property or require further information.

Valuations

For a valuation of your property, please email the team with your property details, contact information and the times you are available.