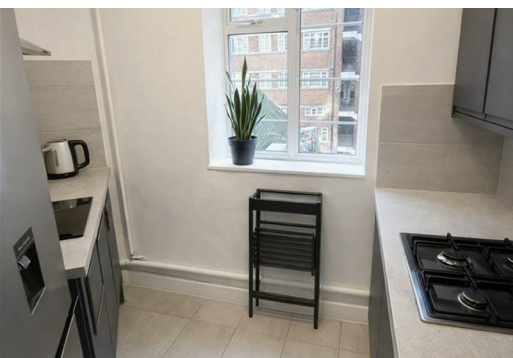


TATES

020 7602 6020



Edith Villas, London W14 9AA

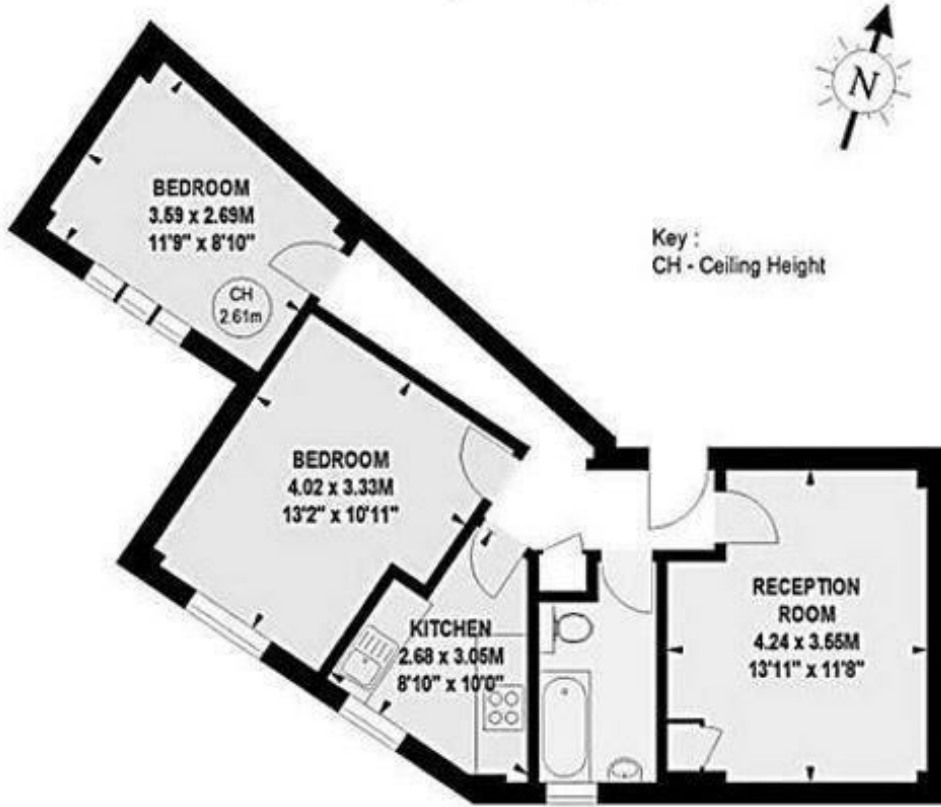
£450,000

- Two Double Bedrooms
- 24H Porter
- Moments away from West Kensington Station
- Heating and hot water included in the service charges
- Wooden Flooring
- Lift
- Share of Freehold

West Kensington Court, W14

Approximate gross internal area

56.11 sq m / 604 sq ft



First Floor

Whilst these particulars are produced in good faith and are believed to be correct, no guarantee is given, nor any responsibility accepted, by Tates nor by any of its representatives, for their accuracy. The particulars do not constitute part of any offer or contract, and it is recommended that such things as measurements, condition, structure, services, appliances, fixtures and fittings and facilities are all independently assessed by the prospective purchaser or renter of the subject property prior to committing to any contract.

Energy Efficiency Rating		
	Current	Potential
Very energy efficient - lower running costs		
(92 plus) A		
(81-91) B		
(69-80) C		78
(55-68) D	67	
(39-54) E		
(21-38) F		
(1-20) G		
Not energy efficient - higher running costs		
England & Wales		EU Directive 2002/91/EC

135 Hammersmith Road, West Kensington, London W14 0QL

mail@tatesestates.co.uk

tatesestates.co.uk

Tates (Agents) Ltd. Registered in England and Wales No. 02356337

Registered Office: Imperial House, 8 Keane Street, London WC2B 4AS

