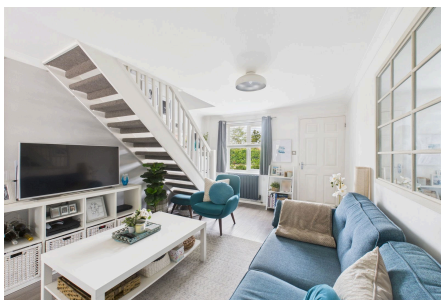


Castlewood Road, Southwater

Offers Over £300,000

2 1 1



An impressive and Beautifully Presented Home located in a Popular Village, boasting Off Street Parking for two cars, a Luxurious Bathroom, stylish Kitchen and close to Southwater Country Park.

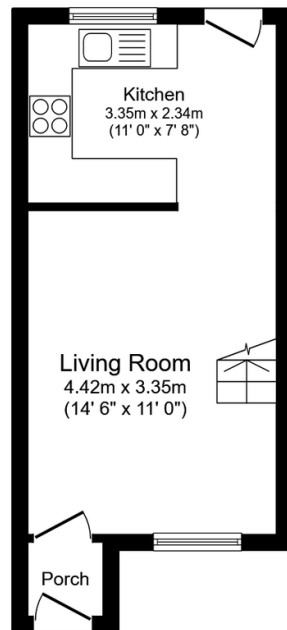
Tenure: Freehold

Council Tax: Band C

EPC Rating: Current C - Potential B

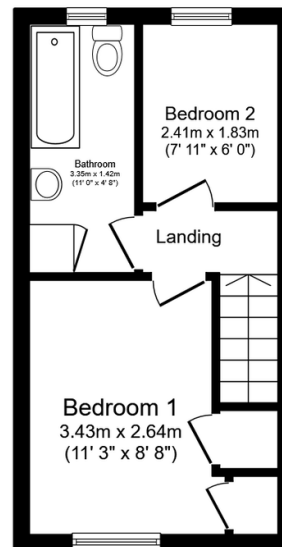
Key Features

- Watch Our Video Tour
- Open Plan 16ft Living Room
- Two Bedrooms
- Beautiful Rear Garden
- Ideal First Time Purchase
- Refitted 11ft Kitchen
- Luxurious Family Bathroom
- Off Street Parking For 2 Cars
- Popular Village Location
- Beautifully Presented Throughout



Ground Floor

Floor area 24.2 sq.m. (260 sq.ft.)



First Floor

Floor area 23.1 sq.m. (248 sq.ft.)

Total floor area: 47.2 sq.m. (509 sq.ft.)

This floor plan is for illustrative purposes only. It is not drawn to scale. Any measurements, floor areas (including any total floor area), openings and orientations are approximate. No details are guaranteed, they cannot be relied upon for any purpose and do not form any part of any agreement. No liability is taken for any error, omission or misstatement. A party must rely upon its own inspection(s). Powered by www.Propertybox.io