



Edinburgh Drive, Walsall, WS4 1HW

Offers In Region Of £375,000

3 2 2



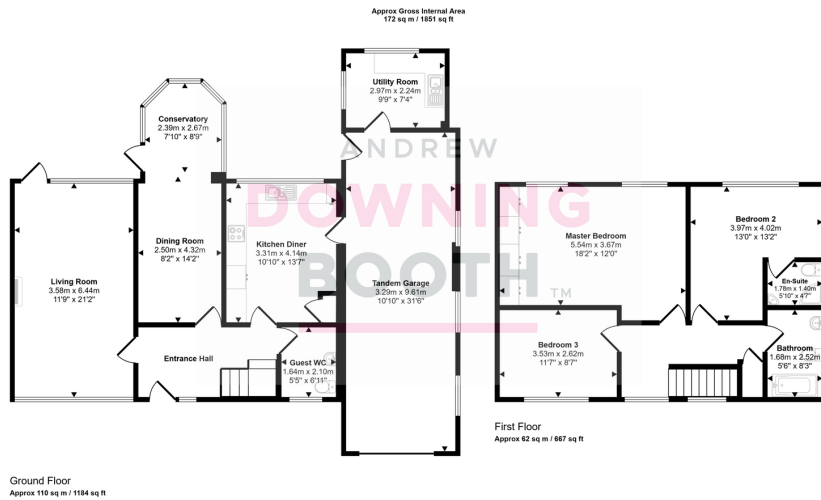
The garden of your dreams! This is a far larger than average three bedroom detached home, sitting in an incredible and large mature plot, that is sure to impress!

This property offers convenient access to local amenities and a well-regarded neighbourhood. Residents can enjoy proximity to shops, services, and green spaces, making it an attractive location for various lifestyles. Excellent transport links provide straightforward routes to Walsall town centre and surrounding areas, ensuring ease of travel for commuters.

The accommodation is thoughtfully laid out, beginning with a spacious through entrance hall with a guest WC. There is also a bright, dual-aspect living room and a separate dining room that flows into a delightful conservatory, offering versatile reception spaces. A modern kitchen/diner and a practical utility room complete the ground floor. Upstairs, three well-proportioned double bedrooms await, including a master bedroom, a second bedroom with an en-suite shower room, and a contemporary family bathroom. Externally, the property boasts an impressive plot with ample off-street parking, a double-length tandem garage, and a substantial, enclosed rear garden with lawn, paved patio and mature shrub and tree borders.

An internal viewing is essential to fully appreciate the space, impressive plot, and appealing location of this inviting home.





This floorplan is only for illustrative purposes and is not to scale. Measurements of rooms, doors, windows, and any items are approximate and no responsibility is taken for any error, omission or misstatement. Some of items such as bathroom suites are representations only and may not look like the real items. Made with Made (Sleepy) 360.

- Three Double Bedroom
- Kitchen Diner & Utility Room
- Bathroom, En-Suite & Guest WC
- Sitting In A Large Plot With Ample Parking & Tandem Garage
- Large Dual Aspect Living Room & Separate Dining Room With Conservatory Off
- Popular Location

